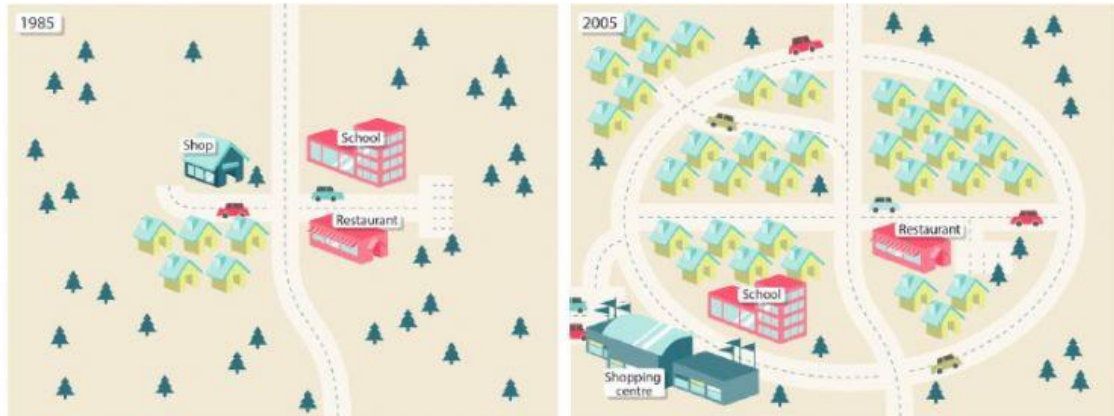


Exercise 4

Read the report again, this time looking at the words and phrases in bold. Then answer the questions.



The two maps show the layout of Green Village in different years. **The first one shows the village in 1985** and the second shows how it looked in 2005. Overall, **it can be seen** that the village has been extended and enlarged in almost all areas.

To begin, the biggest change is that a new road was built around the village. As a result, the village has had several new developments: new houses were built both in the centre and out of the village. **In addition to these, a new shopping centre was built on the southern edge of the village. As result of this, we can see that the small shop in the middle of the village disappeared.** However, the restaurant remained in the same location in the centre of the village. Although the school is still in the centre, it was moved from the north to the south of the village.

1. *The first one shows the village in 1985 ...*

In this sentence, *one* refers to the first map/ the first difference/ the first year .

2. *... it can be seen.*

Here, *it* refers to the maps/ the village/ we (can see) .

3. *In addition to these, a new shopping centre was built on the southern edge of the village.*

In this sentence, *these* refers to new developments/ new shops/ new houses.

4. *As a result of this, we can see that the small shop in the middle of the village disappeared.*

In this sentence, *this* refers to the increase in the number of houses/ the new road/ the new shopping centre