

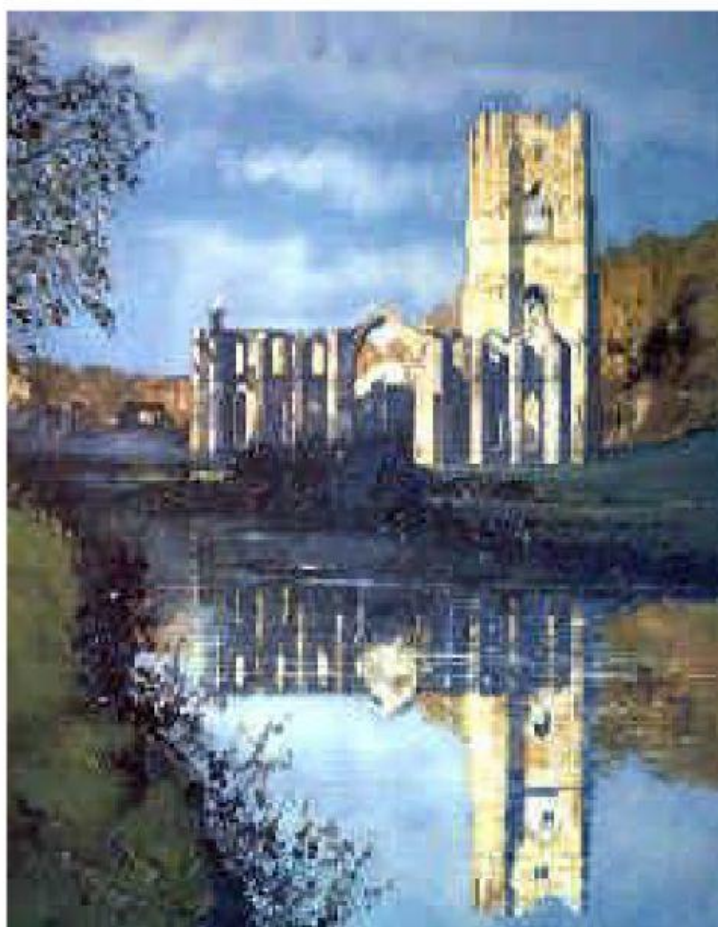
1 Read the text and fill in the missing prepositions

Fountains Abbey

There has long been a tradition of monasticism _____ the North of England, especially in Yorkshire where abbeys were established as early as the 7th century.

Perhaps the most impressive of these abbeys is Fountains Abbey, famous _____ its great setting and extensive ruins. Fountains Abbey lies _____ the valley of the River Skell. The Abbey, Britain's largest monastic ruin, was founded _____ 1132 by thirteen Benedictine monks from St Mary's Abbey in York. The abbey was named Fountains Abbey _____ the springs of water that existed in the area.

Fountains Abbey was very rich and prosperous, and owned vast areas of land across western Yorkshire. Much of its wealth was also based _____ the trading of wool and lead.



However, the history of the Abbey was not uneventful. William Thirsk, abbot of Fountains from 1526-1536, was executed _____ King Henry. The Abbey buildings and over 500 acres of land were sold _____ Sir Richard Gresham, a merchant. Finally, it was sold to Sir Stephen Proctor who built Fountains Hall in 1611. This mansion was built partly with stone from the Abbey ruins. Today there are two rooms open to the public.

Fountains Abbey is one of the most visited properties of the National Trust. The view of the Abbey ruins in the river valley is unforgettable. The abbey church survives almost to full height, with the nave and many windows almost to full height. One _____ the most impressive features of the Abbey is the magnificent cellarium (basement), over 300 ft long.



The ruins in the grounds of the Studley Royal Estate is truly unique. Covering 650 acres of park, woodland and ornamental gardens, Studley Royal is a place of great beauty.



When visiting Studley Royal, do be sure to visit the lakeside shop and tearoom – it is recommended _____ its excellent food!

2 Answer the question.

Would you like to visit this place? Why or why not?
