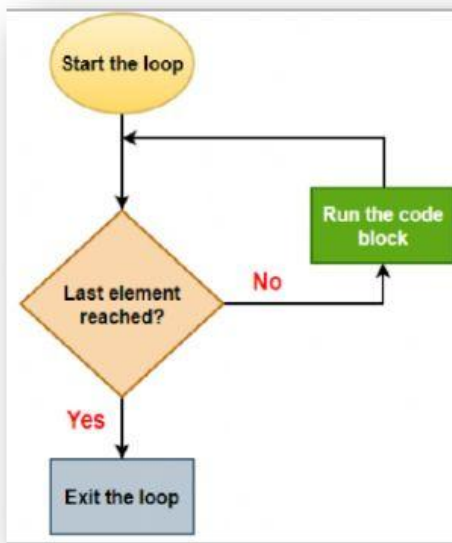
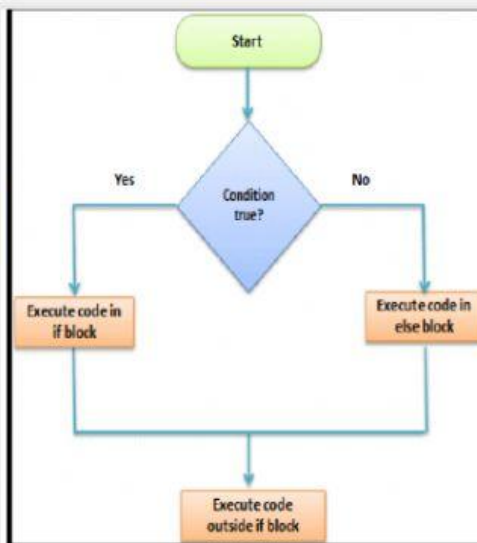


TYPES OF FLOW CHART(python)

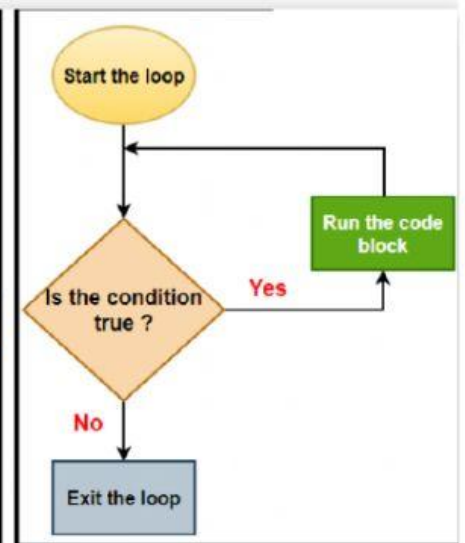
If - else



for loop



while loop



Solve on IDLE (script mode)

Q-Ask for two numbers. If the first one is larger than the second, display the second number first and then the first number, otherwise show the first number first and then the

```

num1 = int(input("Enter first number: "))
num2 = int(input("Enter second number: "))
if num1 > num2:
    print(num2, num1)
else:
    print(num1, num2)
  
```

Q-Ask the user to enter their name and then display their name three

```

name = input("Type in your name: ")
for i in range(0, 3):
    print(name)
  
```

Q-Ask the user to enter a number between 10 and 20. If they enter a value under 10, display the message "Too low" and ask them to try again. If they enter a value above 20, display the message "Too high" and ask them to try again. Keep repeating this until they enter a value that is between 10 and 20 and then display the message "Thank you".

```

num = int(input("Enter a number between 10 and 20: "))
while num < 10 or num > 20:
    if num < 10:
        print("Too low")
    else:
        print("Too high")
    num = int(input("Try again: "))
print("Thank you")
  
```