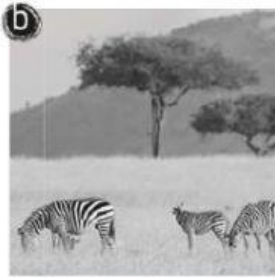


# 2

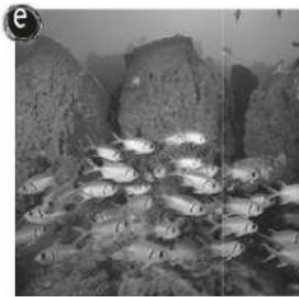
## ECOSYSTEMS

1

Label the photos with the names of the ecosystems.



freshwater



2

Complete the table with words from the box.

~~air quality~~ climate fauna soil water fauna

Abiotic factors	Biotic factors
air quality	

**3** What's missing? Complete the diagram.



**4** Are the sentences *true* or *false*?

- a) An ecosystem can be as big as the ocean or as small as a puddle. true
- b) Ecosystems are made up of living things and abiotic factors.
- c) Dry places allow trees to grow in groups called forests.
- d) The climate of an area affects an ecosystem.
- e) Animals in colder climates need a thin layer of fat.
- f) Artificial elements of an ecosystem include buildings, airports and trees.

- 5** Jane is reading an article to her friend, Eric, about ecosystems. She tells Eric that this forest ecosystem is located near the equator. Answer the following questions.

- 1 What ecosystem is Jane telling Eric about? \_\_\_\_\_
- 2 What is the climate like?  
a) Hot and dry.      b) Cold and rainy.      c) Hot and rainy.
- 3 What animals live there?  
a) Snakes, monkeys, insects.      b) Polar bears, seals, penguins.  
c) Camels, snakes, foxes.
- 4 Write down one other fact about this ecosystem. \_\_\_\_\_

- 6** Read the article about an ecosystem. Choose the best word (a, b or c) for each gap.

### A man-made ecosystem

The Biosphere 2 is an investigation centre that was built to test if humans could live in closed (1) .....

It contained a working and living area, a farming area and five different ecosystems. The ecosystems included a savannah, a desert, a rainforest, a mangrove and an (2) ..... with a coral reef. (3) ..... factors like soil, climate and air quality were different for each ecosystem and had to be watched closely.

Problems with these factors caused many (4) ..... to die during the experiment.

Eight humans were sent to live inside the centre for two years. They studied how the organisms (5) ..... with each other. Even though the experiment (6) ..... twice, the centre is still used by university students.



- 1 ☒ a) ecosystems      b) zones      c) areas
- 2 ☒ a) forest      b) tundra      c) ocean
- 3 a) Abiotic      b) Nature      c) Biotic
- 4 a) population      b) individual      c) populations
- 5 a) died      b) interacted      c) swam
- 6 a) fail      b) failing      c) failed