

Which vertebrate has two lives?

1. Match to make correct sentences

These animals eat other animals oviparous

These animals eat plants omnivores

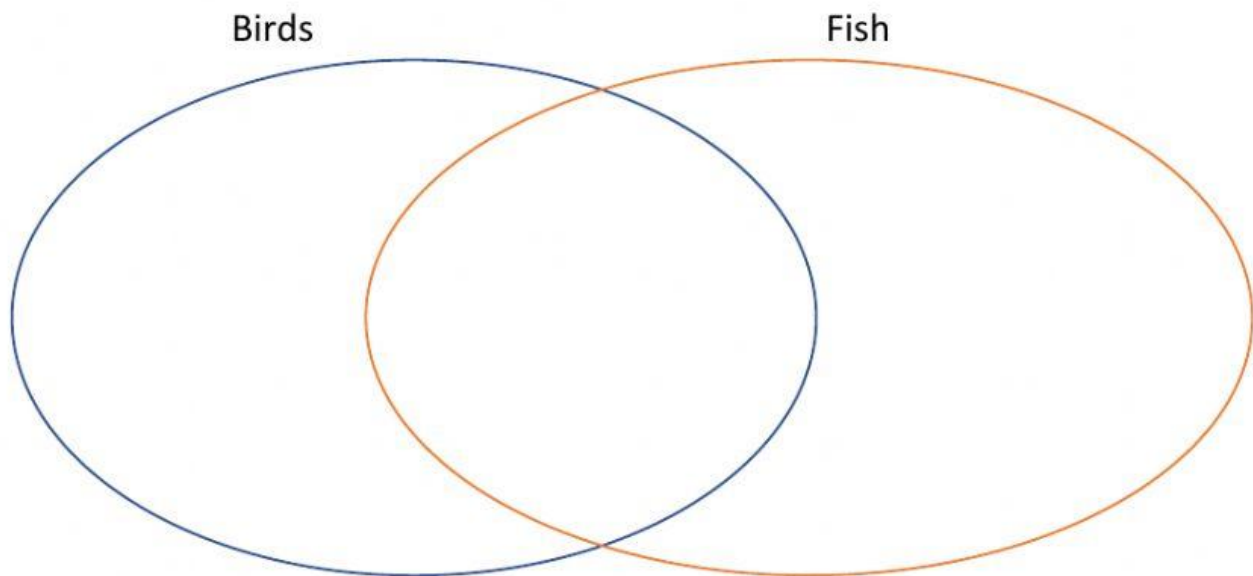
These animals eat both plants carnivores
and other animals

These animals lay eggs Viviparous

These animals' babies are born Herbivores
live

2. Use the words in the boxes to complete the Venn diagram

Breathe using lungs	Oviparous	Scales	Vertebrate	Feathers
Carnivores, herbivores or omnivores	Breathe using gills	Wings	Fins	



3. State True or False

- a. Turtles, snakes and crocodiles are reptiles
- b. Reptiles are viviparous
- c. Most reptiles are herbivores
- d. Reptiles breathe through their moist skin
- e. Reptiles lay their eggs in water

4. Complete the table using the words in the box.

Scorpions	Shell	Two	Invertebrates	myriapods
-----------	-------	-----	---------------	-----------

- a. The majority of animals on Earth are _____
- b. Insects have _____ antennae
- c. _____ have many pairs of legs

- d. Some molluscs have a _____ for protection.
- e. Spiders and _____ are arachnids.

5. State the odd one out

- a. Pig / sheep / horse / lizard
- b. Bee / butterfly / spider / ant
- c. Frog / chameleon / toad / salamander
- d. Snail / tortoise / snake / crocodile
- e. Gastropod / bivalve / cephalopod / insect

6. Unscramble the letters to find the words

- a. All arthropods have this for protection
notsoxeleke
- b. Gastropods belong to this group
usomllcs
- c. Crustaceans have four of these body parts
natenean
- d. Invertebrates do not have this
Kabeconb

7. Complete the sentences using the words below

Vertebrates	Two	Invertebrates	Have	Do not have
-------------	-----	---------------	------	-------------

a. We can classify animals into _____ main groups.

b. These animals are _____. They _____ a backbone.

c. These animals are _____. They _____ a backbone.

8. Identify the invertebrates in the pictures using the words below.

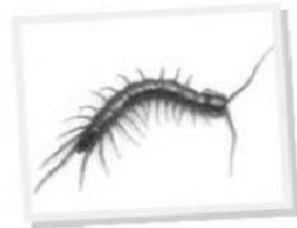
Bivalve	Insect	Arachnid	Myriapod	gastropod
---------	--------	----------	----------	-----------



a) cephalopod



b) _____



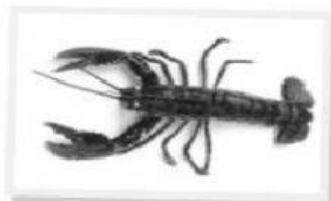
c) _____



d) _____



e) _____



f) crustacean



g) _____