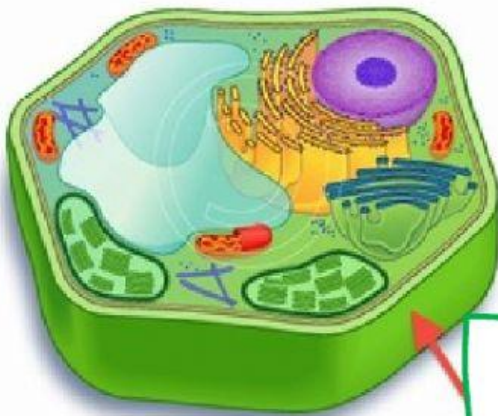


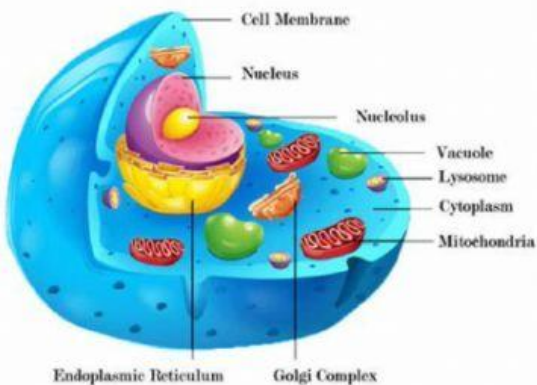
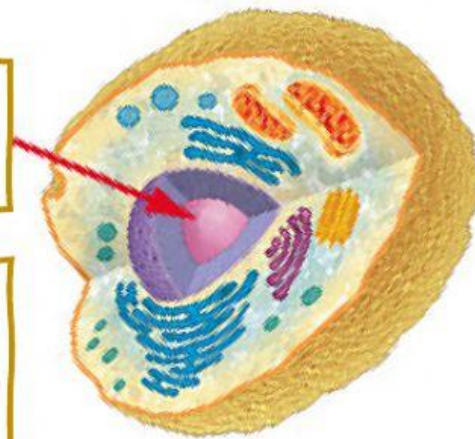
Cell Vocabulary 1



A rigid structure that surrounds the cell membrane and supports the cell.

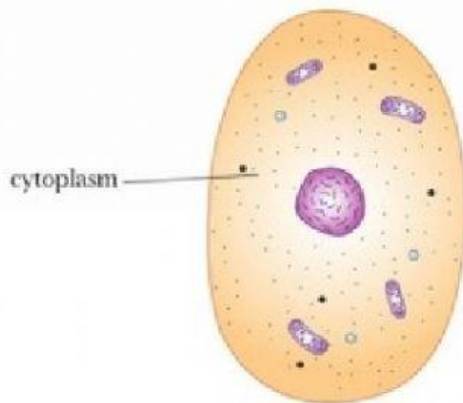
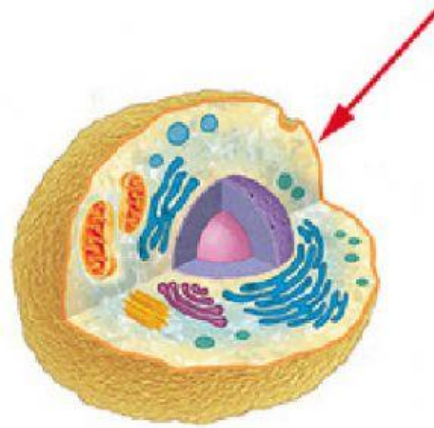


Like the “brain” of a cell. It controls what a cell does, and contains DNA.



These are small parts of a cell that do small jobs. They are like animal organs (heart, lungs, brain) but for cells!

This controls what can enter or leave the cell. Like a doorway, but a fluid wall!



A liquid inside the cell which contains the organelles.

Bonus Question:

What is the best tool for looking at and studying cells? (m_____)