

NAME: _____ DATE: _____

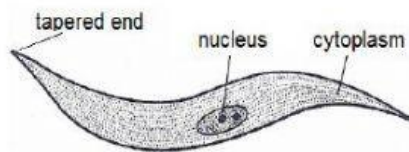
SPECIALIZED ANIMAL CELLS



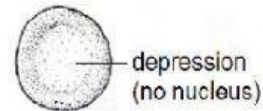
Student's Work

Below are diagrams showing each of the animal cells mentioned in the table above. Let's see how observant you are. Use the structural descriptions in the table to identify each cell. Write the name of the cell on the appropriate line. [2 marks each]

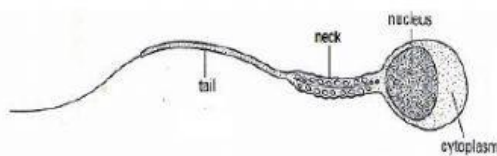
1



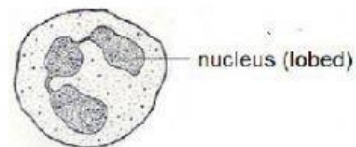
2



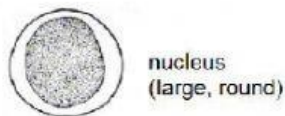
3



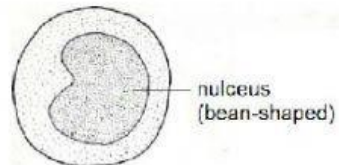
4



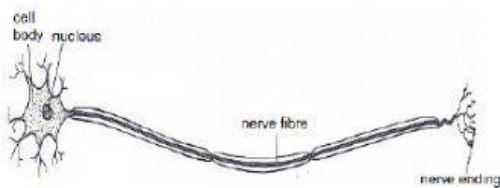
5



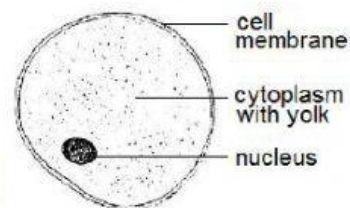
6



7



8



Plant and Animal Cells

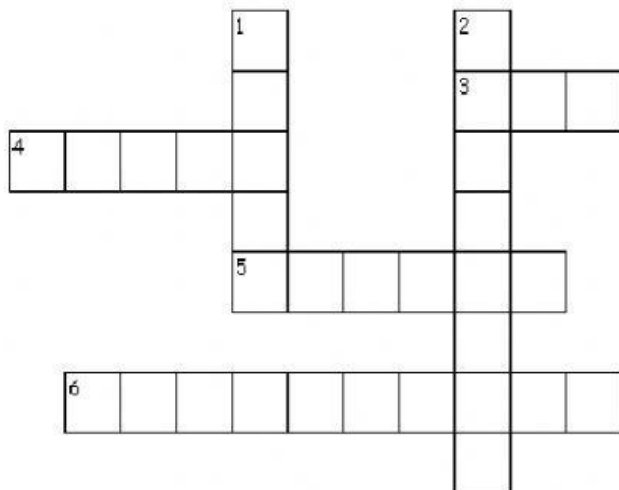
M R I B O S O M E J F Q C Q L
 E I P N R U D Z Y W F U E L M
 T R T F U A K G I J Q Z L B S
 N S E O R C O N Y E X K L B A
 A X A Y C A L L P B B A M G L
 I R Z L C H L E D N R A E S P
 I E K L P A O N U G K L M O O
 Z A V V W O B N E S N M B T T
 Z T E L Y X R V D U W O R D Y
 G C L D S N A O W R B J A T C
 S E C A T C Z L L H I A N K C
 C B E X U W D B D H S O E G T
 Y W I O Z F L U S B C Y N H E
 A E L O U C A V L L A M S Q V
 U E Q P U U J J S R E L K G B

CELLMEMBRANE
 CELLWALL
 CHLOROPLAST

CYTOPLASM
 LARGEVACUOLE
 MITOCHONDRION

NUCLEUS
 RIBOSOME
 SMALLVACUOLE

Specialized Cells



Across

3. Fertilized by sperm cell to make a baby.
4. For carrying messages around the body
5. Contract and relax for movement
6. Fights germs that enter the body

Down

1. Has head, neck and tail; for fertilizing egg cell
2. Carries oxygen around the body

