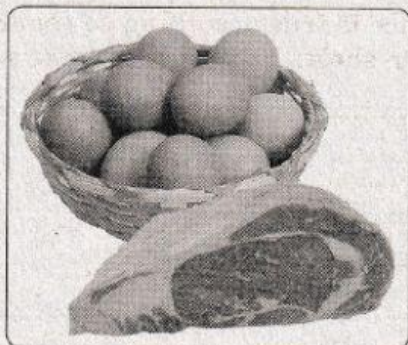


Listening

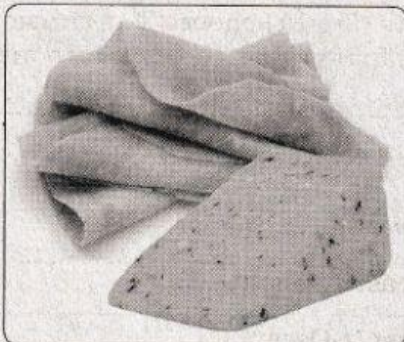
Task 1

Listen to the speakers. For questions (1—6) choose the correct answer (A, B or C). Write your answers on the separate answer sheet. You will listen to each recording twice.

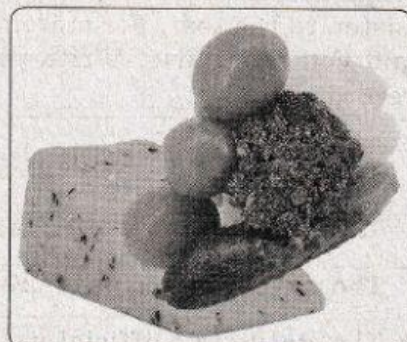
1 What food won't they throw away?



A



B



C

2 What is missing?



A

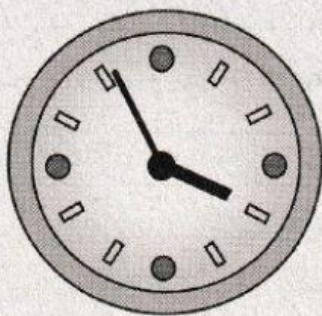


B

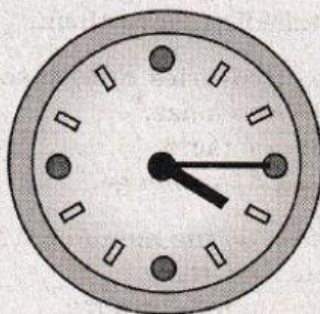


C

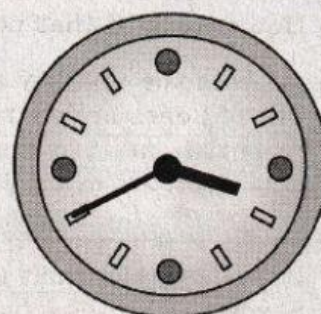
3 What time is the next flight to Zaragoza?



A



B



C

4 What will the viewers see after the news?

A A sports programme.

B A culinary show.

C A programme about animals.

- 5 What was Jean's impression of the cruise?
A She didn't like it at all.
B She thought staying by the pool was boring.
C She wishes her family members had acted in a different way.
- 6 Where will they spend the night?
A In a tent at the campsite.
B In a tree-star hotel.
C In the nearest hostel.

Task 2

Listen to the text. For statements (7—11) choose T if the sentence is true according to the text, and F if it is false. Write your answers on the separate answer sheet. You will listen to each recording twice.

- 7 The Academy Awards ceremony is held every January.
8 The first Academy President was L. B. Mayer.
9 The ceremony has been broadcast live since 1930.
10 The statuette's official name isn't Oscar.
11 The Academy Awards is the oldest ceremony concerning awards in entertainment.

Task 3

Listen to the text. For questions (12—16) choose the correct answer (A, B or C). Write your answers on the separate answer sheet. You will listen to each recording twice.

- 12 Which of the following is stated in the text?
A Stonehenge was built 1,500 years ago.
B Scientists have discussed its mystery for more than a thousand years.
C It took 1,500 years to build the monument.
- 13 What impresses people about the stones?
A Their weight and height.
B How far they were moved.
C How people of that period managed to move them.
- 14 What does the text say about the discoveries related to Stonehenge?
A The old ones are contrary to the new ones.
B Scientists need to analyse plenty of facts.
C Scientists are designing a map of Stonehenge.
- 15 What do we know about the purpose of the monument?
A It's most likely that it was a burial site.
B Several purposes have been determined for sure.
C It definitely served as an astronomical calendar.
- 16 Access to the monument _____
A was permitted only up to 1977.
B is strictly forbidden.
C is possible under certain specific conditions.