

NAME: _____ DATE: _____ 10: _____

CHARACTERISTICS OF LIVING ORGANISMS

1. On the lines after each statement below, write the characteristic of life which BEST describes what is being stated. (20 marks)

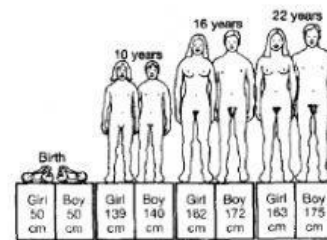
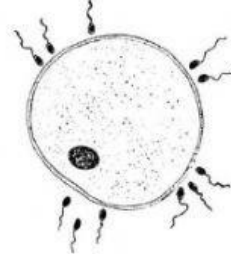
GROWTH, REPRODUCTION, RESPIRATION, EXCRETION, FEEDING, MOVEMENT, SENSITIVITY

- a. An earthworm turns away from light. _____
- b. A bean seed produces a bean plant. _____
- c. You are answering this question. _____
- d. A person breathes out carbon dioxide. _____
- e. You become thirsty after exercise. _____
- f. A green plant grows in the direction of sunlight. _____
- g. The average American female lives 74 years. _____
- h. A caterpillar eats the leaves of a plant. _____
- i. A hummingbird can hover like a helicopter. _____
- j. Cats mate and produce kittens. _____
- k. A bear hibernates when it is cold. _____
- l. A bean plant produces bean seeds. _____
- m. You see the killer, scream and run away. _____
- n. A stomach rumbles at a favourite meal which is eaten. _____
- o. You enjoy a lovely salad from Burger Barn. _____
- p. The salad from Burger Barn makes your salivary glands produce saliva. _____

2. Beneath each diagram, state what characteristic of life is being shown.

(6 marks)

GROWTH, REPRODUCTION, RESPIRATION, EXCRETION, FEEDING, MOVEMENT, RESPONSE to STIMULI



3. Complete the table below by classifying the following organisms as being living, non-living or dead.

(15 marks)

SKELETON

ERASER

BROWN LEAF

STONE

CHEWING GUM

PEN

GREEN LEAF

CORPSE

REMAINS

CARCASS

HUMAN

PLASTIC

MANGO TREE

MOSQUITO

DOG

Living	Non-Living	Dead