

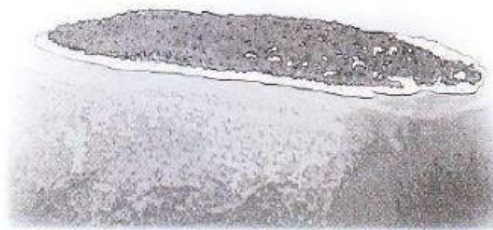
Questions 19-26 are about the following passage.

Coral reefs are rocklike protrusions that extend from a coastline into the ocean. They are made from coral, a living organism. Coral polyps appear to be small plants to many people, but they are in actuality a type of marine life. They grow in clusters and secrete a substance made of calcium carbonate that protects their
5 bodies. This substance, in turn, forms a rocky structure that creates the reef itself.

Coral reefs form some of the ocean's most unique ecosystems. They are vibrant places which attract a wide variety of marine plants and animals. There are a couple of reasons that many sea creatures, particularly fish, live in coral reefs. The first is that the reefs are rich in nutrients, so there is an abundance of food for them to
10 eat. The next is that coral reefs provide protection from large predators. The hard, rocky reefs can wound large fish, such as sharks, that try to enter. Due to the absence of many voracious predators, smaller fish often lay their eggs in coral reefs. When the fish hatch, the reefs act as sanctuaries for them as they become adults.

Unfortunately, many of the planet's coral reefs are in danger of disappearing
15 due to both natural and manmade reasons. Coral requires ideal conditions to live. It can only survive in warm water, which means that it is virtually only found in tropical location. The water that coral resides in must also be shallow since it needs access to sunlight in order to survive. Yet the ocean is not static but is in a constant state of change. Sometimes the water temperature in a place where coral grows
20 may become too hot or too cold. This can result in the destruction of an entire reef.

As for manmade problems, there are two major ones. First, pollution caused by humans – such as the dumping of chemicals in the water – can kill coral, which is quite sensitive. Second, some humans actively destroy coral reefs. Many are fishermen. Some of them eschew nets in favor of dynamite. They kill numerous fish with
25 explosives but damage the reefs in the process. On a smaller scale, some people cut off coral from reefs to make jewelry from or to use for home aquariums. All of these factors combine to endanger many of the world's coral reefs.



19. What does the author imply about coral polyps?
- (A) Some people think they are vegetation.
 (B) They grow rapidly early in their lives.
 (C) They usually live amongst ocean plants.
 (D) It takes a lot of food for them to grow.
20. Which of the following statements does paragraph 1 support?
- (A) Coral polyps survive by consuming small plants.
 (B) Coral reefs are sometimes located deep in the ocean.
 (C) Coral polyps produce a substance that protects them.
 (D) Coral can live on shore so long as it is near the coast.
21. In line 9, the word them refers to _____.
- (A) a couple of reasons
 (B) many sea creatures
 (C) the reefs
 (D) nutrients
22. In line 12, the word voracious is closest in meaning to _____.
- (A) stealthy
 (B) gigantic
 (C) ravenous
 (D) vicious
23. In line 13, the word sanctuaries is closest in meaning to _____.
- (A) havens
 (B) estuaries
 (C) aquariums
 (D) containers
24. According to the passage, which is necessary for coral to survive?
- (A) salt water
 (B) nutrients
 (C) sunlight
 (D) deep water
25. In line 24, the word eschew is closest in meaning to _____.
- (A) employ
 (B) prefer
 (C) demean
 (D) avoid
26. Which of the following is NOT mentioned as a way that humans are harming coral reefs?
- (A) They are fishing in some coral reefs.
 (B) They are polluting the water the reefs are in.
 (C) They are catching many live fish for aquariums.
 (D) They are destroying some of the coral in reefs.