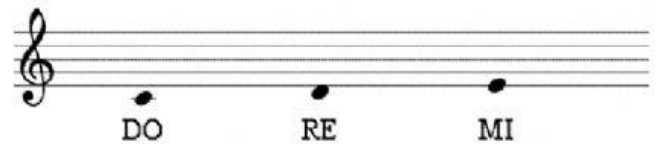
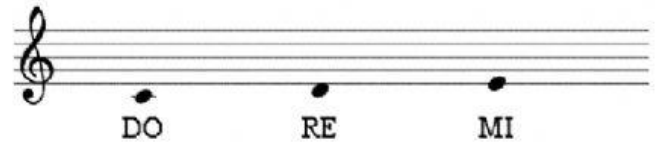


Five empty rectangular boxes are positioned below the musical staff, corresponding to the five notes above. The first box is wider than the others, and the last box is also wider than the others.



Seven empty rectangular boxes are positioned below the musical staff, corresponding to each note. The last box is significantly wider than the others, likely intended for a longer note value or a specific instruction.



Seven empty boxes for labeling the notes on the staff above. The first six boxes are small squares, and the last one is a larger rectangle.