

Name \_\_\_\_\_

Date \_\_\_\_\_

Year Group \_\_\_\_\_

Use the graph the answer questions below about the exponential functions

The red exponential function is  $f(x) = 2^x$

1. What type of shift happened with the red equation to the orange equation?

Answer = \_\_\_\_\_

2. What is the equation of the orange exponential function?

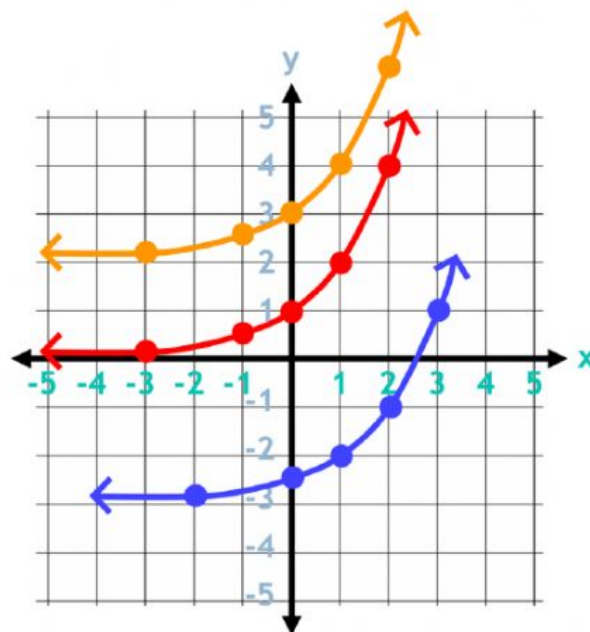
Answer =  $2^x$  \_\_\_\_\_

3. What type of shift happened with the red equation to the blue equation?

Answer = \_\_\_\_\_

4. What is the equation of blue exponential function?

Answer =  $2^{(x \text{ --- })}$  \_\_\_\_\_



Please drag the numbers to match the description of the exponential functions

- 5.
- base 7
  - vertical stretch by a factor of 5
  - horizontal shift 2 to the left
  - vertical shift 3 down

Answer

\_\_\_\_\_ \*  $7^{(x \text{ --- })}$  \_\_\_\_\_

- 6.
- base 7
  - vertical shrink by a factor of 5
  - horizontal shift 3 to the right
  - vertical shift 2 up

Answer

\_\_\_\_\_ \*  $7^{(x \text{ --- })}$  \_\_\_\_\_

5	$\frac{1}{5}$	2	2	3	3
+	+	-	-		