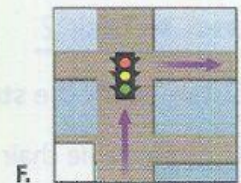
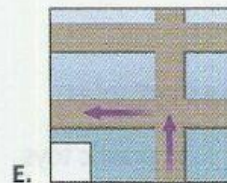
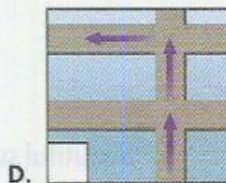
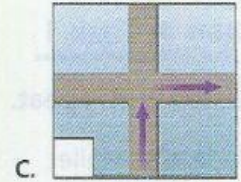
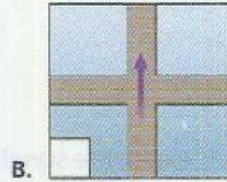
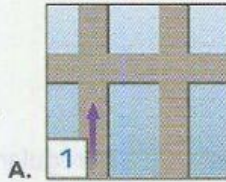


Directions

Getting Ready

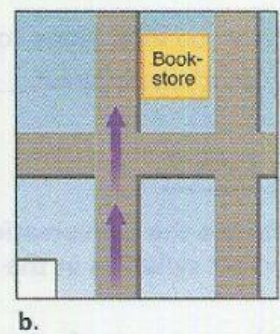
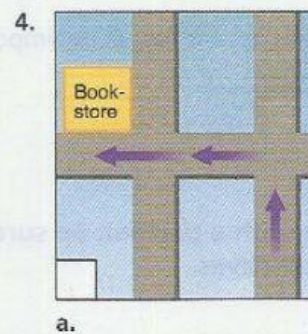
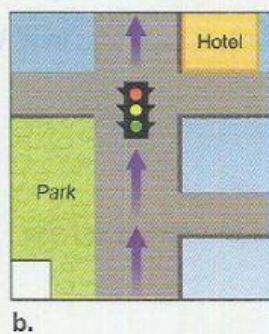
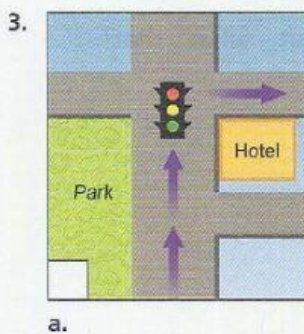
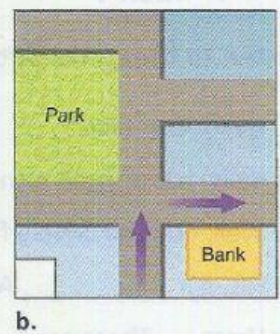
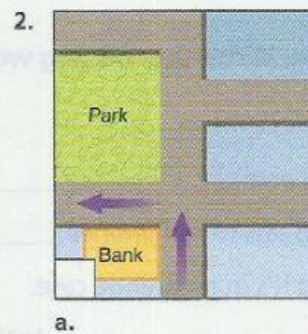
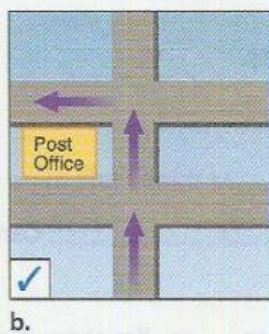
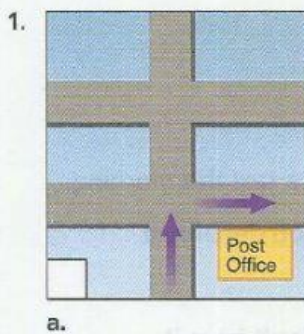
Match each direction with a map.

- Go straight up the block.
- Turn right at the light.
- Take the first street on the left.
- Go straight for two blocks. Then turn left.
- Go through the intersection.
- Take a right at the corner.



CD 3-23 Listening 1

People are giving directions. Listen and check (✓) the correct map.

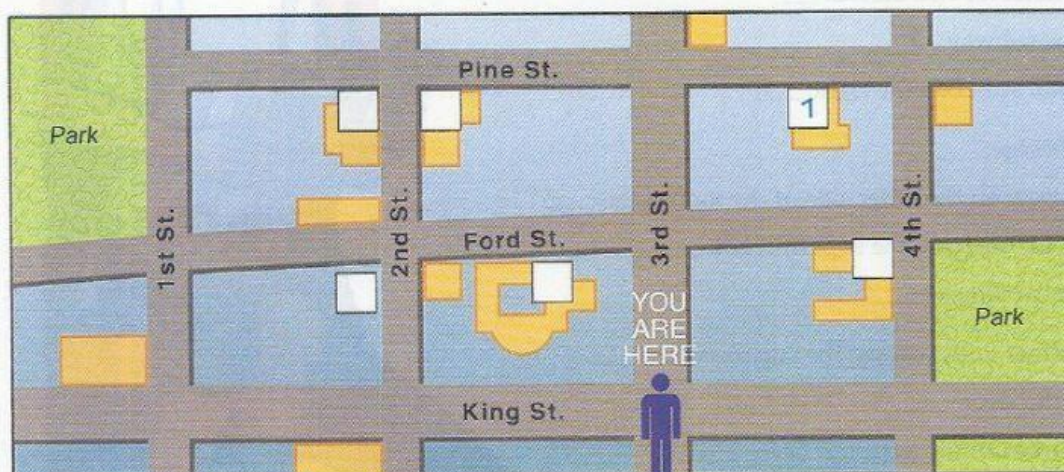


Listening 2

CD 3-24 ► Task 1

Look at the map and listen to the directions. Write the number of each place on the map.

- | | |
|--------------------------|-----------------------|
| 1. a bank | 4. the post office |
| 2. the Peking Restaurant | 5. the tourist office |
| 3. a supermarket | 6. the art museum |



CD 3-24 ► Task 2

Listen again. Complete the statements for each set of directions.

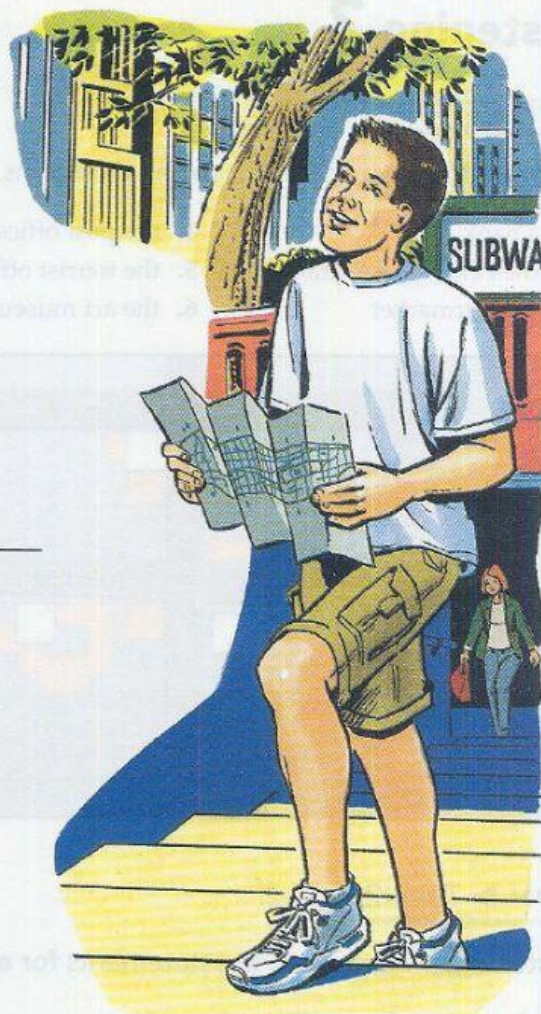
- Go straight up Third Street for two _____ and _____ right on Pine Street.
- It's _____ your left, on the _____ of Ford and Second.
- Go left down King and _____ go _____ Second Street for two blocks.
- It's not far _____ here.
- Go up Third Street and turn _____ on Ford. It's in the first big building you see on your _____.
- Go to the _____ of the block.

Listening 3

CD 3-25 ► Task 1

People are giving directions to their homes. Listen and number the directions in the correct order.

1. Go down the street and my house is on the left. ____
Walk past the hotel for two blocks. ____
Come out of the subway. 1
You'll see a small street on the right. ____
2. Cross the footbridge. ____
Go down the street on the other side of the footbridge. ____
Get off the bus across from the supermarket. ____
Walk north for two blocks. ____
3. Go down the street until you see the supermarket. ____
Walk towards the river. ____
Take the first street on the left. ____
Go through the intersection. ____
4. Get off the bus across from the school. ____
Go down the street until you see a church. ____
Turn right just past the gas station. ____
Walk north for about four blocks. ____



CD 3-25 ► Task 2

Listen again. What should each person bring? Circle the correct answer.

- | | |
|-----------------|------------------|
| 1. a. food | 3. a. vegetables |
| <u>b.</u> music | b. chips |
| c. a DVD | c. fruit |
| 2. a. snacks | 4. a. sneakers |
| b. soda | b. balls |
| c. music | c. tennis racket |

IR Language
مرجع آموزش زبان ایرانیان

Pronunciation

Intonation for confirming information

CD 3-26 ► **Task 1**

Listen and repeat.

1. A: Is there a post office near here?
2. A: Could I please have a map?
3. A: Do you know where the restrooms are?
4. A: I'm trying to find a supermarket.

B: A post office?

B: A map?

B: The restrooms?

B: A supermarket?

Pronunciation Help

Use rising intonation to ask a question that confirms information.

► Task 2

Read the sentences to a partner. One student is A, the other student is B.

Dictation

CD 3-27 ► **Task 1**

Listen. Write the missing words. Then practice with a partner.

A: Excuse me. I'm looking for the tourist office.

B: _____ office? It's not far from here. Go right on Brentwood Road, then left at the light.

A: Left _____ the _____?

B: Yes, that's right. Then it's about halfway down the block on the right.

A: _____ right?

B: Yes. You can't miss it.

Conversation

Work in pairs. Give your partner directions from your school to your home.