

Time Lapse

Michael Nyman 1984

Ground Bass



Time lapse by Michael Nyman was originally composed for a film called A Z and two noughts, produced in 1984. Timelapse is composed using a ground bass and a repeating chord sequence. A ground bass is a sequence of bass notes that repeats throughout an entire piece. This device was used particularly frequently by composers of the baroque period (1600 to 1750).

Watch the music here & answer the following questions:



1. Describe the TEXTURE of the opening

Unison - all playing the same notes (*at same pitch or an octave apart*)

Homophonic - all playing basically together but in harmony

Polyphonic - all coming in at different times with lots of imitation

2. Describe the TEMPO

Adagio

Allegretto

Presto

3. Describe the TONALITY

Major

Minor

Atonal

4. Describe the metre

Simple time

Compound time

5. What FAMILY plays the following melody?



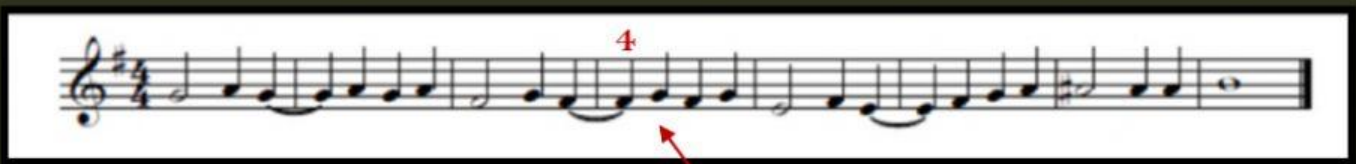
Strings

Woodwind

Brass

Percussion

6. What FAMILY plays the following melody?



Trumpet

Trombone

Horn

Tuba

7. Listen again to the melody of question 6. There are some notes that need corrected in bar 4. Which of the images below represent what is being played.

A

B

C

Etc.

8. Keep listening and answer questions 8-10:
What WOODWIND instrument plays this melody?



9. Give TWO RHYTHMIC features that you hear in the above melody

Minor

Major

Triplets

Syncopation

Ties

Dotted notes

Sequence

Stepwise

10. The violins are also playing alongside the woodwind instrument.
What is the TEXTURE between them?

Unison

Homophonic

Polyphonic

11. After the violins play the melody below, a high WOODWIND instrument plays it.



The image shows a musical score for a high woodwind instrument, consisting of three staves. The first staff starts at measure 1 and ends at measure 3. The second staff starts at measure 4 and ends at measure 6. The third staff starts at measure 7 and ends at measure 9. The music is in 4/4 time and G major. The melody is a continuous eighth-note pattern that moves up and down the scale, with some grace notes and slurs.

Name the high woodwind instrument.

12. On the final repetition, what happens to the pitch of the melody that this high woodwind instrument is playing?

Same as before

Up a semitone

Up an octave

Down an octave

13. The whole piece is based on a 'ground bass'. What is the best description of this term?

A repeated theme in the bass while the upper parts are varied

A long-held note in the bass

A long-held note in the high instruments while the bass is varied

A series of broken chords in the bass

Have a go at playing some of the different layers in Time Lapse

Ground Bass

Ground Bass musical notation in bass clef, 4/4 time. The first staff shows notes E, E, E, E, C, D, B, B. The second staff shows notes C, A, A#, B.

Em Am⁷/C D Gmaj⁷/B C F#m⁷/A F#⁷/A B^(sus 4) B

Chords 3

Chords 3, 2, 1 musical notation in treble clef, 4/4 time. Three staves show chord progressions corresponding to the chord list above.

Melody 1

Melody 1 musical notation in treble clef, 4/4 time. Notes: G4, A4, B4, C5, B4, A4, G4, F#4, E4, D4.

Melody 2

Melody 2 musical notation in treble clef, 4/4 time. Notes: G4, A4, B4, C5, B4, A4, G4, F#4, E4, D4, C4, B3, A3, G3, F#3, E3, D3, C3.

Melody 3

Melody 3 musical notation in treble clef, 4/4 time. Notes: G4, A4, B4, C5, B4, A4, G4, F#4, E4, D4, C4, B3, A3, G3, F#3, E3, D3, C3.

5

Melody 3 continuation musical notation in treble clef, 4/4 time. Notes: B3, A3, G3, F#3, E3, D3, C3, B2, A2, G2, F#2, E2, D2, C2.

Melody 4

Melody 4 musical notation in treble clef, 4/4 time. Notes: G4, A4, B4, C5, B4, A4, G4, F#4, E4, D4, C4, B3, A3, G3, F#3, E3, D3, C3.

4

Melody 4 continuation musical notation in treble clef, 4/4 time. Notes: B3, A3, G3, F#3, E3, D3, C3, B2, A2, G2, F#2, E2, D2, C2.

7

Melody 4 continuation musical notation in treble clef, 4/4 time. Notes: B3, A3, G3, F#3, E3, D3, C3, B2, A2, G2, F#2, E2, D2, C2.