

Water – an essential environmental resource

Water is essential for life on our planet.

1. Refer to images A to L. Identify the uses of water in the activities and processes represented in the images. Use terms from the word bank below.

Word bank

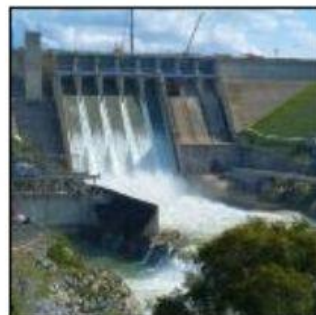
drinking, irrigation, agriculture, trade, leisure, mining, transport, energy



A.



B.



C.



D.



E.



F.



G.



H.



I.



J.



K.



L.