

35 minutes

For  
Teacher's  
Use

Science  
Stage 3

Name.....

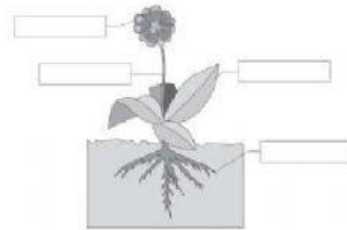
**READ THESE INSTRUCTIONS FIRST**

Answer all questions in the spaces provided on the question paper.

The number of marks is given in brackets [ ] at the end of each question or part question

Page	Mark
1	/
2	/
3	/
4	/
5	/
6	/
7	/
8	/

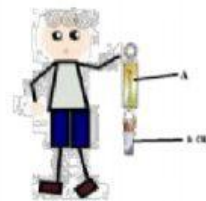
1. Label Aisya's parts of plant below.



2. The table shows some materials and their properties. Complete the table.

Materials and Object	Property of materials	
	Is it hard?	Is it flexible?
Wood door		no
Plastic wrap		
Cotton clothes	no	

3. Alif measures the force of ta cup with pencils inside it. He use an equipment to measure the force.



- Name the equipment "A" to measure the force.  
\_\_\_\_\_
- If the cup and the pencils weight is 4 units. What should Alif do to **increase** the force?  
\_\_\_\_\_
- What will happen with the force if Alif take the all the pencils away from the equipment?  
\_\_\_\_\_

4. Rosyid has a pet. The pet name is Donald.



Mention **2 life processes** of the pet.

a. \_\_\_\_\_

b. \_\_\_\_\_

5. Here are the properties of some materials.

Materials	properties			
	is it strong or weak?	does it conduct heat?	does it have a high melting point?	does it conduct electricity?
A	strong	yes	yes	yes
B	strong	no	yes	no
C	Weak	yes	yes	yes
D	weak	no	no	no

a. Which material conducts heat and conduct electricity?

\_\_\_\_\_

b. Metals conduct electricity and heat. **Which two** materials are metals?

\_\_\_\_\_

6. Musa likes to play a slide.



a. Musa sits at the top of the slide happily. He is not moving. What must Musa do to move down the slide?

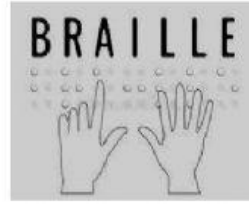
\_\_\_\_\_

b. Musa moves down the slide slowly. Write down **two things** he can do to move down **faster**?

1. \_\_\_\_\_

2. \_\_\_\_\_

7. Blind people use braille bump to read.



a. Which sense is being used to read the braille bumps?

b. Each letter has a different pattern of bumps.



**What information** do you need to read a book using braille?

\_\_\_\_\_

8. My mom investigates what the difference between the sushis' before and after pick up by the chopsticks. The sushis' shapes are circle on the plate. After she picks up the sushis with chopstick and **add the same force**, she put it in another plate. There is something difference with the sushi. Guess what changes happens before and after the sushi pick up by the chopstick. Answer these questions below.



a. The force of the chopstick make the sushi's change the \_\_\_\_\_.

b. Why my mom used the same force when she investigates the force?

\_\_\_\_\_

9. Here are some metals to make magnet. Choose which magnetic materials can be used to make it?

iron                  aluminium                  copper                  steel  
cobalt                  gold                  nickel

10. Some of our food can make us healthy or can damage our health.

a. Here are some foods in the list.

banana                  cookies                  hamburger  
fried egg                  celery                  peanut

Decide if each food is healthy or can damage our health. Put the foods in the correct column in the table. One has been done for you.

Can damage our health (unhealthy)	Healthy
.....	Banana
.....	.....
.....	.....

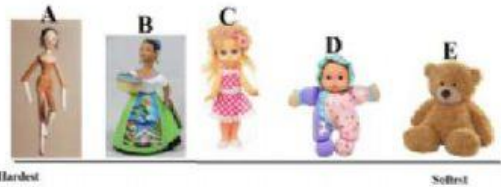
b. Sweet chocolate can damage our healthy. Mention **two things** which make chocolate is unhealthy to eat.

- ✓ \_\_\_\_\_
- ✓ \_\_\_\_\_

c. Banana is fruit which can make our body healthy. Write one of these things.

\_\_\_\_\_

11. Syafa investigates forces on dolls. She has 5 different dolls. Syafa puts the dolls in order from hardest to softest.



a. Which doll needs the **least** force to make it change shape? Circle the correct answer.

A                  B                  C                  D                  E  
b. Syafa uses a small force to change the shape of the dolls. **Two** of the dolls **do not change shape**. Which two dolls **do not change shape**? Circle the correct answer.

E and D                  D and C                  B and A

12. Abraham have a plat. He always watering his plants every day. **Complete these sentences below.**

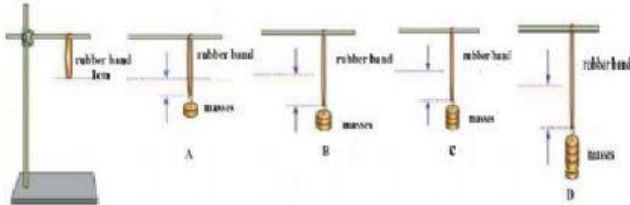


a. Water travels up the plant through the \_\_\_\_\_.

b. One day, Abraham and his family went to Yogyakarta for 5 days to spend his holydays. Write what will happen to Abraham's plant if no one at his home watering his plant?

\_\_\_\_\_

13. Hamzah and Hanif investigate rubber bands.



Hamzah puts masses on the rubber band. Hanif counts the number of masses when the rubber band breaks.

a. What happens to the rubber band before it breaks? **Complete the sentence!**

The rubber band \_\_\_\_\_.

b. Hamzah and Hanif repeat the method with four different rubber bands. Hamzah writes down the results.

rubber band D = 4 masses      rubber band B = 2 masses

rubber band C = 3 masses      rubber band A = 1 masses

Complete this table below.

rubber band	number of masses added in rubber band
A	.....
B	.....
C	.....
D	.....

c. Tick the correct statement below, which represent the result of the added masses.

<b>The total is 20 units</b>
<b>The masses are different</b>
<b>The masses are the same</b>

14. Third grader students are investigating growth of tomato plants in a month. They measure the height of their plants.

- ✓ at the **first week**
- ✓ at the **end of the month**.

Here are their results.

Tomato plants	Height at the first week in cm	Height at the end of the month in cm	Change in height
A	5cm	15cm	10cm
B	4cm	15cm	11cm
C	7cm	20cm	13cm
D	6cm	.....	.....

a. The results for tomato "D" are missing from the table.

Use this information to **complete the table**.

**If tomato "D" grew by 12cm from 6cm at the start of week to 18cm at the end of the month.**

b. Which tomato plant grew the least during the month?

\_\_\_\_\_.

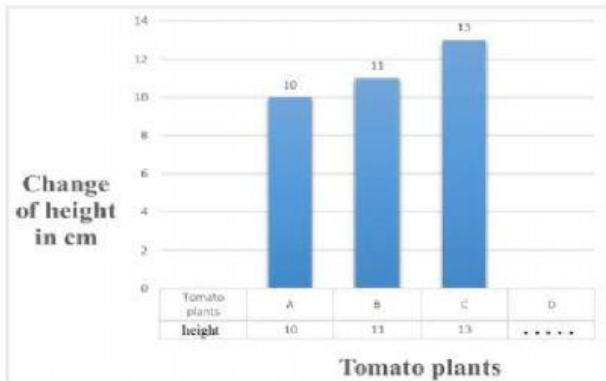
c. Look at the heights of tomato plant at the start of the week until the end of the month.

What can you say **about the heights** of the tomatoes' **plant A and B**?

The tomatoes **plant A and B** has \_\_\_\_\_ **height**.

d. Zahra draws a bar chart to show the change in height of the plant.

Draw the bar to complete the bar chart below.



15. The table shows the properties of materials belong to Maryam.

material	does it conduct electricity	Is it strong?	Is it shiny?
A	no	no	yes
B	yes	yes	yes
C	yes	no	yes
D	no	yes	no

a. Maryam sorts the materials into two groups.

Group 1 contains materials B and C

Group 2 contains materials A and D

Which property did Jamila use to sort the materials?

\_\_\_\_\_

b. Maryam sorts the materials in a different way. The materials is grouping by the strong properties.

Which materials are in this group?

\_\_\_\_\_

**\*Alhamdulillah\***