

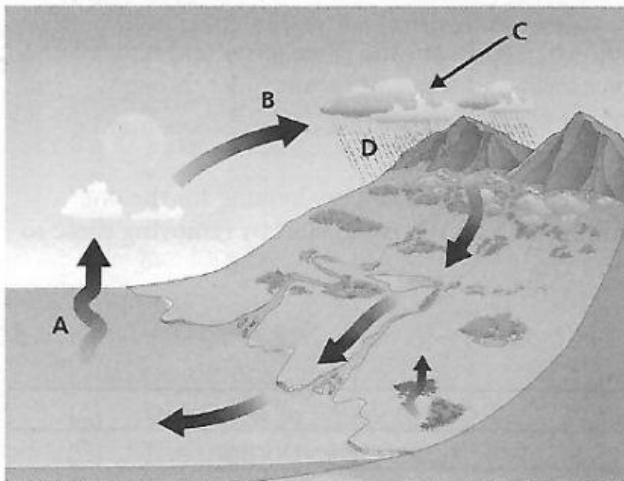
Practice test 1

- 1 The device used to measure the wind direction is a:
- (A) Thermometer
(B) Rain gauge
(C) Wind vane
- 2 What does the symbol below represent?



- (A) Sunshine
(B) Rain
(C) Snow

Questions 3–4 refer to the diagram below.



- 3 The process shown by the letter A in the diagram is:
- (A) Precipitation
(B) Evaporation
(C) Mountain building

- 4 The process shown by the letter B in the diagram is:
- (A) Condensation
(B) Evaporation
(C) Precipitation
- 5 Which of the following is one of the Earth's natural resources?
- (A) Concrete
(B) Water
(C) Plastics
- 6 Which of the following is the BEST way to dispose of plastic?
- (A) Burn it to make energy
(B) Add it to landfill
(C) Recycle it
- 7 One serious problem with landfill sites is:
- (A) They bury waste so it cannot smell
(B) They keep waste away from towns and cities
(C) They can leach poisons into water supplies
- 8 As well as recycling and re-using materials, another way to reduce solid waste is:
- (A) Reducing what we use
(B) Burning what we don't need
(C) Burying any used materials

- 9 Hard water is caused by:
- (A) The water being boiled
(B) The water being left in a very cold place
(C) The water picking up chemicals

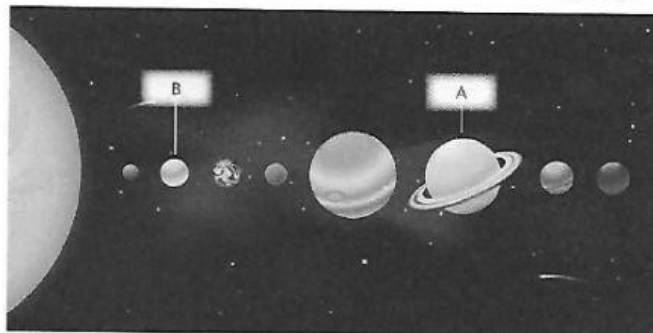
- 1 (A) (B) (C)
2 (A) (B) (C)
3 (A) (B) (C)

- 4 (A) (B) (C)
5 (A) (B) (C)
6 (A) (B) (C)

- 7 (A) (B) (C)
8 (A) (B) (C)
9 (A) (B) (C)

- 10 Which of the following is the name for cloudy water?
 (A) Conductivity
 (B) Turbidity
 (C) Acidity
- 11 The three main types of rock are:
 (A) Sandstone, mudstone, shale
 (B) Core, mantle, crust
 (C) Igneous, sedimentary, metamorphic
- 12 Which of the following are NOT part of the Solar System?
 (A) The Sun
 (B) The Earth
 (C) Stars
- 13 Which of the following is NOT an example of an artificial satellite?
 (A) The Moon
 (B) A weather satellite
 (C) A communication satellite
- 14 The Earth turns on its axis every 24 hours. This gives us:
 (A) The four seasons
 (B) The months
 (C) Night and day

Questions 15–16 refer to the diagram below.



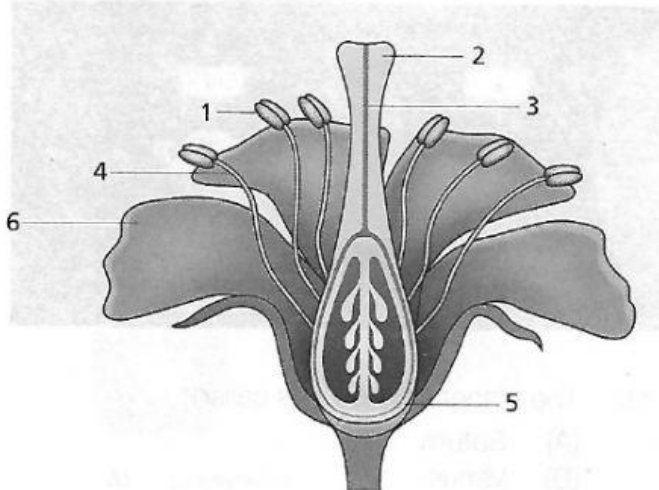
- 15 The planet labelled A is called:
 (A) Saturn
 (B) Venus
 (C) Neptune
- 16 The planet labelled B is called:
 (A) Jupiter
 (B) Mercury
 (C) Venus
- 17 As the Earth and Moon orbit the Sun different parts of the Moon are lit up. This gives us:
 (A) The Northern Lights
 (B) The Milky Way
 (C) The phases of the Moon
- 18 A key factor needed for life to evolve on a planet is:
 (A) Ice
 (B) Liquid water
 (C) Methane

- 10 (A) (B) (C)
 11 (A) (B) (C)
 12 (A) (B) (C)

- 13 (A) (B) (C)
 14 (A) (B) (C)
 15 (A) (B) (C)

- 16 (A) (B) (C)
 17 (A) (B) (C)
 18 (A) (B) (C)

Questions 19–20 refer to the diagram of the flower.

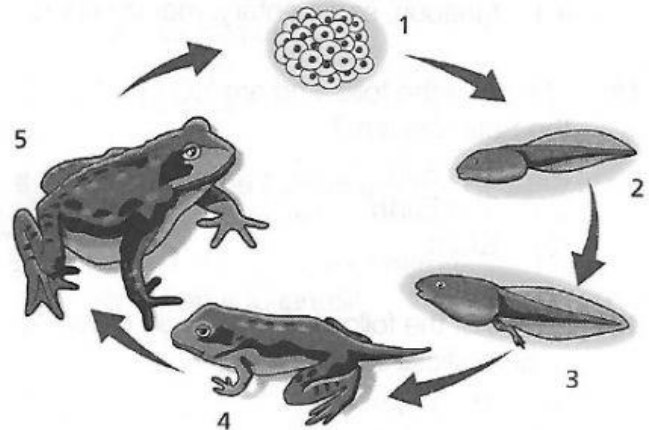


- 19 The part of the flower made up of structures 1 and 4 is the:
- (A) Pistil
(B) Ovary
(C) Stamen
- 20 The part of the flower made up of structures 2, 3 and 5 is the:
- (A) Pistil
(B) Stigma
(C) Stamen
- 21 The fusing of male and female reproductive cells is called:
- (A) Germination
(B) Fertilisation
(C) Pollination
- 22 Why do living things reproduce?
- (A) To allow them to grow larger
(B) To provide food
(C) To make new young

23 Which ONE of the following animal groups gives birth to live young?

- (A) Mammals
(B) Birds
(C) Amphibians

Questions 24–25 refer to the diagram below.



- 24 Which part of the life cycle of the frog represents the eggs?
- (A) 1
(B) 2
(C) 3
- 25 The young animal shown in stage 2 is called a:
- (A) Nymph
(B) Caterpillar
(C) Tadpole
- 26 The young animal that hatches from the egg of a dragonfly is called a:
- (A) Nymph
(B) Caterpillar
(C) Pupa

19 (A) (B) (C)
20 (A) (B) (C)
21 (A) (B) (C)

22 (A) (B) (C)
23 (A) (B) (C)
24 (A) (B) (C)

25 (A) (B) (C)
26 (A) (B) (C)

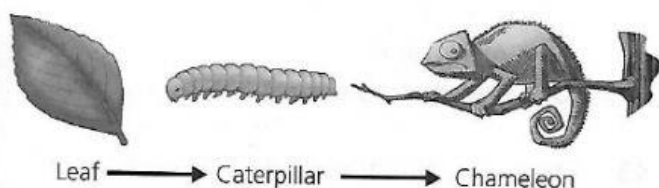
27 How living things interact with their environment is called a:

- (A) Habitat
- (B) Ecosystem
- (C) Food web

28 Fins and gills are examples of:

- (A) Chemical characteristics
- (B) Behaviour
- (C) Adaptations

Questions 29–31 refer to the diagram below.



29 Which living thing in the food chain is a producer?

- (A) Caterpillar
- (B) Leaf
- (C) Chameleon

30 Which living thing in the food chain is a herbivore?

- (A) Caterpillar
- (B) Leaf
- (C) Chameleon

31 Food chains combine to give:

- (A) Food sources
- (B) Food types
- (C) Food webs

32 A natural source of damage to ecosystems is a:

- (A) Earthquake
- (B) Deforestation
- (C) Quarrying

33 Which of the following is a function of the human body?

- (A) Decomposition
- (B) Digestion
- (C) Pollination

34 The main organ of the circulatory system is the:

- (A) Heart
- (B) Liver
- (C) Stomach

35 A device that can see a developing baby in the uterus is a:

- (A) Thermometer
- (B) Ultrasound scanner
- (C) Electron microscope

36 Which of the following BEST describes the function of flowers?

- (A) Absorbing water from the soil
- (B) Making energy with the help of the Sun's energy
- (C) Reproduction and making seeds

37 Which of the following is NOT a form of energy?

- (A) Natural gas
- (B) Solar
- (C) Electrical

27 (A) (B) (C)

28 (A) (B) (C)

29 (A) (B) (C)

30 (A) (B) (C)

31 (A) (B) (C)

32 (A) (B) (C)

33 (A) (B) (C)

34 (A) (B) (C)

35 (A) (B) (C)

36 (A) (B) (C)

37 (A) (B) (C)

38 Which of the following statements BEST describes the energy transformations in a television?

- (A) Electrical energy to light, sound and heat
- (B) Heat energy to light and sound
- (C) Electrical energy to movement

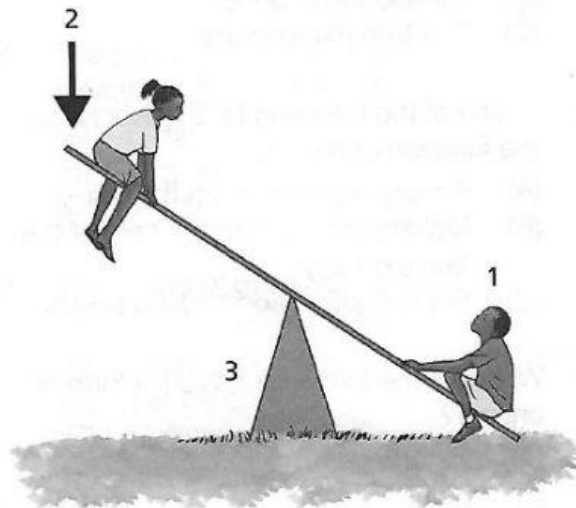
39 A natural source of light is a:

- (A) Torch
- (B) Volcano
- (C) Candle

40 When Stewart opens a drawer he is using a:

- (A) Push force
- (B) Bending force
- (C) Pull force

Questions **41–42** refer to the diagram below.



41 Which letter on the diagram represents the fulcrum?

- (A) 1
- (B) 2
- (C) 3

42 The diagram shows a simple machine called a:

- (A) Wedge
- (B) Lever
- (C) Inclined plane

43 A material that allows some light to pass through it is called:

- (A) Transparent
- (B) Opaque
- (C) Translucent

44 A ray of light that is bounced from the surface of a material is said to have been:

- (A) Reflected
- (B) Absorbed
- (C) Transmitted

45 The state of matter produced when a liquid evaporates is a:

- (A) Solid
- (B) Liquid
- (C) Gas

46 The process that changes a gas to a liquid is called:

- (A) Condensation
- (B) Evaporation
- (C) Freezing

47 Which of the following is NOT part of a production process?

- (A) Purifying
- (B) Packaging
- (C) Costing

38 (A) (B) (C)

39 (A) (B) (C)

40 (A) (B) (C)

41 (A) (B) (C)

42 (A) (B) (C)

43 (A) (B) (C)

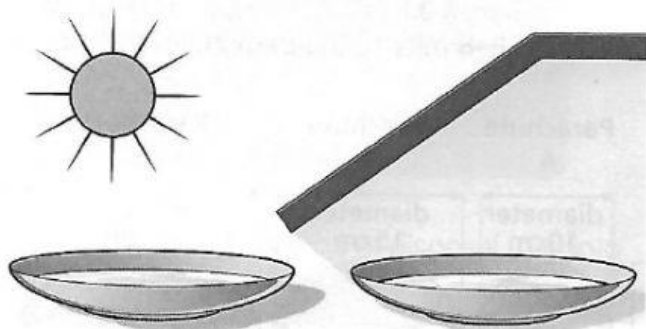
44 (A) (B) (C)

45 (A) (B) (C)

46 (A) (B) (C)

47 (A) (B) (C)

Questions 48–50 relate to the diagram below.



Amelie sets up an investigation to see whether water evaporates faster in sunlight than in the shade.

- 48 What is the independent variable in this investigation?
- (A) The size of the bowls
 - (B) Where the bowls are placed
 - (C) The volume of the water at the start
- 49 What is the dependent variable in this investigation?
- (A) The time it takes for evaporation to happen
 - (B) Where the bowls are placed
 - (C) The volume of the water at the start
- 50 Which ONE of the following is a control variable?
- (A) The size of the bowls
 - (B) Where the bowls are placed
 - (C) The time it takes for evaporation to happen

48 (A) (B) (C)

49 (A) (B) (C)

50 (A) (B) (C)