

**MR. DAVID'S**  
**SCIENCE REVIEW**  
**GRADE 2**

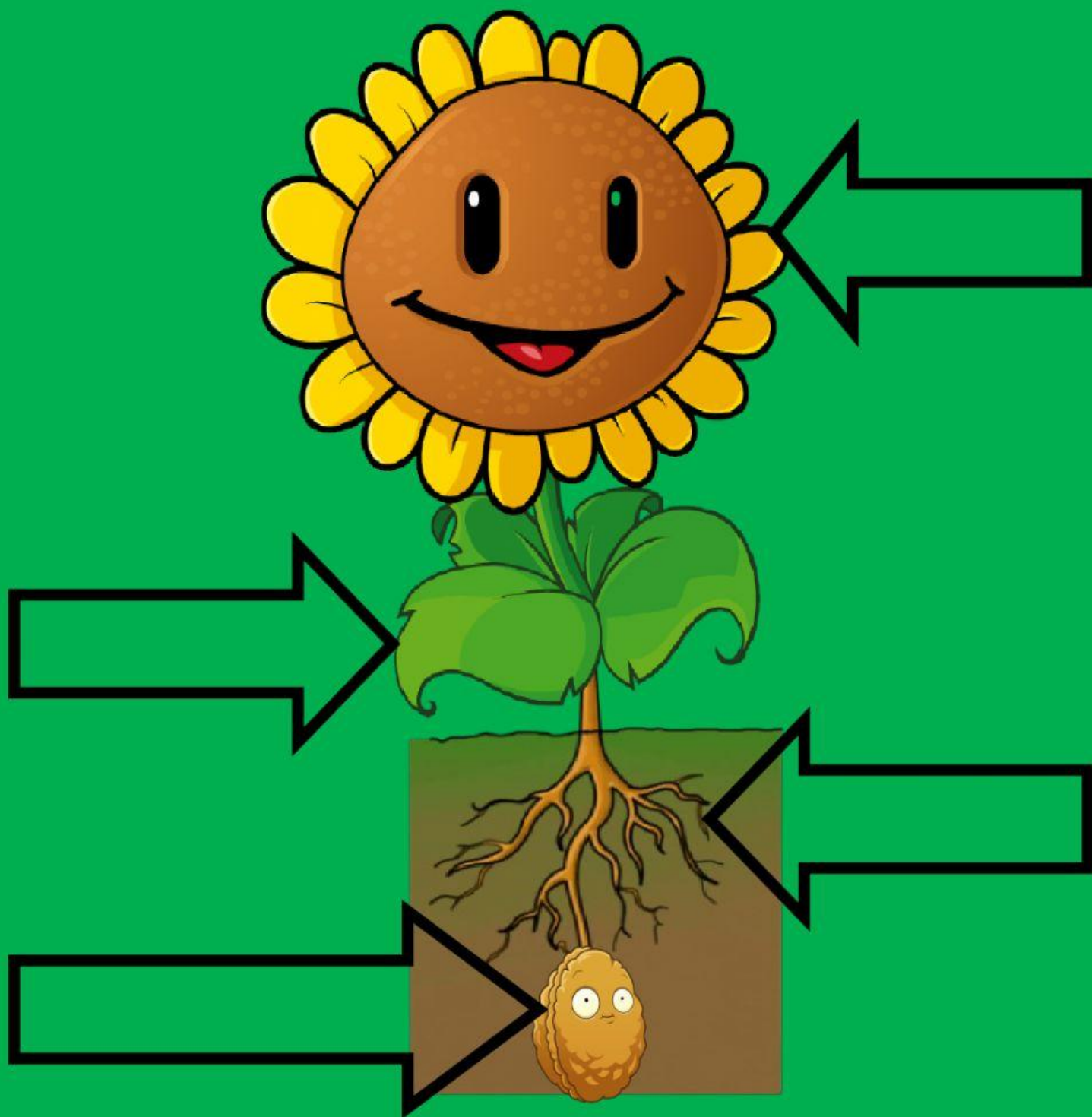


**PART 2**





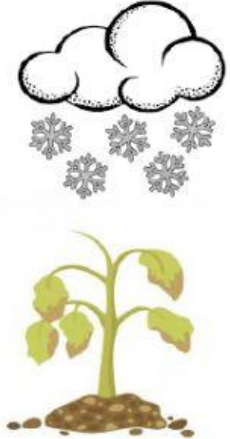
Can you remember the parts of a plant?

*stem*    *seed*    *leaf*    *flower*    *roots*





# PLANTS NEED THE RIGHT TEMPERATURE

Plant A	Plant B	Plant C
		

Read the sentences and fill in the space with A B or C.

Plant \_\_\_\_\_ cannot grow well because it is too cold.  
Snow and frost can kill some plants.

Plant \_\_\_\_\_ cannot grow well because it is too hot.  
Plants need the right amount of warmth, too much sun  
can harm them.

Plant \_\_\_\_\_ can grow well because it is not too hot or  
cold. It had the right conditions.

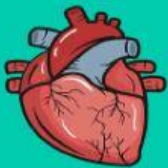
Different plants need different temperatures. Some like it  
very hot and some like it much cooler.



# BODY VOCABULARY

WHAT DO THESE BODY PARTS  
DO?

Heart



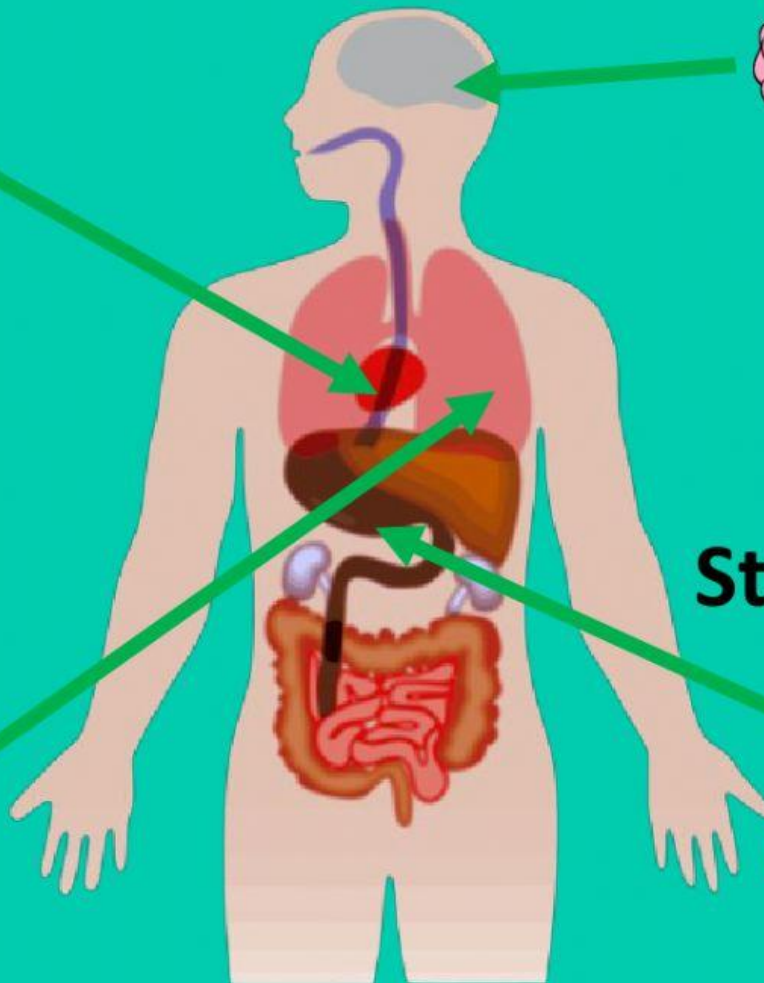
Brain



Lungs



Stomach



PULSE MUSCLE BLOOD REST

OUR HEART IS A \_\_\_\_\_ WHICH PUMPS \_\_\_\_\_ AROUND OUR BODY. WE CAN FEEL OUR HEARTBEAT, THIS IS CALLED OUR \_\_\_\_\_. WHEN WE EXERCISE OUR HEART BEATS FASTER. WHEN WE \_\_\_\_\_, OUR HEART BEATS SLOWER.



# FOSSIL FUELS

*There are many natural materials which we use, that can be found underground.*

*Metals such as iron, tin, copper and aluminum can be found in special rocks called \_\_\_\_\_.*

*Before we can use these metals, we have to \_\_\_\_\_ them from the rock. This process is called \_\_\_\_\_. This is done by \_\_\_\_\_ the ore in a giant furnace. Once the ore has melted, it can be cooled and made into metal.*

*Oil and natural gas can also be found underground. Oil is made from tiny dead \_\_\_\_\_, that have been trapped under layers of rock for thousands of years.*

*Oil can be used to make \_\_\_\_\_ or to make fuel such as petrol or diesel. We use petrol and diesel to drive cars and other machines.*

*Materials that we burn are called \_\_\_\_\_ and they release \_\_\_\_\_ into the air, which warms the planet.*

*This is called \_\_\_\_\_.*

separate heating carbon dioxide fossil fuels plastics  
plants and animals smelting ores global warming

# Shadows and light 2

straight opaque longer shorter shapes  
light details can



Light always travels in a \_\_\_\_\_ line.

A shadow is made when \_\_\_\_\_ is blocked by an opaque object.

Light cannot pass through an object that is \_\_\_\_\_.

Shadows are \_\_\_\_\_ in the morning and evening.

Shadows are \_\_\_\_\_ when the sun is high up in the sky.

Shadows are dark with no \_\_\_\_\_.

Shadows have different sizes and \_\_\_\_\_.

Objects \_\_\_\_\_ have more than one shadow if there is more than one light source.



# GLASSES

*Colored Window*



*Door*



*GLASSES*



*CURTAINS*



*Window*

