

FINAL TEST PREPARATION OF SCIENCE GRADE 6



Full Name : _____

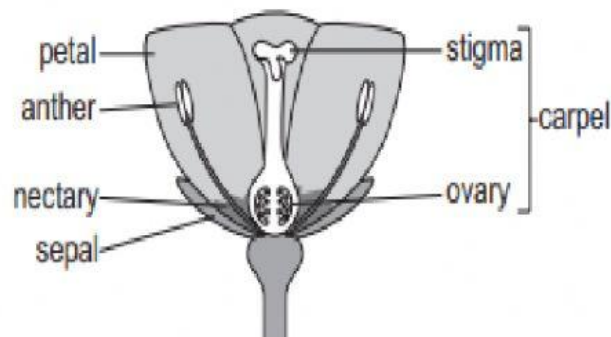
Class : _____ Attendance List : _____

Bismillahirrahmaanirrahim

CHECKPOINT 2015 PAPER 2 PART 2

Answer the questions based on the instruction given.

9 Flowers have different parts.



(a) Why do flowers have petals?

[1]

(b) Circle the part of the flower which produces pollen.

anther carpel ovary

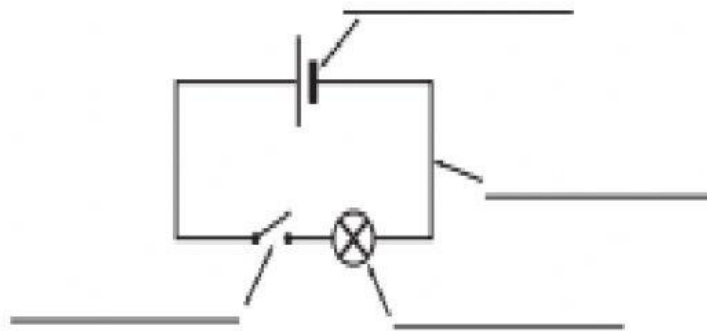
[1]

(c) Circle a female part of the flower.

nectary petal sepal stigma

[1]

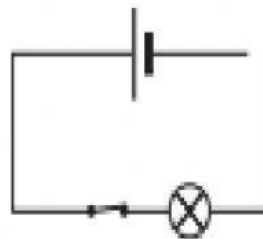
10 Rajiv finds an electric circuit diagram in a book.



(a) Label the circuit diagram.

[3]

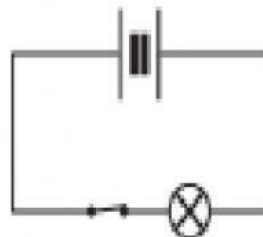
Rajiv builds this circuit.



(b) It does not work. Explain why.

[1]

(c) Rajiv now builds this circuit.

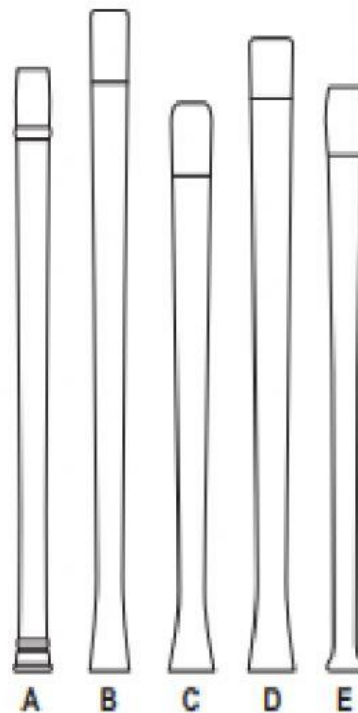


It does not work. Explain why.

[1]

11 Oliver and Carlos investigate sound.

They listen to the **pitch** made by different recorders.



(a) The recorders are different lengths.

What apparatus is used to measure the **length** of the recorders?

..... [1]

(b) Recorder **B** has the lowest pitch.

Predict which recorder will have the highest pitch.

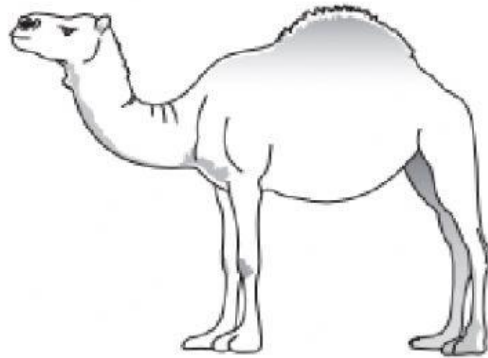
Circle the correct letter.

A C D E [1]

(c) Explain why you predicted this recorder.

.....
..... [1]

12 Using the picture below list **three** features which help this animal to adapt to its environment.



- 1 _____
 - 2 _____
 - 3 _____
- [3]

13 Scientists explore the solar system.

Which scientist was one of the **first** to believe that the Sun was at the centre of our solar system?

Tick (✓) the correct scientist.

Edwin Hubble

☐

Galileo Galilei

☐

Isaac Newton

☐

Leonardo da Vinci

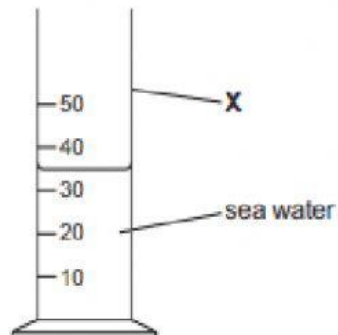
☐

[1]

14 Hassan lives by the sea.

He wants to find out how much salt is in seawater.

He measures a small volume of seawater using this apparatus.



(a) What is the name of apparatus X?

..... [1]

(b) What is the volume of seawater in apparatus X?

..... cm³ [1]

(c) Hassan then finds the mass of a clean glass dish.

What piece of apparatus should Hassan use to do this?

Circle the correct answer.

balance beaker ruler thermometer

[1]

(d) Hassan pours all of the seawater into the glass dish.

He leaves the dish of seawater in the sun for one day.

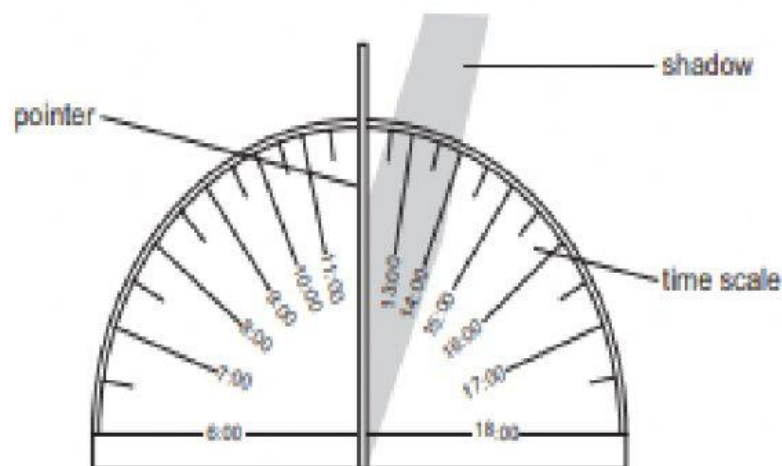
What happens to the volume of seawater in the dish?

Circle the correct answer.

decreases increases stays the same

[1]

15 Priya and Mia make a sundial.



(a) The time is 14:00.

Describe how the sundial shows this time.

.....
..... [2]

(b) Why does the shadow change during the day?

Circle the correct answer.

the Sun moves during the day

the Earth spins on its axis during the day

the Sun spins on its axis during the day

[1]

(c) Priya wants to make a sundial to show the time over 24 hours.

Mia says this is **not** possible.

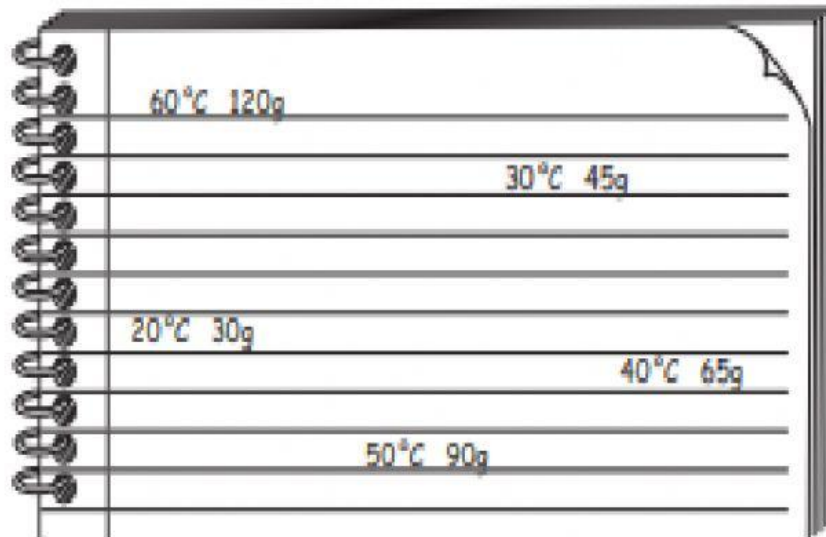
Explain why Mia is correct.

..... [1]

16 Aiko investigates how much of a solid dissolves in 100 cm³ of water.

She writes down her results.

Here is a page from her note book.



A spiral-bound notebook is shown with a table of results. The table has two columns: Temperature (°C) and Mass (g). The data is as follows:

Temperature (°C)	Mass (g)
60	120
30	45
20	30
40	65
50	90

Why is it a good idea for Aiko to put her results in a table?

[1]