

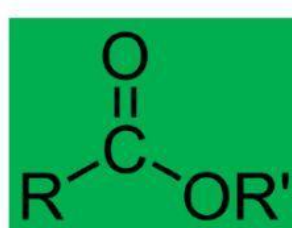
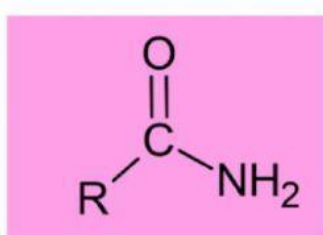
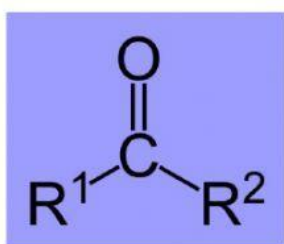
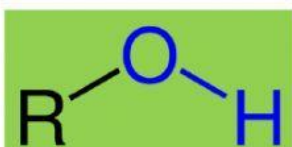
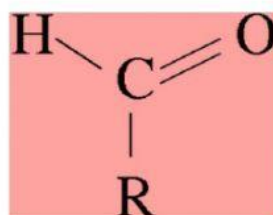
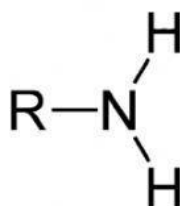
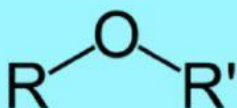
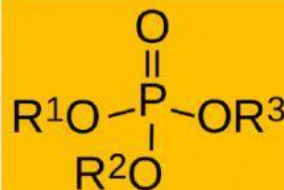
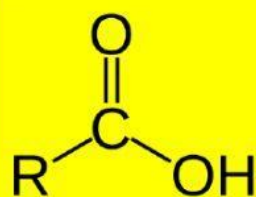
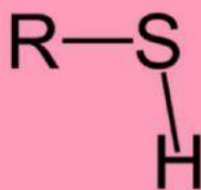
HOJA DE TRABAJO BIOLOGÍA

LOS GRUPOS FUNCIONALES EN LAS BIOMOLÉCULAS

PEN Ana Luisa de León Tello



INSTRUCCIONES: Arrastre el nombre del grupo funcional hacia la fórmula estructural que le corresponde



Tiol o sulfhidrilo

Carbonilo cetona

Amida

Alcoxi o éter

Éster

Ácido carboxílico

Carbonilo aldehído

Fosfato

Amina

Alcohol o hidroxilo



PEN ANA LUISA DE LEÓN