

IN LONDON. AT THE RAILWAY STATION.

Before you watch.

1. Read and guess. Match the sentences to the pictures.



1 If you want to travel by plane, by train or by bus, you need to buy a ticket.

3 On the day of the trip you go to the railway station.

5 You get on the train and find your seat.

2 You put your clothes into a suitcase or a rucksack.

4 You find your train on the platform.

6 You put your suitcase or rucksack on a rack or under your seat.



2. Read and answer the questions.

Miss Rabbit: Hi, Peppa. We're at the railway station now.

Peppa: Hello. Have you got a ticket?

Miss Rabbit: Yes, I have. We're going to the platform now.

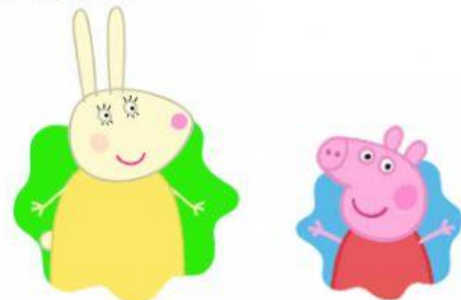
Peppa: What is the number of the train?

Miss Rabbit: The number of the train is 98.

Peppa: What is the number of my seat?

Miss Rabbit: It's 15. Well, I can see my students.

Peppa: I can see my classmates.



1. Where is Peppa now? _____
2. Will Peppa travel by train? _____
3. What is the number of the train? _____
4. What is the number of her seat? _____

3. Listen, complete and say.



Railway Ticket

Train No

Platform

Seat



4. Look and say.

Railway Ticket

Train No

Platform

Seat

Railway Ticket

Train No

Platform

Seat

Railway Ticket

Train No

Platform

Seat

A: What is the number of your train?

B: It's fast train number 96.

A: What platform is it on?

B: It's on platform two.

A: What is the number of your seat?

B: My seat is number eighteen.



6. Read and complete.

platform / train / seat / number / What

George: What is the _____ of your train, Peppa?

Peppa: It's fast _____ number 7.

George: What _____ is it on?

Peppa: It's on platform 10.

George: _____ is the number of your _____?

Peppa: My seat is number 25.

