



FLASHLIGHT (JESSIE J)

English Worksheet of song

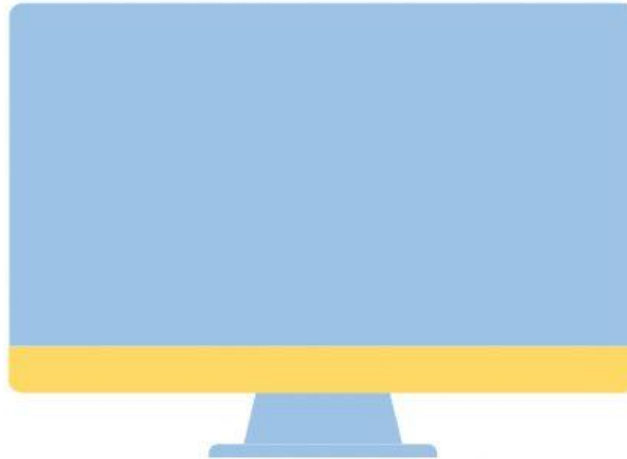
By: azizah miftahul rahim & keinanty setya melanie

XI MIPA 1



Full Name :

Class :



1. FILL IN THE MISSING WORDS AS LISTEN TO THE SONG

When tomorrow, I'll be on my own

Feeling frightened of the that I don't know

When comes

Tomorrow comes

Tomorrow comes

And the road is long

I look up to the

And in the dark I, lost hope that I fly

And I sing along, I sing along, I sing along

2. LISTEN AND CHOOSE THE CORRECT OPTION

I got all I need / have when I got you and I





I look around me, and see / sleep a sweet life
I'm stuck / stay in the dark but you're my flashlight
You're getting me, getting me through the night / day
Kick start my heart / hear when you shine it in my eyes
Can't lie, it's a sweet life / live



3. ORDER IN THE SENTENCES ACCORDING TO THE SONG

- () You're my flash light, you're my flash light
- () I'm stuck in the dark but you're my flashlight
- () Cause you're my flash light
- () You're gettin' me, gettin' me through the night



4. PLACE THE WORD IN THE CORRECT GAP

I see the _____ long beneath the _____ top
I'm not _____ when the _____ won't stop
_____ you light the _____
You light the way, you light the way



MOUNTAIN

RAIN

SHADOWS

WAY

AFRAID

CAUSE

5. ANSWER IN THE FOLLOWING QUESTIONS!

1. what is the moral of the song?

- a. always bring a flashlight
- b. companionship and strength
- c. don't be afraid of the dark
- d. tomorrow is a scary day

2. "When tomorrow comes

I'll be on my own

Feeling frightened of





The things that I don't know

When tomorrow comes"

what is the meaning of frightened?

- a. brave
- b. fearless
- c. upset
- d. afraid

3. what does the phrase "it's a sweet life" mean?

- a. the singer is happy with their life
- b. the singer's life is sweet
- c. the singer likes sweet things
- d. the singer dislikes their life

4. "And though the road is long

I look up to the sky

And in the dark I found,

I lost hope that I won't fly"

what are the opposite meaning of "long", "up", and "dark" ?

- a. short, down, dim
- b. short, down, light
- c. tall, down, light
- d. short, raise, dim

5. "You're my flashlight" is a figure of speech of?

- a. hyperbole
- b. simile
- c. personification
- d. metaphor

