

Name:

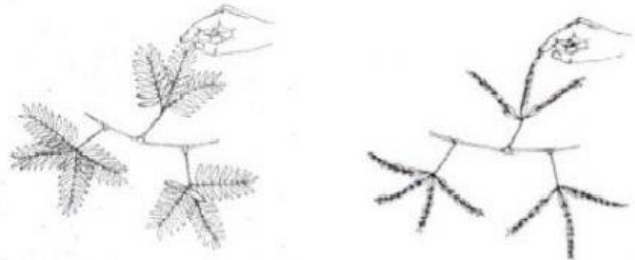
Class:

CHAPTER 2: CLASSIFICATION

TOPIC 2.1: CHARACTERISTICS OF LIVING THINGS

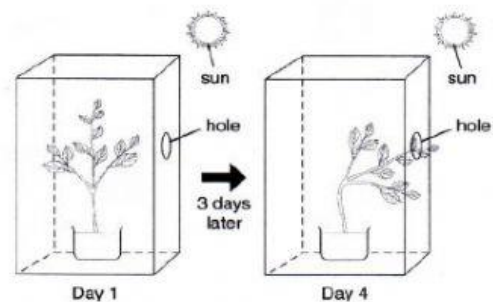
1. Figure below shows a Mimosa plant. The Mimosa plant closes its leaves when touched. This is an example of a characteristic of living things. Which of the following characteristics is correct for the above example?

- A. Living things excrete waste.
- B. Living things grow and develop.
- C. Living things respire all the time.
- D. Living things respond to stimuli.

☐

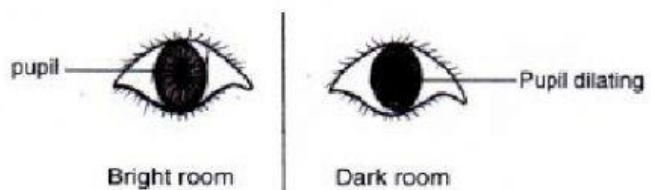
2. Study the diagram in figure below. Which of the following best describes the characteristics of the living things shown in figure above?

- A. Living things can move.
- B. Living things reproduce.
- C. Living things grow from young to adult stage.
- D. Living things need water to stay alive.

☐

3. Figure below shows how a pupil of the eye dilates when a person steps into a dark cinema. Which of the following characteristics of living things does this show?

- A. Living things are made of cells.
- B. Living things reproduce.
- C. Living things grow and develop.
- D. Living things respond to stimuli.

☐

4. Which one of the following processes involves getting rid of toxic products from the body?

- A. Absorption
- B. Digestion
- C. Excretion
- D. Nutrition

☐

5. Respiration is one of the seven characteristics of living things. Which of the following best describes respiration?

- A. Ability to produce new individuals.
- B. Reaction to changes in the environment.
- C. The way living things get energy from food.
- D. The way that all living things are made of cells.

☐

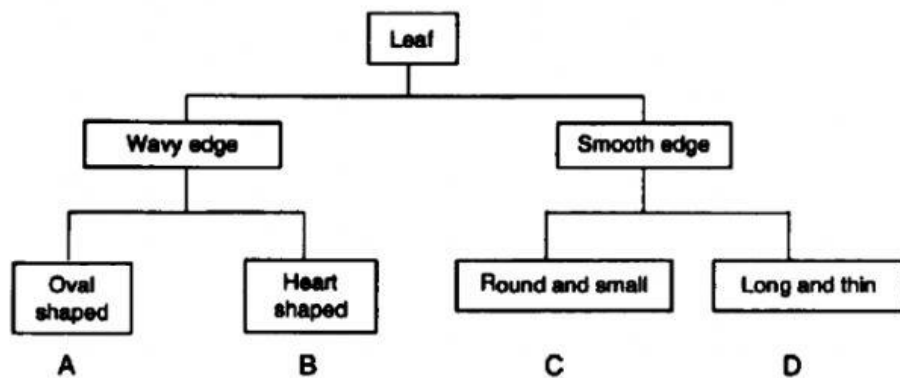
TOPIC 2.2: DIVERSITY AND CLASSIFICATION OF PLANTS AND ANIMALS

1. Which of the following features cannot be used for classifying animals?
(SPE/2011/Q15)

- A. The body temperature of the animal.
- B. The nature of the animal's skin.
- C. The eating habits of the animal.
- D. The number of animals in the group.

☐

2. Study the chart below. In which group (A, B, C or D) does the leaf in figure above belong to?


☐

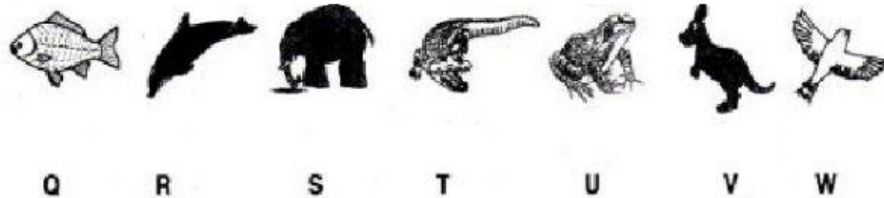
3. Diagram below shows three types of extinct animals. Which of the animals could have been warm-blooded?

- A. Dodo only.
- B. Mammoth only.
- C. Dodo and mammoth.
- D. Mammoth and dinosaur.


☐

4. A group of animals are shown in Figure below. Which animals are mammals?

- A. Q, T and U.
- B. R, T and W.
- C. R, S and V.
- D. S and V only.


☐

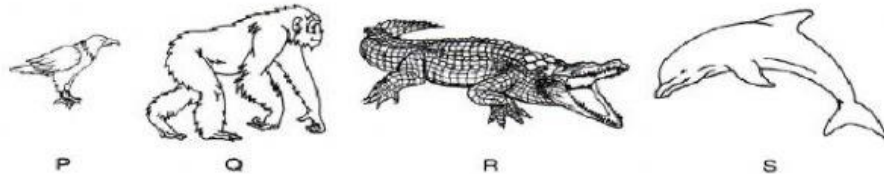
5. A newly discovered animal, Tipirex, has scales on its body and uses ONLY its lungs to breathe. What is Tipirex most likely to be classified as?

- A. An amphibian.
- B. A fish.
- C. A mammal.
- D. A reptile.

☐

6. Figure below shows four vertebrate animals. Which two vertebrate belong to the same group of animal classification?

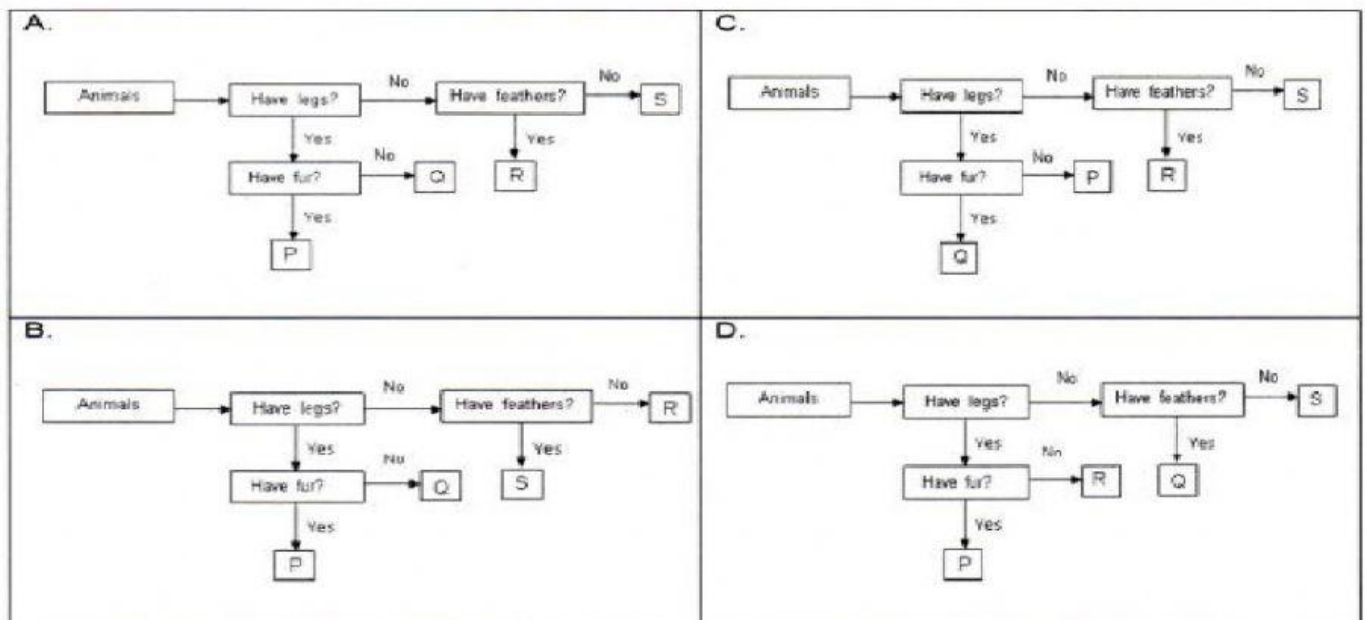
- A. P and Q.
- B. P and S.
- C. Q and R.
- D. Q and S.


☐

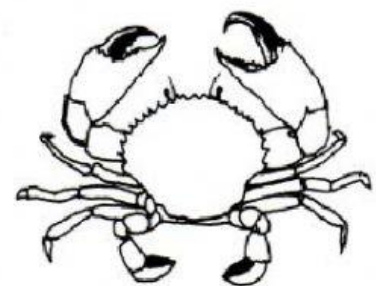
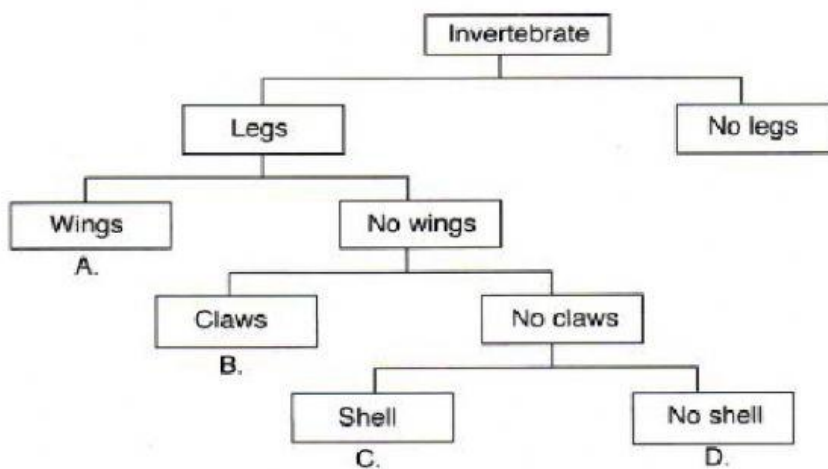
7. Table below describes the physical features of four different animals.

Animal	Legs (/orX)	Fur (/orX)	Feathers (/orX)
P	/	/	X
Q	/	X	X
R	X	X	/
S	X	X	X



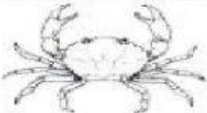


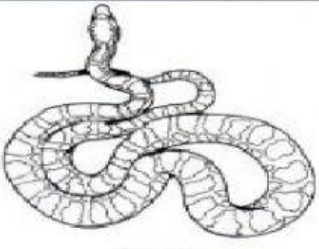
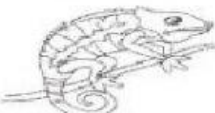





Which of the following charts best represent the animals in Table above?



8. Figure below shows an invertebrate. Identify the invertebrate in figure below by using the classification key below.
(SPE/2012/Q10)

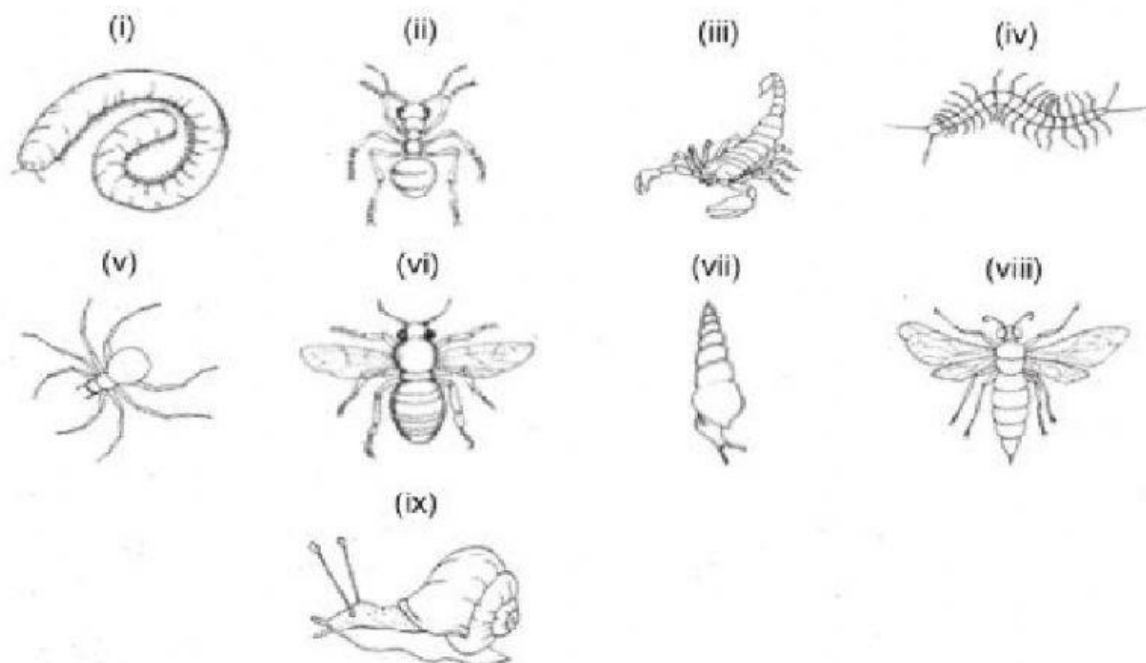


9. Which of the following consists of invertebrates only?

A.	 Ant	 Spider	 Crab
B.	 Centipede	 Earthworm	 Snake
C.	 Chameleon	 Scorpion	 Termite
D.	 Octopus	 Platypus	 Slug



10. Figure below shows organisms collected in a forest.



The organisms are grouped according to the same common characteristics listed in Table below.

Organisms	Characteristics
-----------	-----------------

Group P	<ul style="list-style-type: none"> - has a muscular foot - 1 pair of antennae - body covered by shell
Group Q	<ul style="list-style-type: none"> - 6 legs - 1 pair of antennae - Has 3 parts (head, thorax, abdomen)
Group R	<ul style="list-style-type: none"> - 8 legs - no antennae - has segmented body
Group S	<ul style="list-style-type: none"> - more than 8 legs - 1 pair of antennae - has segmented body

Which of the following organisms are classified in Group S?

- A. (i), (iv)
 B. (iii), (v)
 C. (vii), (ix)
 D. (ii), (vi), (vii)

☐

11. Aida observed organisms X, Y and Z found in her garden. She recorded her observations in table below.

Organism	Observation
X	<ul style="list-style-type: none"> • 6 legs • Body has 3 parts • 1 pair of antennae
Y	<ul style="list-style-type: none"> • 8 legs • Body has 2 parts • No antennae
Z	<ul style="list-style-type: none"> • Many legs • Body has many segmented parts • 1 pair of antennae

Which of the following is the correct classification group for organisms X, Y and Z?
 (SPE/2016/Q11)

	X	Y	Z
A.	Annelid	Insect	Molluscs
B.	Arachnid	Insect	Myriapod
C.	Insect	Arachnid	Myriapod
D.	Insect	Arachnid	Annelid

☐

12. Yanti saw an Organism X and recorded her observations below.

- The body is divided into two parts.
- It has no wings.
- It has 4 pairs of legs.

Based on the observations, what is animal X likely to be?

A.



Centipede

C.



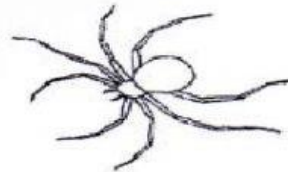
Bee

B.



Ant

D.



Spider

