

COMPLETE WITH

QUAVERS

CROTCHET

MINIM

CROTCHET
REST

A musical staff with four measures. The first two measures each contain a pair of beamed eighth notes (quavers). The third measure contains a quarter note (crotchet) with a flag. The fourth measure contains a half note (minim). Below each measure is a grey rectangular box for labeling.

A horizontal orange bar with a white arrow pointing to the right. A grey rectangular box is positioned in the middle of the bar.

A musical staff with four measures. The first measure contains a half note (minim). The second measure is empty. The third measure contains a pair of beamed eighth notes (quavers). The fourth measure contains a quarter note (crotchet). Below each measure is a grey rectangular box for labeling.

A horizontal orange bar with a white arrow pointing to the right. A grey rectangular box is positioned in the middle of the bar.

A musical staff with three measures. The first measure contains a pair of beamed eighth notes (quavers). The second measure contains a quarter note (crotchet) with a flag. The third measure contains a half note (minim). Below each measure is a grey rectangular box for labeling.

A horizontal orange bar with a white arrow pointing to the right. A grey rectangular box is positioned in the middle of the bar.

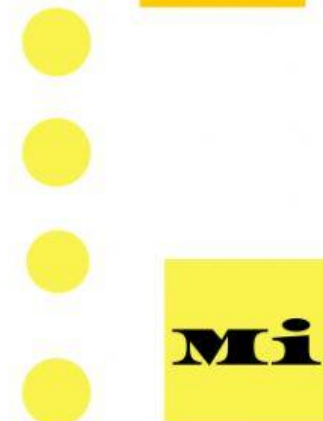
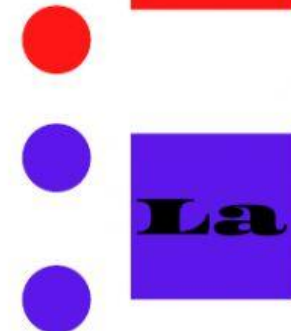
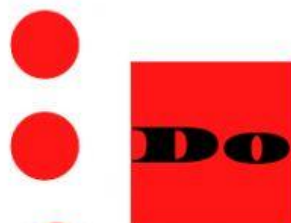
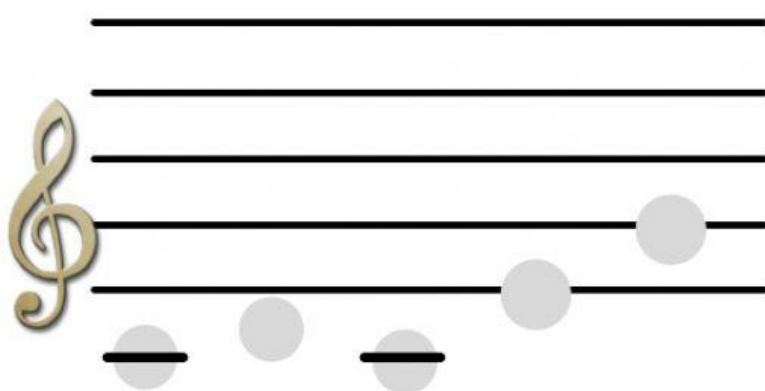
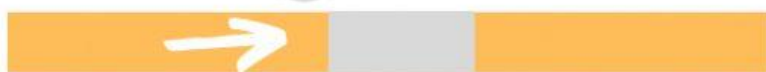
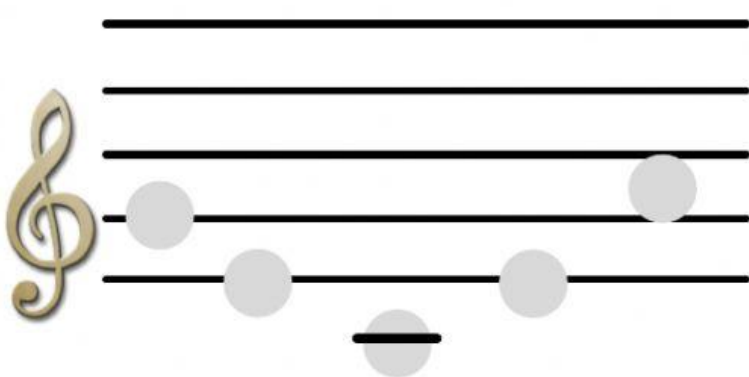
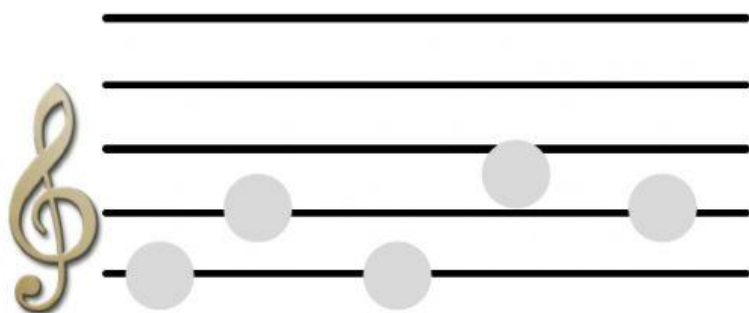
A musical staff with four measures. The first three measures each contain a pair of beamed eighth notes (quavers). The fourth measure contains a quarter note (crotchet). Below each measure is a grey rectangular box for labeling.

A horizontal orange bar with a white arrow pointing to the right. A grey rectangular box is positioned in the middle of the bar.

**Drag the rhythm
under the staves**



DRAG THE COLOURS
TO THE NOTES



Drag the music under the staves

