

### Cell Organelle Interactive Matching Activity

**Directions:** Drag and drop the term next to it's correct description.

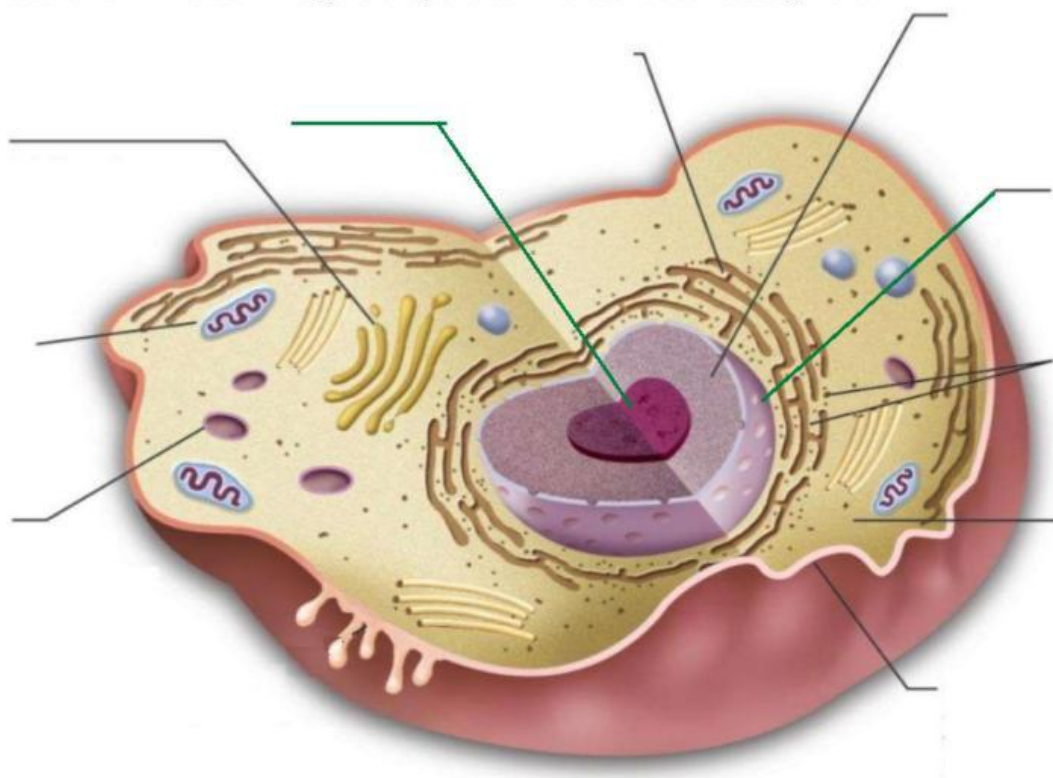
1. Organelle that contains digestive enzymes and breaks down old or worn-out cell parts. \_\_\_\_\_
2. Organelle that makes proteins, attaches to the rough endoplasmic reticulum. \_\_\_\_\_
3. Photosynthesis takes place in this organelle. \_\_\_\_\_
4. This organelle is like the post office, it packages sorts and ships proteins. \_\_\_\_\_
6. This organelle stores food, water, and waste materials in the cell. \_\_\_\_\_
7. Jelly like substance that contains all of the other organelles. \_\_\_\_\_
8. A tough rigid structure that gives support to plant cells. \_\_\_\_\_
9. This organelle protects and determines what comes in and out of a cell. \_\_\_\_\_
10. This organelle makes and stores DNA and directs protein synthesis and cell activities. \_\_\_\_\_
11. This organelle helps to finish production of proteins, contains folded membranes with 'bumps' on it. \_\_\_\_\_ referred to as rough
12. This organelle produces lipids and hormones. \_\_\_\_\_ referred to as smooth
13. This organelle is the power-house of the cell, it breaks sugar to produce energy in the form of ATP. \_\_\_\_\_
14. Gel-like substance inside of plant cells that absorbs sunlight energy. \_\_\_\_\_

|             |                 |           |               |              |              |             |
|-------------|-----------------|-----------|---------------|--------------|--------------|-------------|
| Cytoplasm   | Lysosomes       | Ribosomes | Cell membrane | Cell wall    | Chloroplasts | Rough E.R.  |
| Smooth E.R. | Golgi Apparatus | Vacuoles  |               | Mitochondria | Nucleus      | Chlorophyll |

**Directions:** Select whether the following organelles are found in Plant, Animal, or Both types of cells.

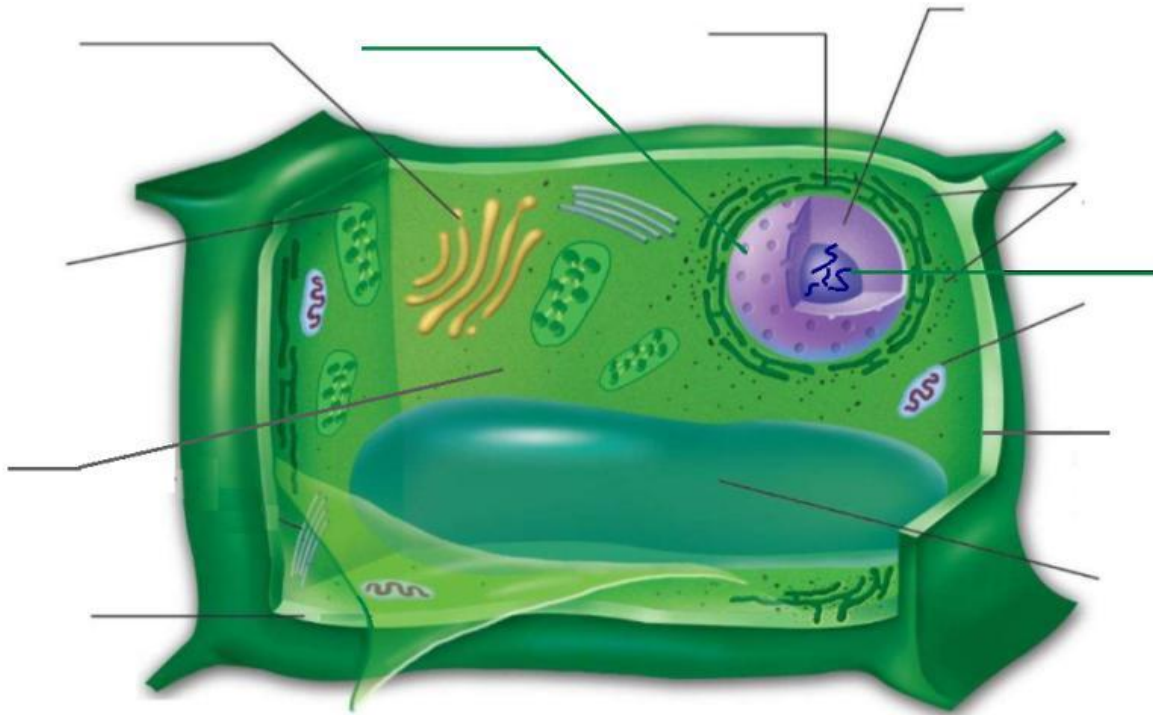
|               |                 |              |
|---------------|-----------------|--------------|
| Nucleus       | Mitochondria    | Chlorophyll  |
| Cytoplasm     | Ribosomes       | Lysosomes    |
| Cell membrane | Cell wall       | Chloroplasts |
| Rough E.R.    | Golgi Apparatus | Smooth E.R.  |
| Vacuoles      |                 |              |

Directions for Animal Cell: Drag and drop the term next to it's correct organelle.



|                 |                  |               |                       |             |
|-----------------|------------------|---------------|-----------------------|-------------|
| Cytoplasm       | Vacuole          | Cell membrane | Endoplasmic reticulum | Ribosomes   |
| Golgi apparatus | Nuclear membrane | Mitochondria  | Nucleus               | Chromosomes |

Directions for Plant cell: Drag and drop the term next to it's correct organelle.



|                  |             |               |                       |           |
|------------------|-------------|---------------|-----------------------|-----------|
| Cytoplasm        | Vacuole     | Cell membrane | Endoplasmic reticulum | Ribosomes |
| Golgi apparatus  | Chloroplast | Mitochondria  | Nucleus               | Cell wall |
| Nuclear membrane | Chromosomes |               |                       |           |