



**Multiple choices: Choose the correct answer.**

\_\_\_\_\_1 Which of the following is not the common getaway drugs?

- a. Cocaine
- b. Tobacco
- c. Marijuana
- d. Alcohol

\_\_\_\_\_2 Two large growing causes of death?

- a. AIDS & alcohol
- b. Tobacco & alcohol
- c. Communicable diseases & tobacco
- d. HIVs & tobacco

\_\_\_\_\_3 There are 4 to 7 types of drugs and each category can affect human behavior. They are classified by?

- a. Affect
- b. Effect
- c. Strong
- d. Implications

\_\_\_\_\_4 A virus that can be found in the nasal discharge, saliva or sputum of the infected person.

- a. H5n1
- b. H1n1
- c. Cholera
- d. HIV

\_\_\_\_\_5 Way on how an infected person spread a virus?

- a. Touching
- b. Sharing
- c. Speaking
- d. Eating

\_\_\_\_\_6 It can cause diseases in human bodies from ingested food contains toxins.

- a. Water pollution
- b. Air pollution
- c. Noise pollution
- d. Soil pollution

\_\_\_\_\_7 What is substance abuse?

- a. A neuropsychiatric disorder characterized by a recurring desire to continue taking the drug despite harmful consequences.
- b. They are not meant to be used and could be harmful to you or others around you.
- c. The purposeful incorrect use of drugs or the use of an illegal drug.
- d. It is an incorrect use of drugs.

\_\_\_\_\_8 Which of the following is hallucinogenic drug?

- a. Ketamine
- b. Cocaine
- c. Alcohol
- d. Ecstasy

\_\_\_\_\_9 Are sudden events caused by nature?

- a. Storm
- b. Storm surge
- c. Natural disaster
- d. Drought

\_\_\_\_\_10 What is Cholera?

- a. Waterydiarrheal disease
- b. Salmonella Paratyphi bacteria
- c. Escherichia coli virus
- d. Clostridium botulinum

\_\_\_\_\_11 People that can be highly risk to have severe complications cause by avian influenza?

- a. Children
- b. Young teens and adult
- c. Babies
- d. Elderly and children

\_\_\_\_\_12 Is the infection that inflames the air sacs, either one or both lungs.

- a. Typhoid fever
- b. HIV
- c. Avian influenza
- d. Swine flu

\_\_\_\_\_13 How to prepare and prevent upcoming disaster.

1

2

3

4

Get ready	Learn about the history of the place where you live	Be prepared	Share and join in
-----------	---	-------------	-------------------

- a. 1, 2, 3, 4
- b. 3, 1, 4, 2
- c. 2, 4, 1, 3
- d. 4, 3, 2, 1

\_\_\_\_\_14 Pathogens spread and infect people through?

- a. Skin
- b. Food
- c. Air
- d. Sneezing

\_\_\_\_\_15 It is a prolonged dry period in the natural climate cycle that can occur anywhere in the world.

- a. Storm
- b. Drought
- c. Flood
- d. Landslide

\_\_\_\_\_16 What is splenomegaly?

- a. Enlargement of lungs
- b. Enlargement of liver
- c. Enlargement of kidney
- d. Enlargement of spleen

\_\_\_\_\_17 Is a type of influenza virus that causes a highly infectious, severe respiratory disease?

- a. Influenza A
- b. Avian flu
- c. Cholera
- d. AIDS

\_\_\_\_\_18 Which of the following is one of the effects of environmental problem to our mind?

- a. Neurosis
- b. Epidemics
- c. Gastro-intestinal illness
- d. Respiratory disease

\_\_\_\_\_19 This infection is often mild or without symptoms, but can sometimes be severe and life-threatening?

- a. Malaria

- b. Salmonella paratyphi bacteria
- c. Cholera
- d. Swine flu

\_\_\_\_\_20 It is a series of huge waves caused by earthquakes in the sea or ocean.

- a. Storm surge
- b. Landslide
- c. Earthquake
- d. Tsunami

\_\_\_\_\_21 Any substance used to cure sicknesses and disease?

- a. Medication
- b. Medicine
- c. Substances
- d. First aid

\_\_\_\_\_22 People who frequently have a strong desire to use a drug or substance are \_\_\_\_\_.

- a. Psychologically addicted
- b. Mental illness disorder
- c. Being stressed
- d. Neurosis

\_\_\_\_\_23 A class of drugs that speed up messages travelling between the brain and body?

- a. Depressants
- b. Hallucinogenic drugs
- c. Inhalant
- d. Stimulant

\_\_\_\_\_24 It is a type of influenza that occur occasionally, but it is difficult to transmit the infection from person to person.

- a. Swine flu
- b. Typhoid fever
- c. Cholera
- d. Avian flu

\_\_\_\_\_25 What is the role of people and animals in the factors involved the spread of communicable diseases?

- a. Spreader
- b. Carrier
- c. Receiver
- d. Host

- \_\_\_\_\_26 Which is not a drug stimulant?  
 a. Crystal meth  
 b. Cocaine  
 c. Heroin  
 d. Ketamine
- \_\_\_\_\_27 It is a heavy sea wave that moves toward the shore. It is an abnormal rise of water level during a storm.  
 a. Tsunami  
 b. Typhoon  
 c. Storm surge  
 d. Landslide
- \_\_\_\_\_28 What is the name of the illness that cause by the bacteria called Salmonella Paratyphi bacteria?  
 a. Cholera  
 b. HIV-1  
 c. Neurosis  
 d. Typhoid fever

- \_\_\_\_\_29 Cholera is the illness that caused by consuming contaminated water or food. What is the name of that bacteria?  
 a. Waterydiarrheal disease  
 b. Salmonella Paratyphi bacteria  
 c. Vibrio cholerae  
 d. Clostridium botulinum

- \_\_\_\_\_30 Arrange the following according to its wind speed.

1                      2                      3                      4                      5

Tropical storm	Depression	Super typhoon	Severe Storm	Typhoon
----------------	------------	---------------	--------------	---------

- a. 2, 1, 4, 3, 5  
 b. 1, 4, 3, 5, 2  
 c. 3, 5, 4, 1, 2  
 d. 2, 1, 4, 5, 3

Enumeration: Give the correct answer.

1. Define BRAT  
 a. \_\_\_\_\_  
 b. \_\_\_\_\_  
 c. \_\_\_\_\_  
 d. \_\_\_\_\_

2. What is hepatomegaly?  
 a. \_\_\_\_\_
3. What is inside the emergency kit?  
 a. \_\_\_\_\_  
 b. \_\_\_\_\_  
 c. \_\_\_\_\_
4. Side effects of drugs in our body  
 a. \_\_\_\_\_  
 b. \_\_\_\_\_  
 c. \_\_\_\_\_
5. 2 types of storms  
 a. \_\_\_\_\_  
 b. \_\_\_\_\_
6. Symptoms of H1N1 Influenza can be recovered naturally in how many days?  
 a. \_\_\_\_\_
7. 4 types of earthquakes  
 a. \_\_\_\_\_  
 b. \_\_\_\_\_  
 c. \_\_\_\_\_  
 d. \_\_\_\_\_
8. Types of faults of earthquake  
 a. \_\_\_\_\_  
 b. \_\_\_\_\_  
 c. \_\_\_\_\_
9. Three categories of natural disaster  
 a. \_\_\_\_\_  
 b. \_\_\_\_\_  
 c. \_\_\_\_\_
10. Two severe complications of patient who have Avian flu  
 a. \_\_\_\_\_  
 b. \_\_\_\_\_
11. It is a bacterium that can be found in the stool of the infected people or animals  
 a. \_\_\_\_\_



12. Side effects of drug misuse into our mind

- a. \_\_\_\_\_
- \_\_\_\_\_
- b. \_\_\_\_\_
- \_\_\_\_\_

13. What would be like in the eye of the tropical cyclone?

- a. \_\_\_\_\_
- b. \_\_\_\_\_

14. Types of tropical cyclone (weak to strongest)

- a. \_\_\_\_\_
- b. \_\_\_\_\_
- c. \_\_\_\_\_
- d. \_\_\_\_\_
- e. \_\_\_\_\_

15. 2 types of Phenomenon/Disaster

- a. \_\_\_\_\_
- b. \_\_\_\_\_

3. The estimated size of the eye of the



4. Wind speed of a super typhoon



5. It can cause diseases in human bodies from ingested food contains toxins.

- a. \_\_\_\_\_

6. How Influenza A virus can be spread directly to other person

- a. \_\_\_\_\_
- b. \_\_\_\_\_
- c. \_\_\_\_\_

7. Write down the 4 main causes of tsunami



- a. \_\_\_\_\_
- b. \_\_\_\_\_
- c. \_\_\_\_\_
- d. \_\_\_\_\_

## Part II

1. Kinds of violent weather

- a. \_\_\_\_\_
- b. \_\_\_\_\_
- c. \_\_\_\_\_
- d. \_\_\_\_\_
- e. \_\_\_\_\_

2. Effects of natural disasters in people's mind



- a. \_\_\_\_\_
- b. \_\_\_\_\_
- c. \_\_\_\_\_

8. Identify the picture below

a. \_\_\_\_\_



9. Identify the picture below

a. \_\_\_\_\_



10. Identify the picture below

a. \_\_\_\_\_



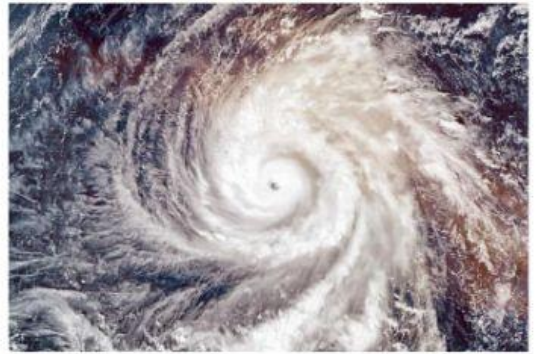
11. Identify the picture below

a. \_\_\_\_\_



12. Identify the picture below

a. \_\_\_\_\_



13. Identify the picture below

a. \_\_\_\_\_



14. Identify the picture below

a. \_\_\_\_\_



15. Causes of flood

a. \_\_\_\_\_

b. \_\_\_\_\_

c. \_\_\_\_\_

d. \_\_\_\_\_

e. \_\_\_\_\_



16. A large amount of water overflowing lands.

a. \_\_\_\_\_

17. Substances that reduce arousal and stimulation

a. \_\_\_\_\_

18. A virus that can be found in the nasal discharge, saliva or sputum of the infected person.

a. \_\_\_\_\_

19. Is a patterned use of a substance (drug) in which the user consumes the substance in amounts

a. \_\_\_\_\_

20. Collapse of the Earth's surface in the steep slope areas of mountainside.

a. \_\_\_\_\_

21. Reasons and cause of people using drugs

a. \_\_\_\_\_

\_\_\_\_\_

b. \_\_\_\_\_

\_\_\_\_\_

c. \_\_\_\_\_

\_\_\_\_\_

d. \_\_\_\_\_

\_\_\_\_\_

e. \_\_\_\_\_

\_\_\_\_\_

f. \_\_\_\_\_

\_\_\_\_\_

22. It is a kind of pollution that can cause tinnitus and deafness.

a. \_\_\_\_\_

23. Write down the characteristics of a sick bird to avoid being consumed and spread the virus



a. \_\_\_\_\_

b. \_\_\_\_\_

c. \_\_\_\_\_

d. \_\_\_\_\_

e. \_\_\_\_\_

24. Protective gears that supposed to wear to avoid contact with infected birds

a. \_\_\_\_\_

b. \_\_\_\_\_

c. \_\_\_\_\_

d. \_\_\_\_\_

25. In the early phase of cholera, patients are required to intake solution to avoid dehydration.

a. \_\_\_\_\_

26. Its negative effects can cause humans to get infected with epidemics from contaminated foods taken by animals or insects.

a. \_\_\_\_\_

27. It is a contaminant in the air that can cause respiratory illness and cardiovascular disease.

a. \_\_\_\_\_

28. Its negative effect can cause diarrhea and dysentery.

a. \_\_\_\_\_

29. What will be the consequences of the garbage in our environment?

a. \_\_\_\_\_  
\_\_\_\_\_  
\_\_\_\_\_

30. What will be the consequences of the soil pollution in our environment?

a. \_\_\_\_\_  
\_\_\_\_\_  
\_\_\_\_\_