

Part I

It's inventory time at the fruit and vegetable store. Help by answering the questions, using ratios



1. The ratio of tomatoes to red apples is 2:5. If there are 96 tomatoes, how many red apples are there?

2. The ratio of berries to oranges is 12:7. If there are 119 oranges, how many berries are there?

3. The ratio of potatoes to turnips is 3:5. If there are 573 potatoes, how many turnips are there?

4. The ratio of pears to green apples is 7:3. If there are 159 green apples, how many pears are there? _____
5. The ratio of bananas to melons is 25:4. If there are 200 bananas, how many melons are there? _____
6. The ratio of blueberries to strawberries is 2:7. If there are 147 strawberries, how many blueberries are there? _____

Part II

1. Robin leaves \$ 1,245,500 behind. According to his wish, the money is to be divided between his son and daughter in the ratio 3 : 2.
 - a. What's the fraction received by his son? _____
 - b. Find the sum received by his son: _____
2. \$355 is divided between Laura and Joan in the ratio 2:3. How much did Joan get?

The fraction that Joan gets is -----

Then \div =

And \times =

Hence, Joan gets \$_____

3. A math club has 36 members of which 20 are male and the rest are female. What is the ratio of male to female members? Simplify if possible.

4. In an orchard, there are 69 trees. Of these, 27 are orange trees, 14 are cherry trees and the rest are apple trees. What is the ratio of apple trees to cherry trees? Simplify if possible.

5. A company bought 117 tickets for their employees to go to an amusement park. They are distributing the tickets among the sales and production departments in a ratio 4:5. How many tickets does each department get?

Sales department →

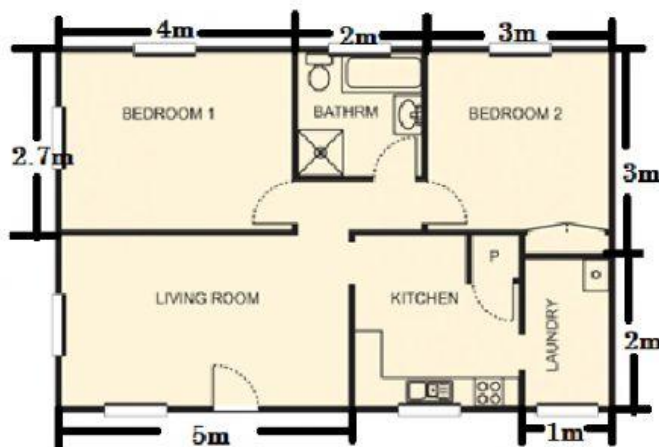
Production department →

6. According to a recipe for a nut cake, the ideal ratio of nuts in the cake to the nuts in the frosting is 4: 6. Anna has 120 nuts in total.

- a. How many nuts should go in the cake?
- b. How many nuts should go in the frosting?



Part III



1. When architects design houses, it would be ridiculous to draw a full-size plan. Instead, they draw a smaller diagram to **scale**.

If the ratio of the drawing dimensions to the real dimensions is 1:100

- a. What are the dimensions of the Bedroom 2 in the drawing?
- b. What are the dimensions of the Kitchen in the drawing?
- c. What are the dimensions of the Laundry in the drawing?