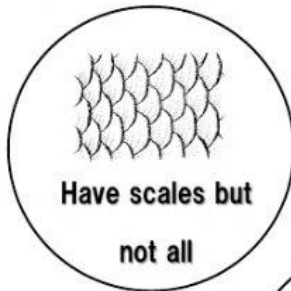


Name: \_\_\_\_\_

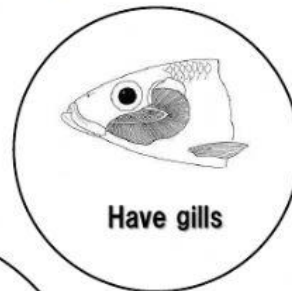
Date: \_\_\_\_\_

Class: \_\_\_\_\_

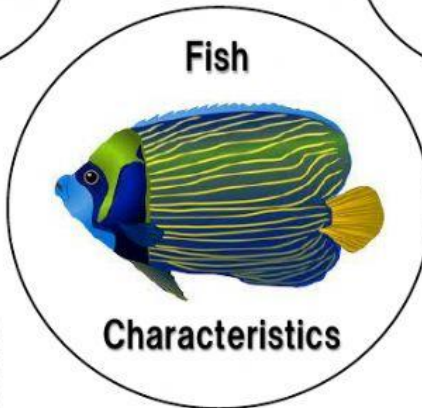
# Fish



Have scales but  
not all



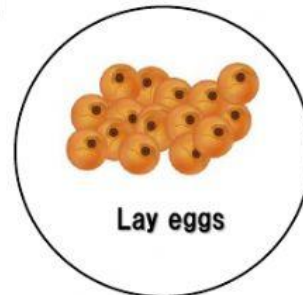
Have gills



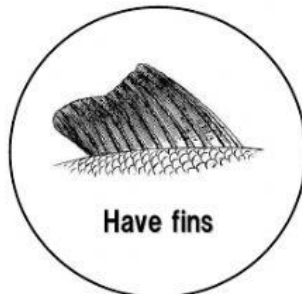
Characteristics



Have backbone



Lay eggs



Have fins

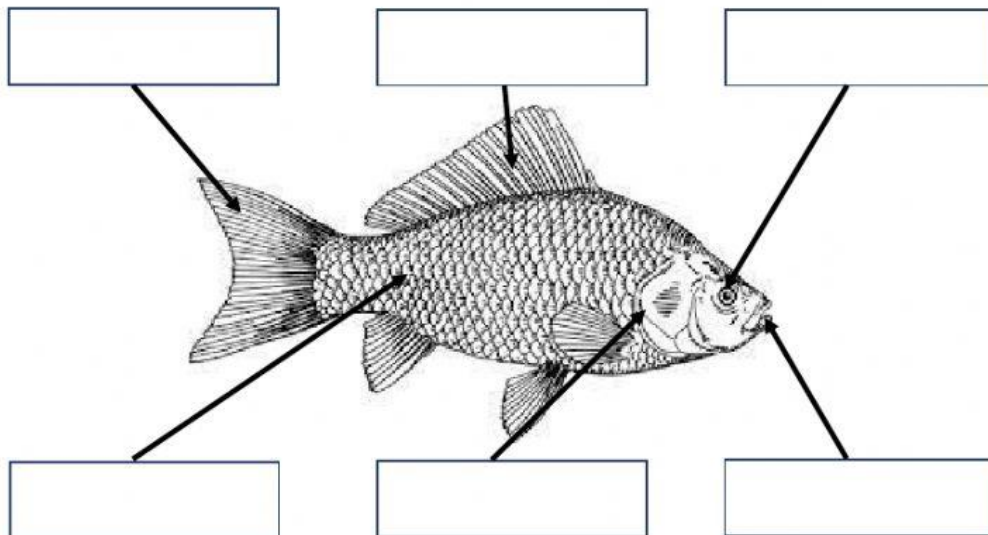


## • FUN FACT

- Jellyfish, Starfish and Crayfish are not really fish. Even though fish is in their name, jellyfish is classified as an invertebrate, a starfish is an echinoderm and a Crayfish is actually a crustacean.

- Label the parts of the fish correctly.

fins	eye	mouth
gill cover	tail	scales



- Direction: Carefully read each question and choose the best answer.

1. What is a fish?

- |   |
|---|
| A warm-blooded animal with a hard shell.        |
| A cold-blooded animal with fins.                |
| A warm-blooded animal with wings                |
| A cold-blooded animal that is covered with fur. |

2. Why isn't Dolphin a fish?

Dolphin do not have fins.
---------------------------

Dolphin do not live in water.
-------------------------------

Dolphin do not have gills.
----------------------------

Dolphin is not cold-blooded.
------------------------------

3. Fish are great swimmers because of their\_\_\_\_\_.

gills
-------

fins
------

scales
--------

mouth
-------

4. Name 2 fish that give birth to its young.


5. Which part of the fish that helps them to get oxygen they need in the water?

gills
-------

fins
------

scales
--------

mouth
-------