

HUMAN REPRODUCTION

FEMALE REPRODUCTIVE SYSTEM

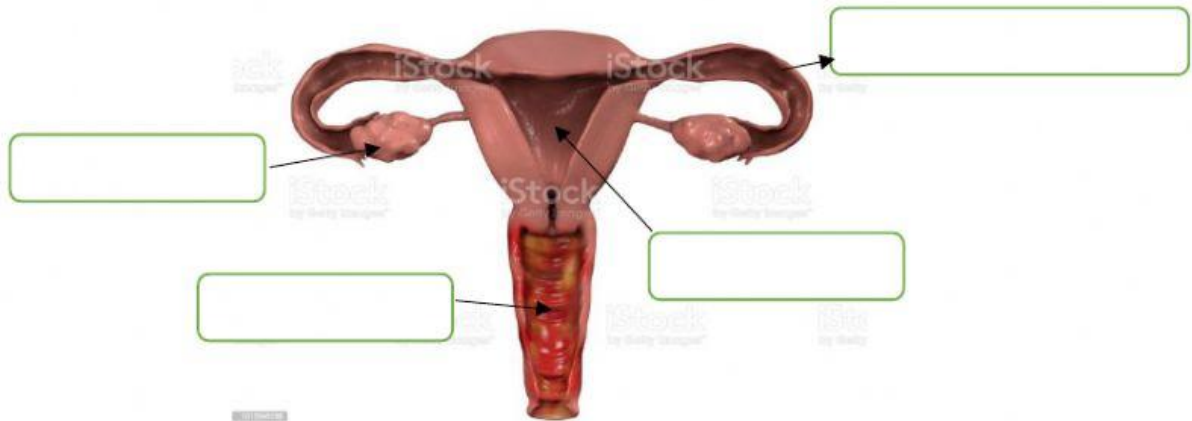
LABEL THE ORGANS

OVARIES

FALLOPIAN TUBES

UTERUS

VAGINA



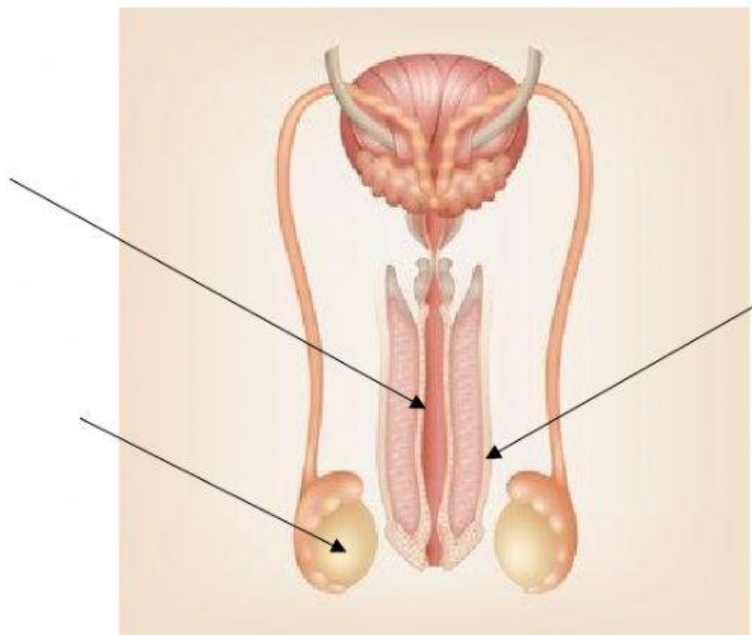
MALE REPRODUCTIVE SYSTEM

LABEL THE ORGANS

TESTICLES

URETHRA

PENIS



COMPLETE THE STAGES OF REPRODUCTION

- 1.- An **egg** is fertilised by _____
- 2.- The egg divides again and again and becomes attached to the wall of the _____
- 3.- An **embryo** develops. At six weeks old it is about the size of a small seed. Nutrients and oxygen travel from the mother to the embryo along the _____
- 4.- The embryo becomes _____ at nine weeks. It is about the size of an olive. It has arms and legs and it starts to have a face.
- 5.- At three months it has its _____
- 6.-At _____ months it is **ready** to be born.
- 7.- The baby moves head first down the vagina and comes out. The umbilical cord is cut and becomes the _____.