

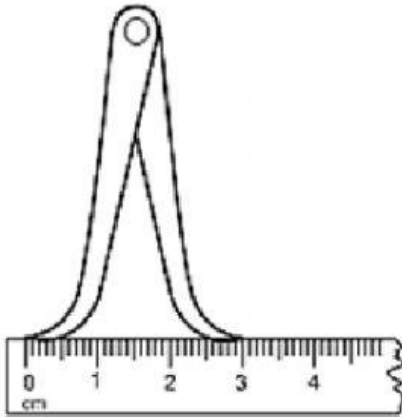
Name: .....

Date: .....

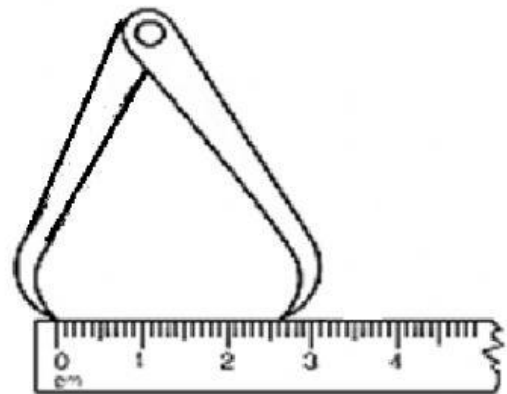
Year: .....

**EXERCISE 1.8: MEASURING LENGTH (PART 2)**

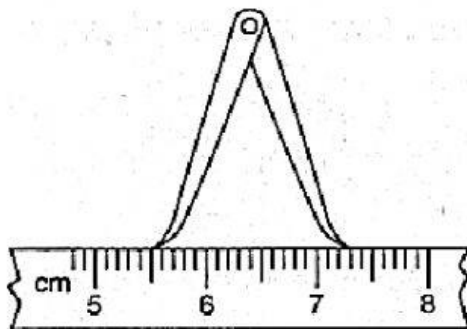
1. Measure the length used by the calipers below.



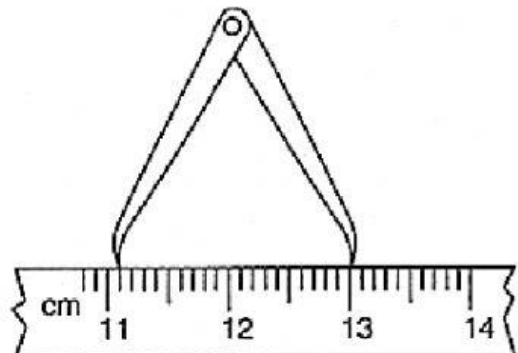
a) Answer: .....



b) Answer: .....

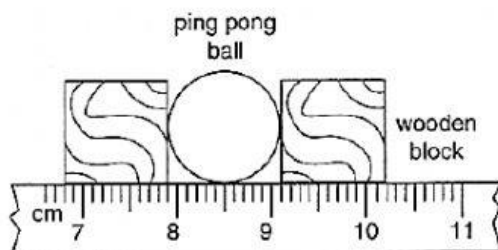


c) Answer: .....

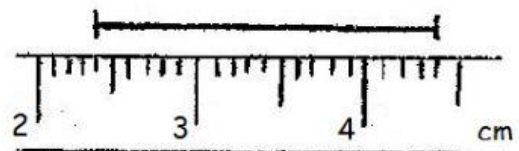


d) Answer: .....

2. Read and write the measurements shown below



a) Diameter of a ping pong ball: .....

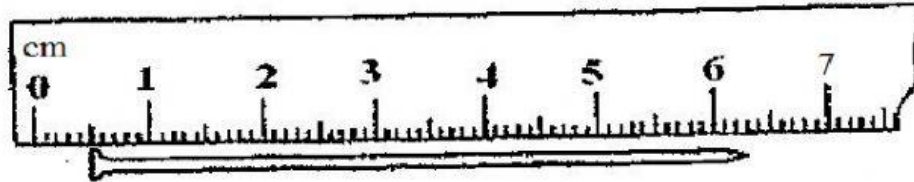


b) Answer: .....

3. A teacher asks Nazmi to measure the width of the science laboratory. Which one of the following instruments should he choose?

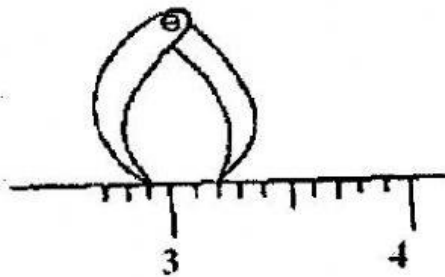
A. A measuring tape  
B. A pair of dividers  
C. A pair of external calipers  
D. A 30 cm ruler

4. The length of the nail in the figure below is .....



A. 5.6 cm  
B. 5.8 cm  
C. 6.3 cm  
D. 6.8 cm

5. The figure shown below shows the instrument used to measure the external diameter of a beaker. The diameter is .....



A. 0.3 cm  
B. 2.9 cm  
C. 3.0 cm  
D. 3.2 cm

6. The diameter of a ping pong ball can be measured most accurately by using .....

A. a measuring tape  
B. internal calipers and ruler  
C. a ruler  
D. external calipers and ruler

7. In the figure below, which is the correct position to place the eye so that you can make the most accurate reading of length?

