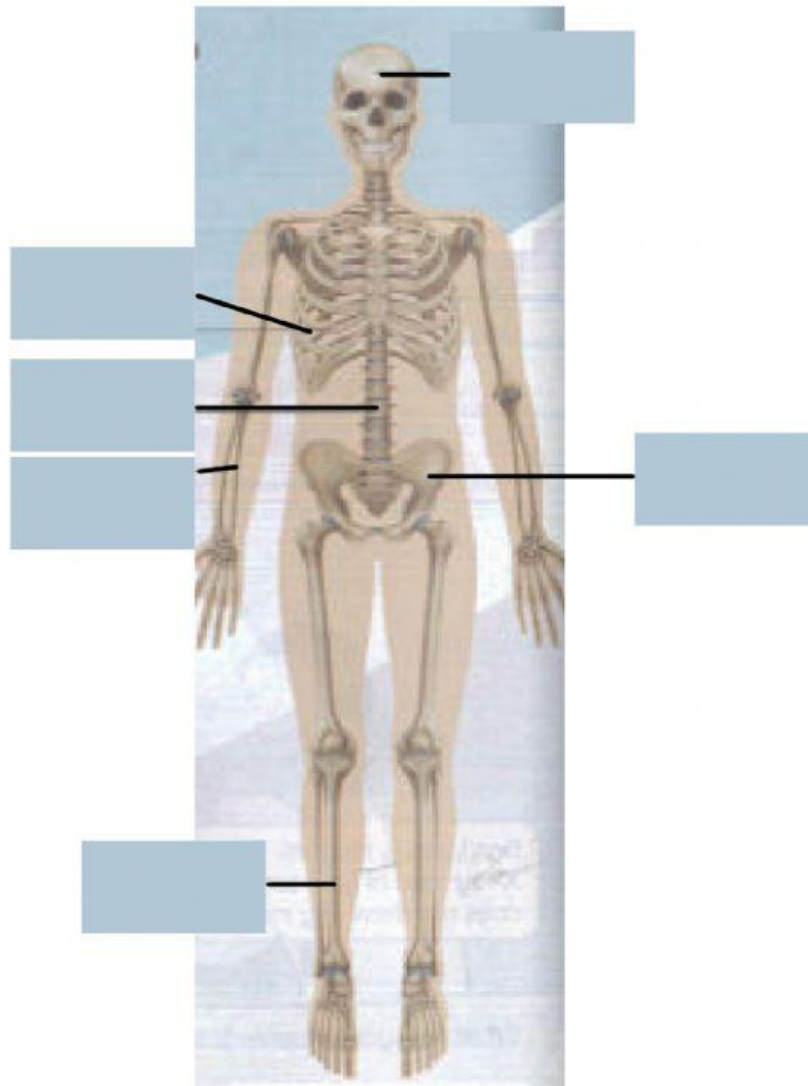




# Humans

Fill in the box with the correct answer.

## Human Skeletal System



skull

backbone

pelvis

hand bone

rib

leg bone



# Humans

Match the the following with the correct answer.

## Function of Skeletal System

Skull
Ribs
Backbone
The bones of hands and legs
Scapula
Pelvis

Support for the body
Support and movement
Protect our brain
Protect the internal organs such as lung and heart.
Protect organs such as rectum, bladder and uterus
Control shoulder movement

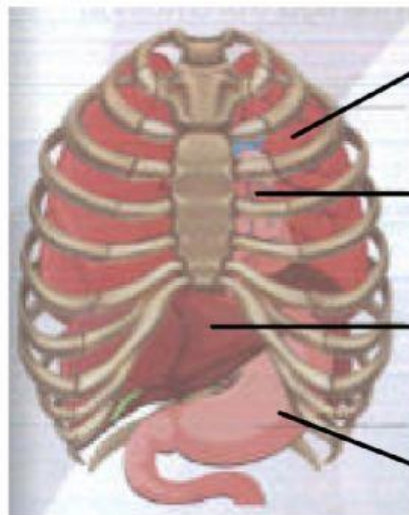
Fill in the box with the correct answer.

liver

heart

stomach

lungs



Ribs
