

Ronald the Rhino

Can you answer these questions?

1. "Ronald the Rhino is big and"

heavy

strong

tall

2. "At the front of his head is a horn."

stripy

colourful

beautiful

3. Draw a line to complete the sentences. One has been done for you.

In the Javan forest,

he longs for much more.

But Ronald is sad,

is big and strong.

At the front of his head

is where he belongs.

Ronald the Rhino

is a beautiful horn.

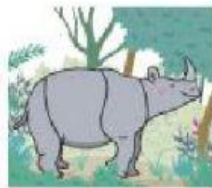
4. What colour is Ronald's skin?

Ronald the Rhino Missing Sounds

Can you fill in the missing sounds to complete the words, using the letter combinations below.

m P t L t h f f R w

_onald



_ater



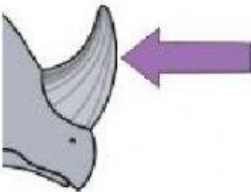
_orest



_riends



_orn



_ear



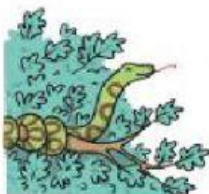
_eopard



_ree



_ython



_ud

