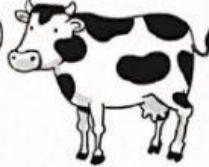


1 Complete the texts.

A



B



Animals A and B both have a skeleton. They are _____.

Animal A moves by flying and animal B moves by _____ and running. Animal A is a bird and animal B is a _____.

The offspring of animal B is born directly from the mother's womb. The offspring of animal A is born from _____.

This means that animal A is _____ and animal B is _____.

Animal A eats meat and is called a _____.

Animal B eats grass and is called a _____.

2 Write the name of one animal that has each type of body covering.

A. feathers: _____

C. fur: _____

B. bare skin: _____

D. scales: _____

3 How do these animals move?

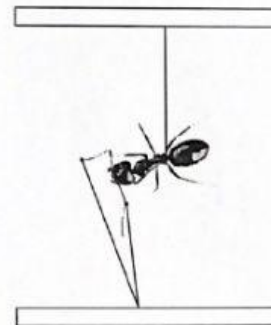
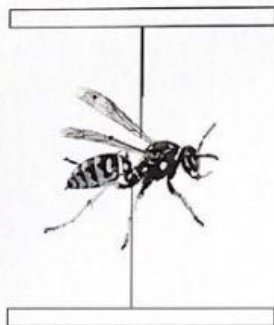
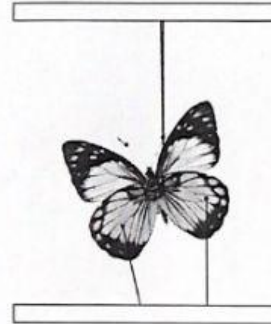








4 Label the body parts of the invertebrates.



1 Write the vertebrate group each animal belongs to.

fish mammal bird reptile









2 Match the vertebrates to their body covering.



feathers



bare skin



fur



scales



- 3 Unscramble the letters to name the invertebrates. Then, draw lines to match the animals with their body parts.

eeb

linas

strelob



legs

wing

shell

abdomen

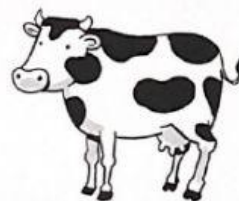
claw

- 4 Complete the sentences. Write *herbivores* or *carnivores*.



Eagles eat other animals. They are

_____.

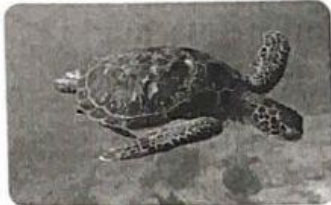


Cows eat grass.

They are

_____.

1) Where do these animals live? Match.



in water

in the soil

on land

2) What type of vertebrate is it? Write.

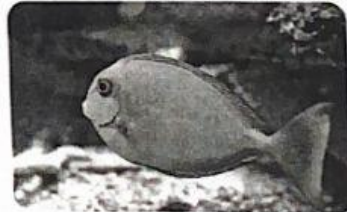
amphibian

reptile

mammal

bird

fish





3 What body covering does it have? Circle and write.

B A R E S K I N
T D S F U R Z D
F E A T H E R S
N E S C A L E S

eagle →

dog →

goldfish →

frog →

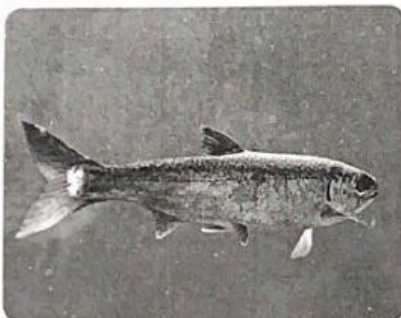
4 Read and cross out (X) the wrong words.



- A. This is a **cat** / **bird**.
It is a **mammal** / **bird**.
It has **bare skin** / **fur**.
It lives **in water** / **on land**.
It **walks** / **flies**.



- B. This is a **snake** / **lion**.
It is a **reptile** / **an amphibian**.
It has **feathers** / **scales**.
It lives **in the soil** / **on land**.
It **slithers** / **swims**.



- C. This is a **crocodile** / **fish**.
It is a **bird** / **fish**.
It has **scales** / **fur**.
It lives **on land** / **in water**.
It **flies** / **swims**.

5 Read and circle the correct invertebrate.

A. It has an exoskeleton. →



B. It has a soft body. →



C. It has a shell. →



D. It has antennae. →



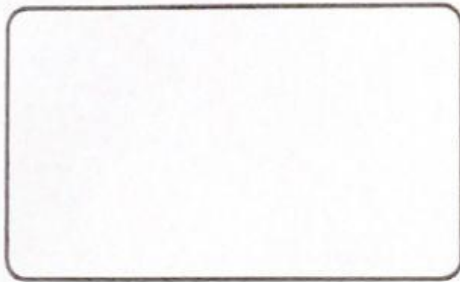
E. It has wings. →



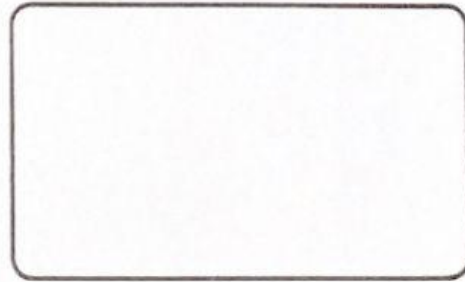
F. It has claws. →



6 Draw two invertebrates. Then, write.



It is a _____.



It is a _____.

7 Read and match.

herbivore

crocodile

flat teeth

carnivore

zebra

sharp teeth

omnivore

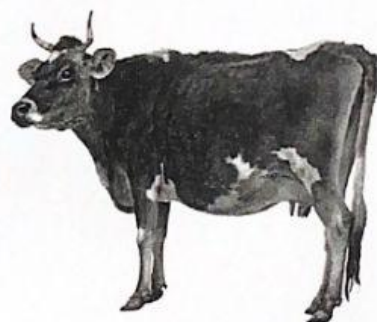
cow

sharp and
flat teeth

pig

8 Read and complete the sentences.

viviparous oviparous mother's womb eggs

A. _____ animals
are born from their
_____.B. _____ animals
are born from
_____.