

1. Match the terms on left with their description on the right.

Humanism	perfected the printing press in around 1440.
Patron	was a religious movement in 16th century in Europe.
Heliocentrism	was the philosophical and cultural movement in Europe.
Counter-Reformation	a theory that places the Sun at the centre of the universe.
Guttenberg	wealthy noblemen and burguers, they supported artists.
Reformation	was a reform movement within the Catholic Church to resiste Preotestantism.

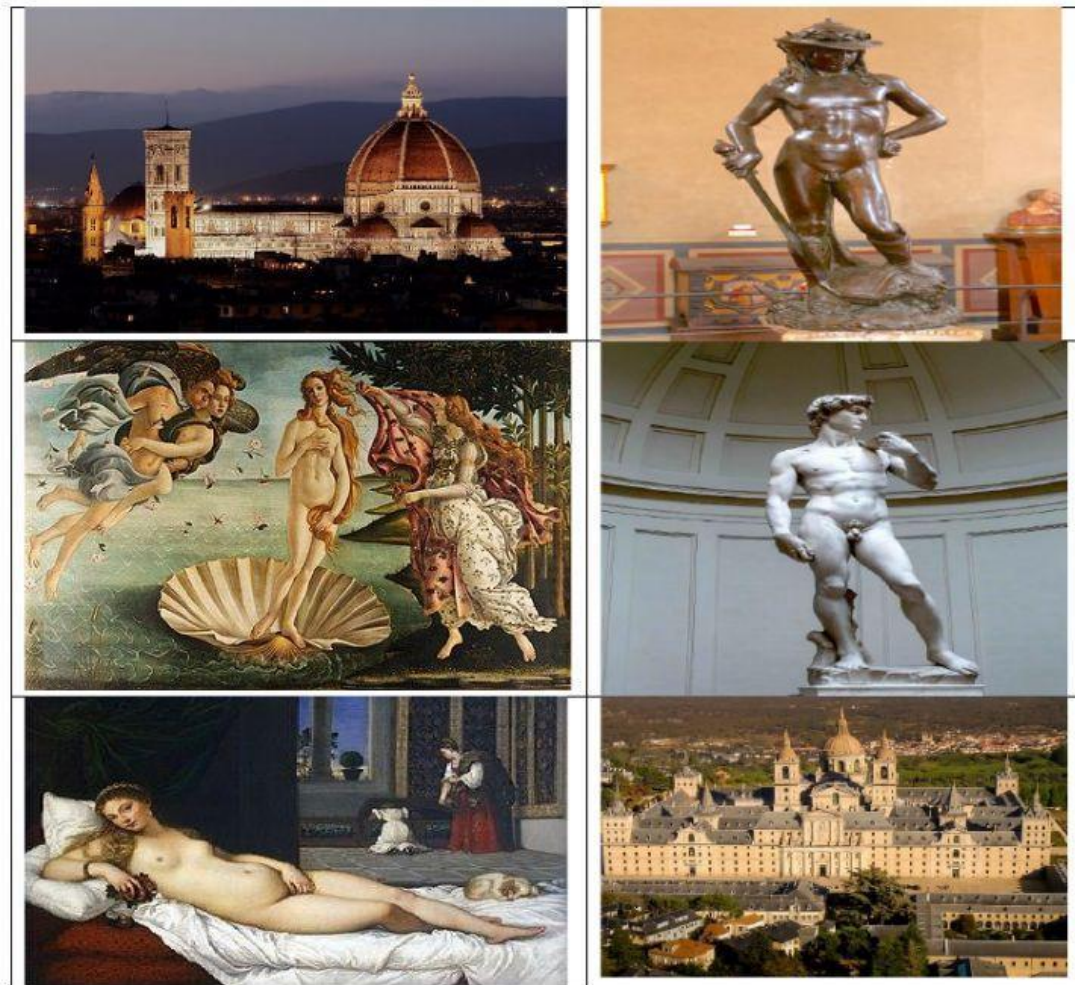
2. Mark if the following characteristics belong to Humanism:

Theocentric	Anthropocentric	No felt curiosity
Use of the reason	Read medieval text	Heliocentrism

3. Complete the following sentences:

- a) The Renaissance Art found inspiration in the.....The Renaissance style began in and divided in two main stages. They are the and
- b) The patrons were noblemen and burguers the supported theThey belong to many importat families such as
- c) Architects in the Renaissance art looked for..... and They made use of classical features such as
- d) The(1545-1563), adopted a series resolutions: It confirme..and, the seven sacraments, the cult of the Virgin and the saints and the validity of good works. It prohibited sale, was created to form clergy and the catechism.

4. Identify the following masterpieces and the artist who created them.



The dome of the Florence cathedral.	Tizian.	David.
Michelangelo.	Brunelleschi.	The Venus of Urbino.
The Birth of Venus.	Juan de Herrera.	Donatello.
Botticelli.	David.	The Monastery of San Lorenzo.