

## FACTS ABOUT MALE REPRODUCTIVE SYSTEM

The male reproductive system includes two testicles which hang between the legs in a pouch called the scrotum.

The testicles are glands that produce sperm.

The sperm travel through tubes to the penis, an organ in front of the scrotum.

Sperm leave a man's body through the penis.

Human reproduction is the process by which human beings create more of their own kind.

Human beings reproduce sexually, that is, a new individual develops from the joining together of two sex cells.

The male sex cell, sperm, comes from the male, and female sex cell, egg, comes from the female.

The union or joining of these cells is called fertilization.

## FACTS ABOUT THE FEMALE REPRODUCTIVE SYSTEM

Most of the female reproductive system lies within the woman's body.

Deep within the body are two glands called ovaries, each of which contains hundreds of eggs.

About once a month during a woman's childbearing years, one of the ovaries release an egg.

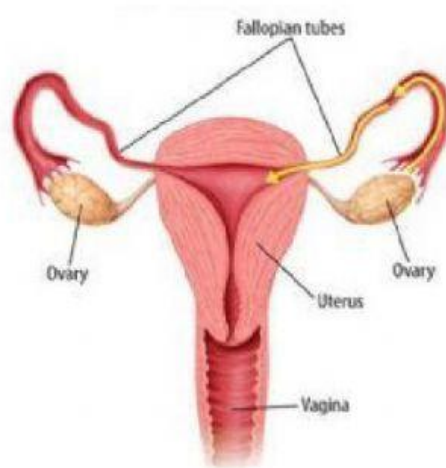
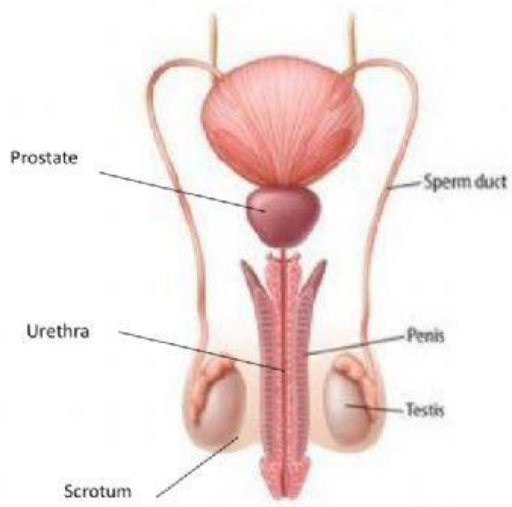
The egg travels down a narrow duct called the oviduct or Fallopian tube.

The female body has two Fallopian tubes, one leading from each ovary.

The Fallopian tubes open into the top of the uterus, a hollow, muscular organ.

The other end of the uterus leads to a canal called the vagina.

The vagina extends to the outside of the body, opening between the legs.



The male reproductive system includes two \_\_\_\_\_ which hang between the legs in a pouch called the \_\_\_\_\_.

The testicles are glands that produce \_\_\_\_\_.

The sperm travel through tubes to the \_\_\_\_\_, an organ in front of the scrotum.

In reproduction, \_\_\_\_\_ leaves a man's body through the penis.

Human reproduction is the process by which human beings \_\_\_\_\_.

Human beings reproduce sexually, that is, a new individual develops from the joining together of two \_\_\_\_\_.

The male sex cell, \_\_\_\_\_, comes from the male, and female sex cell, \_\_\_\_\_, comes from the female.

The union or joining of these cells is called \_\_\_\_\_.

## FACTS ABOUT THE FEMALE REPRODUCTIVE SYSTEM

Most of the female reproductive system lies \_\_\_\_\_ the woman's body.

Deep within the body are two glands called \_\_\_\_\_, each of which contains hundreds of \_\_\_\_\_.

About \_\_\_\_\_ a month during a woman's childbearing years, one of the ovaries releases \_\_\_\_\_.

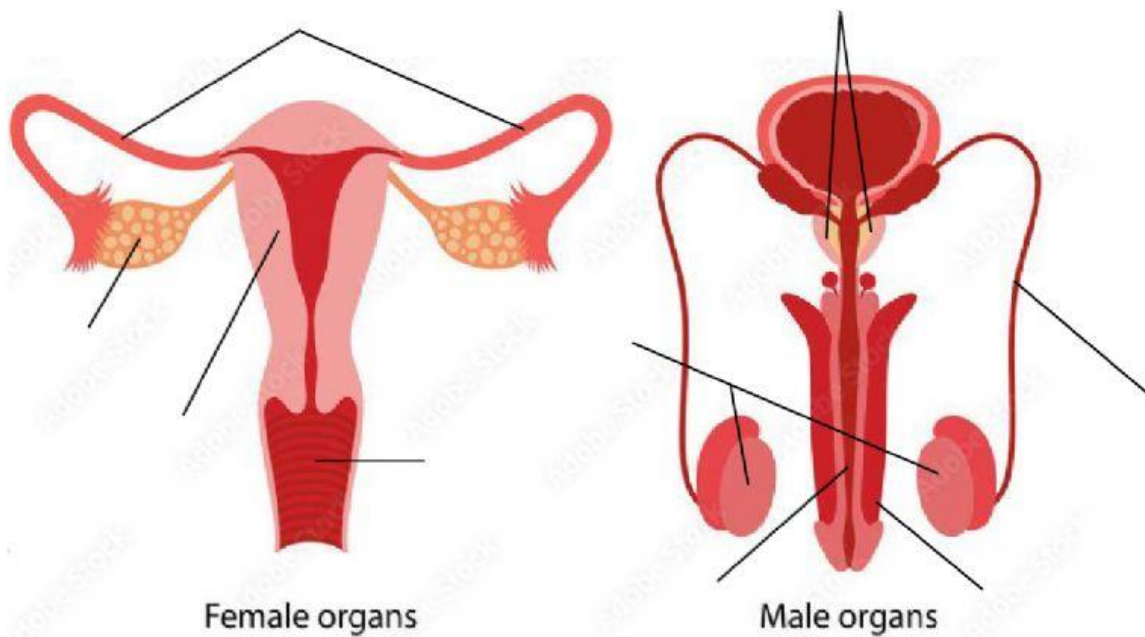
The egg travels down a narrow duct called the \_\_\_\_\_ or \_\_\_\_\_.

The female body has \_\_\_\_\_ Fallopian tubes, one leading from each \_\_\_\_\_.

The Fallopian tubes open into the top of the \_\_\_\_\_, a hollow, muscular organ.

The other end of the uterus leads to a canal called the \_\_\_\_\_.

The vagina extends to the \_\_\_\_\_ of the body.



Testis	Ovaries	Sperm Duct	Uterus	Urethra
Oviduct or Fallopian Tube	Penis	Vagina	Prostates	