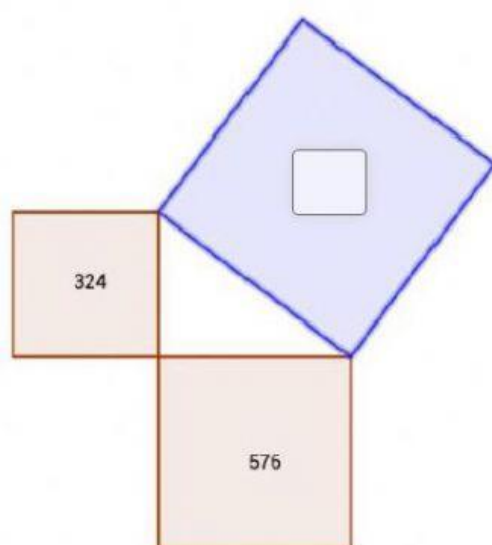
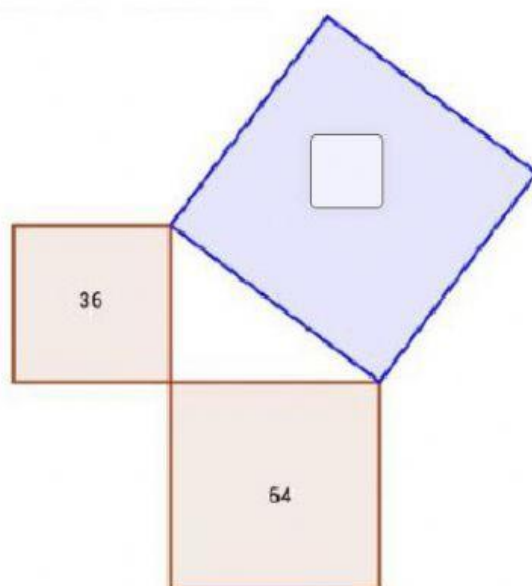
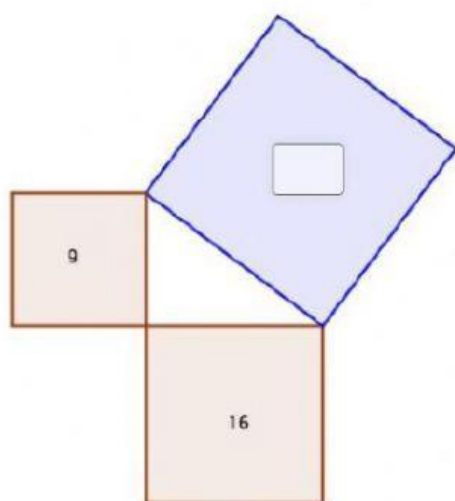
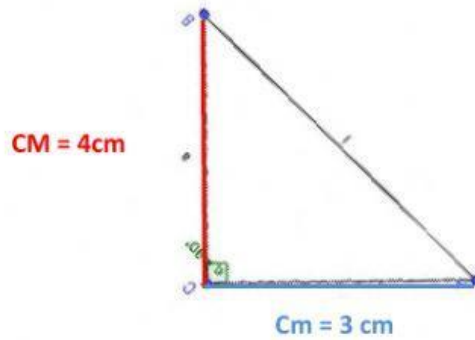


1. Quanto vale l'area del quadrato costruito sull'IPOTENUSA?



## 2. PROBLEMA

UN TRIANGOLO RETTANGOLO HA IL CATETO MAGGIORE CHE MISURA 4 cm E IL cateto minore CHE MISURA 3 cm. CALCOLA L'IPOTENUSA.



DATI:

CM=                      cm

Cm=                      cm

INCOGNITA:

FORMULA:

$$i = \sqrt{C_m^2 + C_M^2}$$

CALCOLI:

CM<sup>2</sup>=                      cm<sup>2</sup>

Cm<sup>2</sup>=                      cm<sup>2</sup>

i =



=