

**A** Listen and point to the words. Listen again and say the words.  2-42



park



library



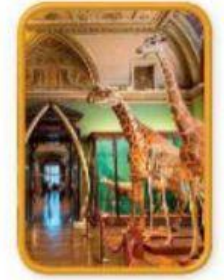
supermarket



drugstore



bakery



museum

**B** Think about the places in **A**. Add them to the chart.

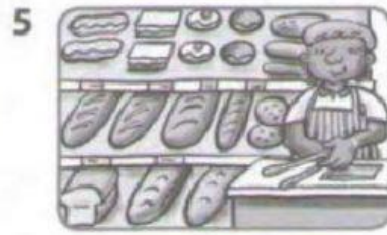
We go here to buy things.

We don't go here to buy things.



**A** Find the words. Then write the words.

dfdrugstorebkmuseumbqparkiksupermarketlsbakeryjalibrarynb



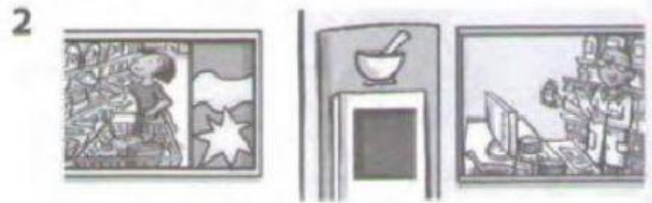
drugstore

**B** Look and put a check (✓) in the box for correct sentences and a cross (X) in the box for incorrect sentences. Correct the sentences with a cross.



There's a park and a supermarket.

There's a park and a library. \_\_\_\_\_



There's a supermarket and a library.



There's a museum and a bakery.



There's a supermarket and a park.