

Complete the tasks below

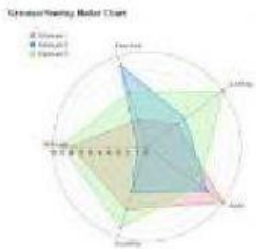
GEARING UP

- A.** Look at the different skills pictured in the table below. Think about how you might learn each one.
- B.** Discuss your ideas with a partner. Choose the best ways to learn each skill and write them in the table.

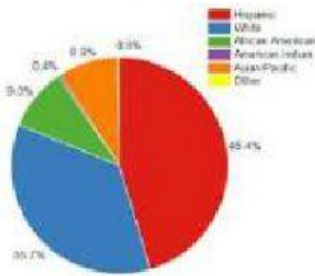
BEST WAYS TO LEARN	
	<ul style="list-style-type: none">• Memorization• Technique• _____
	<ul style="list-style-type: none">• Creativity• Solid Knife Skills• _____
	<ul style="list-style-type: none">• Team-work• Problem solving• _____

- C.** Work in groups. Compare your answers with those of other students. Which skill interests you most? Which way of learning interests you? Why?

Match the images to their descriptions



Radar chart—used to compare information



Line graph—connects a sequence of data over time



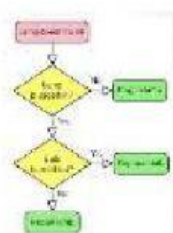
Pie chart—indicates percentages of the whole



Flow chart—shows how stages in a process are connected

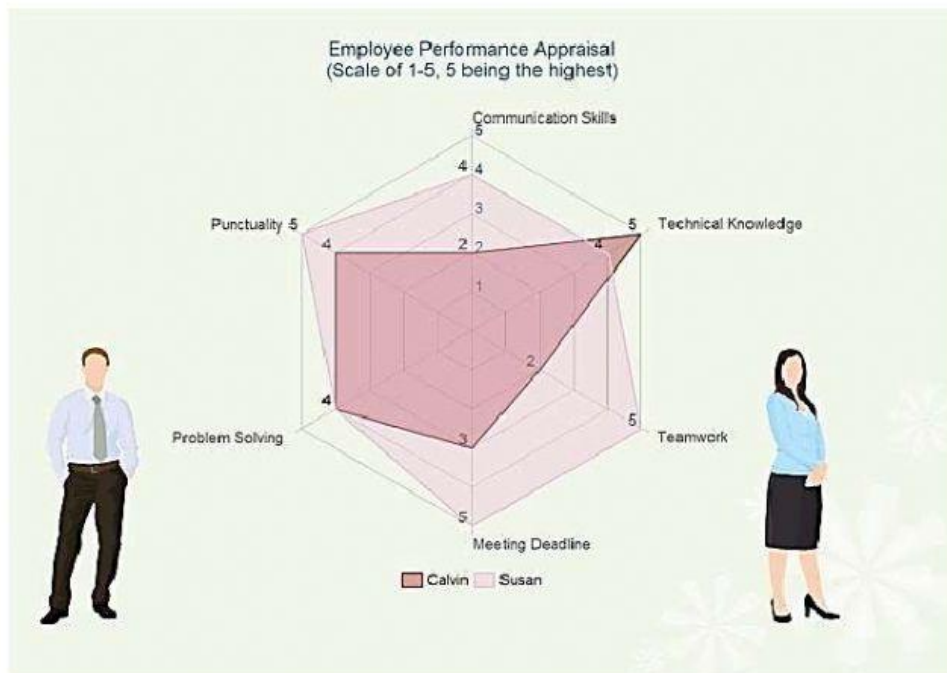


Mind map—shows relationships between ideas



Bar graph—compares amounts or quantities over time

In this example, you can see how the overall performance of two employees is compared using a spider graph. To compare them, we have used variables like punctuality, communication skills, technical knowledge, teamwork, etc. Furthermore, both the employees are allocated points (1-5) for each of these variables and are compared accordingly.



Who is better at technical knowledge?

Which skills did Susan score 5 on?

What is Calvin's worst performance skill?

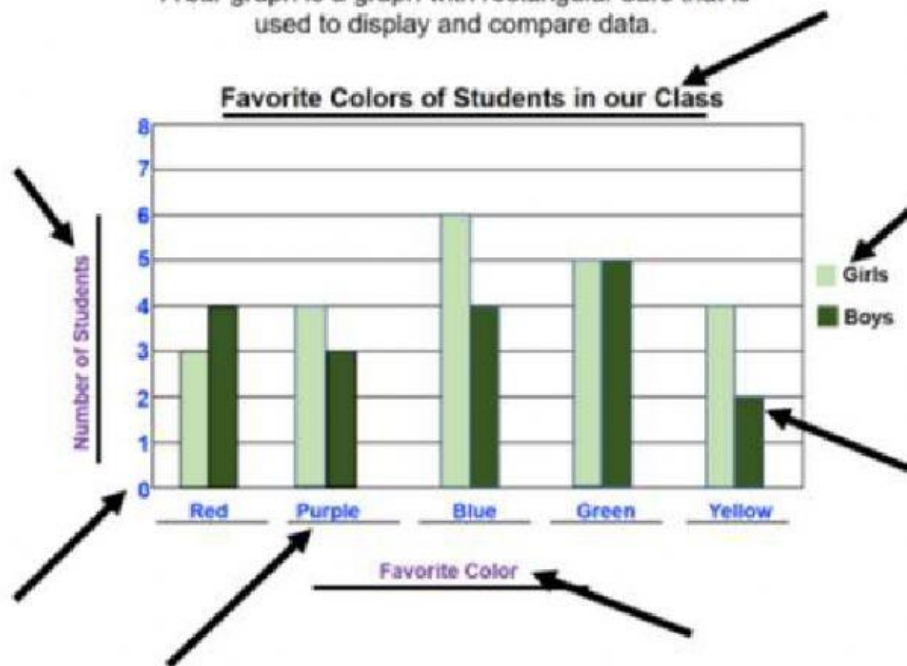
Who is more punctual?

Neither Calvin nor Susan scored the maximum score on these skills, what are they?

Susan did twice as good in this skill as Calvin. What skill was it?

Parts of a Bar Graph

A bar graph is a graph with rectangular bars that is used to display and compare data.



Use the word below to label the graph.

y axis label, Title, Categories, Bars, Scale, Key/Legend, x axis label

Match the labels to their descriptions:

- **y axis label**
 - **Title**
 - **Categories**
 - **Bars**
 - **Scale**
 - **Key/Legend**
 - **x axis label**
- Tells us what the data is about that was collected
 - Used to display the data so it's easy to compare
 - Tells us what each bar color represents
 - Tells us what the graph is about
 - Tells us what is being counted or measured
 - Shows the units used on the graph
 - Each category tells specifically what each bar stands for

