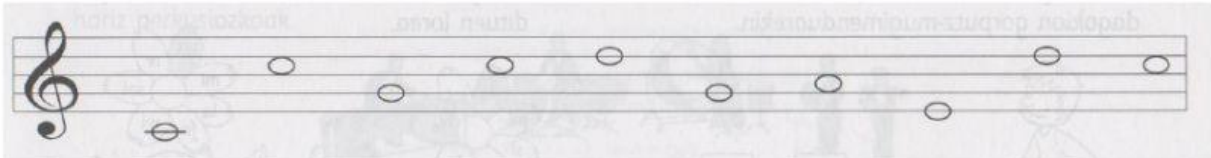


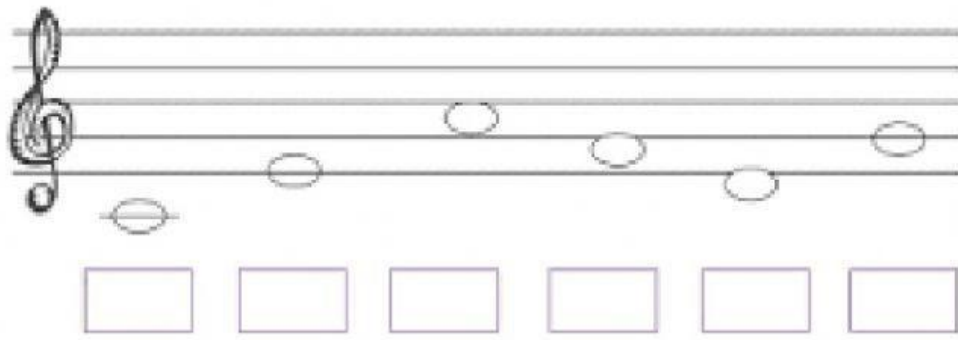
Notak ikasten:



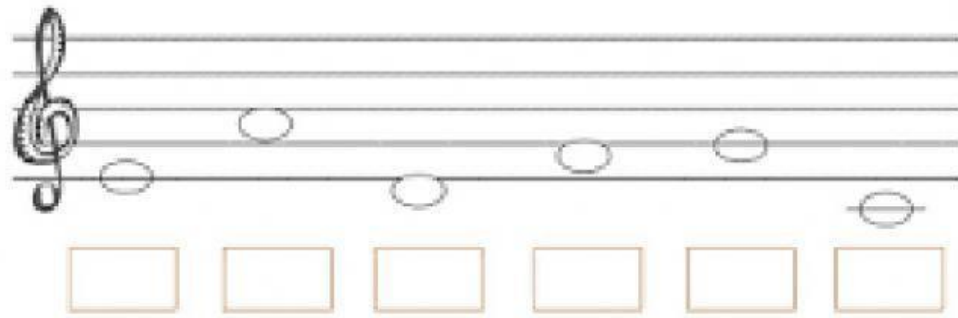
Jarri izenak hurrengo notei:



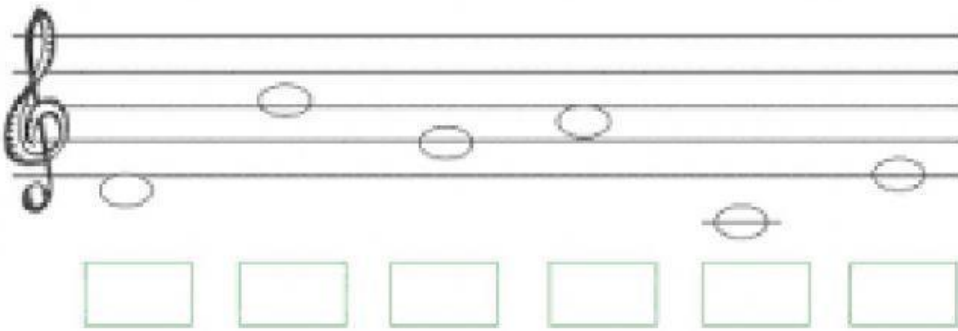
□ □ □ □ □ □ □ RE □



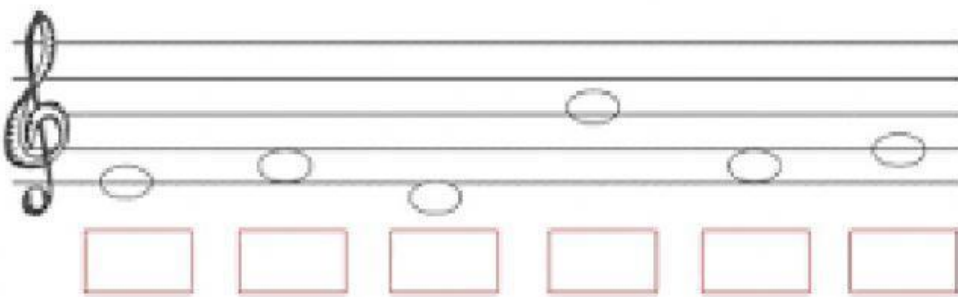
A musical staff with a treble clef. The notes are: G1 (below the staff), A1 (first line), B1 (first space), C2 (second line), D2 (second space), and E2 (third line). Below the staff are six purple rectangular boxes, one under each note.



A musical staff with a treble clef. The notes are: F2 (third space), G2 (third line), A2 (third space), B2 (fourth line), C3 (fourth space), and D3 (fifth line). Below the staff are six orange rectangular boxes, one under each note.



A musical staff with a treble clef. The notes are: E2 (third line), F2 (third space), G2 (third line), A2 (third space), B2 (fourth line), and C3 (fourth space). Below the staff are six green rectangular boxes, one under each note.



A musical staff with a treble clef. The notes are: D3 (fifth line), E3 (below the staff), F3 (below the staff), G3 (below the staff), A3 (below the staff), and B3 (below the staff). Below the staff are six red rectangular boxes, one under each note.

Osatu taulak:

Zein da hurrengo nota?

Do	re	
re	mi	
mi	Fa	
fa	Sol	
sol	la	
la	si	

Zein da tarteko nota?

Do		mi
re		fa
mi		sol
fa		la
sol		si
la		do