

- A** Think about **The Hair Contest**. When do you learn about each thing? Choose **B** for beginning, **M** for middle, or **E** for end.

- | | | | |
|--------------------------------|----------|----------|----------|
| 1. Jeff feels angry. | B | M | E |
| 2. Jeff doesn't like his hair. | B | M | E |
| 3. Jeff wins the contest. | B | M | E |


Remember!

There are three parts to a **plot**: beginning, middle, and end.



- B** Listen to **The Hair Contest** again. Choose the correct answer.  58

- | | | |
|-------------------------------|---|---|
| 1. Where is the hair contest? | <input type="checkbox"/> a. on TV | <input type="checkbox"/> b. at school |
| 2. Why is Jeff angry? | <input type="checkbox"/> a. He never wins prizes. | <input type="checkbox"/> b. He won a math quiz. |
| 3. Who makes cool jewelry? | <input type="checkbox"/> a. Jeff's mom | <input type="checkbox"/> b. Elsa's mom |

- C** Listen and choose the correct picture. Then write the key word.  59



☐ a.



☐ b.



☐ a.



☐ b.



☐ a.



☐ b.

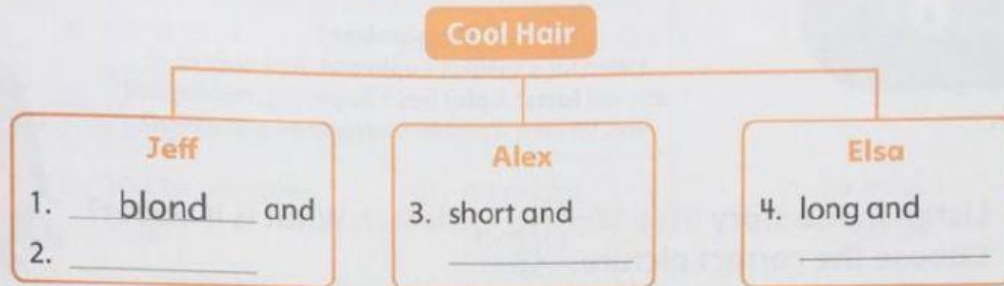


☐ a.



☐ b.

- D** Listen to **The Hair Contest** again. Work with a partner.
Complete the diagram.  60



- E** Look at **D**. Answer the questions. Use *he's* or *she's*.



Is Jeff the one with blond hair?
Yes, he's the one with blond hair.




Is Jeff the one with straight hair?



Is Alex the one with long hair?



Is Elsa the one with dark hair?

D Listen. Then read and choose the correct answer.  145

1. What is the girl going to do?

a.



b.



c.



2. Who's Danielle?

a.



b.



c.

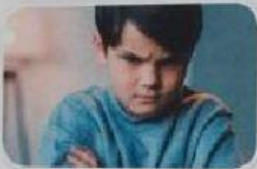


3. Who's Sally?

a.



b.



c.



E Complete the sentences.

1. I'm going to g _____ a h _____ tomorrow.
2. I wear my hair in a b _____ to play volleyball.
3. Grace is very c _____. She's good at math and science.
4. Mom, where are my e _____

Remember!