

1. Drag and drop the parts of a microscope to the correct places

objectives

stage

base

arm

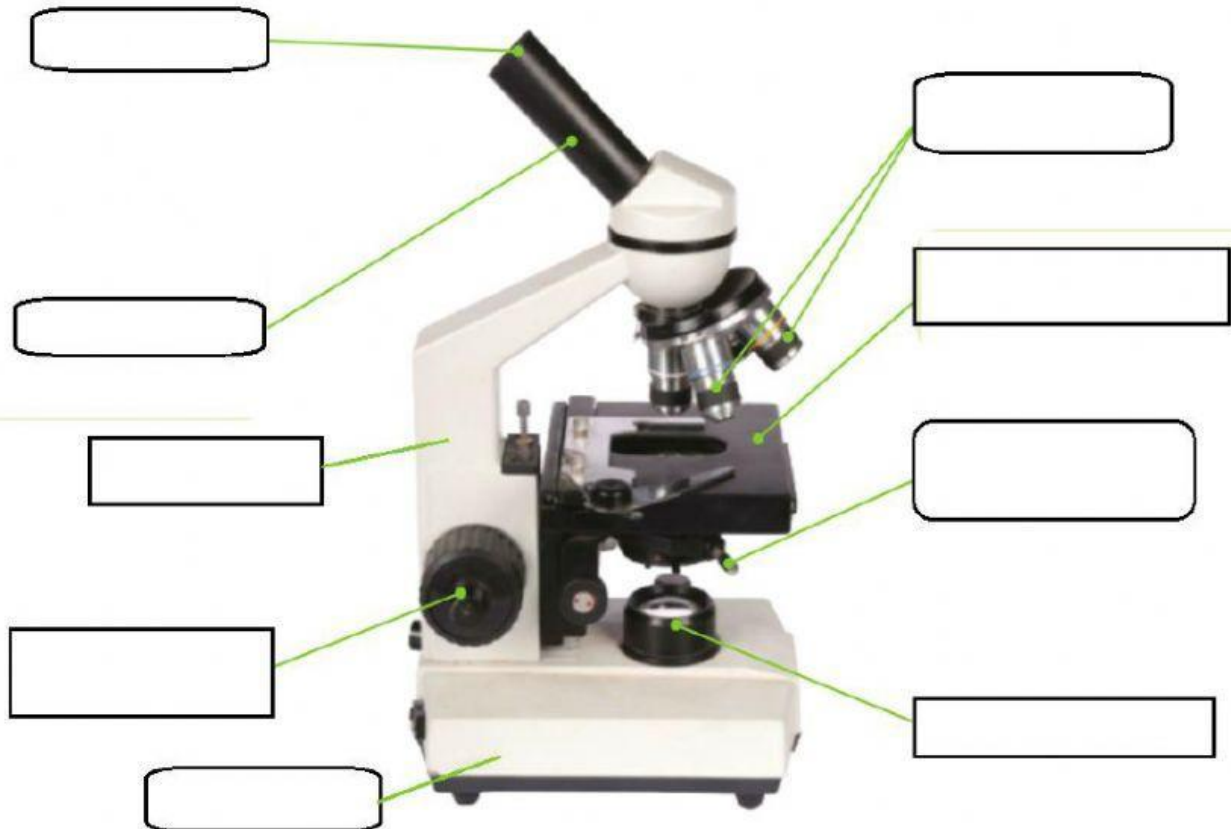
tube

light source

diaphragm

eyepiece

focusing knobs



2. Parts and function of the compound light microscope

objectives

arm

base

light source

eyepiece

tube

stage

focusing knobs

diaphragm

- a) _____ contains the lens that we look through.
- b) The slide is placed on the _____
- c) _____ contain the lenses closest to the sample.

- d) _____ provides light for viewing the slide.
- e) _____ supports and stabilizes the microscope
- f) _____ supports the body tube
- g) _____ connects the eyepiece to the objectives.
- h) _____ controls how much light reaches the slide.
- i) _____ moves the stage up and down to focusing.

3. Look at the picture of the girl using a microscope and answer the questions.

- a. Which part of the microscope is the girl looking through?
- b. Which other part of the microscope has a lens?
- c. Which part is she adjusting with her hand?

