

<b>Subject</b>	ICT	<b>Grade</b>	7
<b>Assessment Type</b>	Worksheet	<b>Title</b>	Ch.1
<b>Student Name:</b>			

**QA. Choose the correct answer:**

- 1) A program used to edit images:

1. Scratch                      2. Photoshop                      3. Ms. Excel

- 2) To begin working and editing on Photoshop use the commands:

1. File-Open                      2. File-New                      3. Both

- 3) If the image will be printed, use ..... Measurement for width and height:

1. Pixels                      2. Meter                      3. CM

- 4) This part of the photoshop welcome screen called

- 1.** Sub-menus                      **2.** Toolbar                      **3.** Main menu



- 5) This icon shows  :

1. Foreground color                      2. Background color                      3. Margins color



- 6) This icon represents  :

1. Brush tool                      2. Blur tool                      3. Filter tool

- 7) To cancel a command done while working on Photoshop press on:

1. CTRL+ T                      2. CTRL+ Z                      3. CTRL+A

- 8) To reduce the image size, use the command:

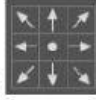
1. Image – Image size
  2. Image – canvas size
  3. Image – Mode

- 9) The image on Photoshop can be rotated by 180 degrees to the right with the command:

1. Image – Mode                      2. Lasso tool                      3. Image – Image rotation

- 10) The layer that holds the image on Photoshop called:

1. Layer 1                      2. Background                      3. Canvas



11) When applying this option the canvas will be added from:

- 1. Both sides
- 2. Left side only
- 3. Right side only

12) To zoom out an image the keyboard shortcut ..... is used:

- 1. CTRL+
- 2. CTRL#
- 3. CTRL-

13) A tool that allows you to apply the same size to different pictures is:

- 1. Crop tool
- 2. Lasso tool
- 3. Blur tool

14) To maintain a good quality of the images set the resolution to:

- 1. 5000
- 2. 200
- 3. 1800

15) To confirm the selection press on:

- 1. Space key
- 2. Enter key
- 3. Alt key

16) To confirm the dimensions of the image after setting the width & height of the crop tool, click on:

- 1. Image – Image size
- 2. Image – Mode
- 3. Filter – Noise

17) To move a selected / cut picture on the background image on Photoshop, use the:

- 1. Quick selection tool
- 2. Move tool
- 3. Eraser tool

18) The command Select – Inverse is used when:

- 1. The background is selected
- 2. Nothing selected
- 3. The canvas selected

19) In case there's a color contrast between the background and the object use the:

- 1. Magnetic Lasso tool
- 2. Polygonal lasso tool
- 3. Magic wand tool

20) To apply an effect on a text, first select it's layer then execute the command:

- 1. Layer – layer style
- 2. Filter – Dust
- 3. Image – rotation

21) This toolbar  appears

after clicking on the text tool and used to:

- 1. Resize the canvas
- 2. Change the title/text properties
- 3. Image borders

22) By clicking on Image – adjustments – levels or CTRL + L, you can:

- 1. Lighting a dark image
- 2. Open many pictures
- 3. Setting a grayscale mode

**QB. Answer with True or False:**

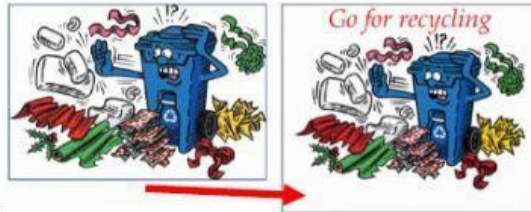
1. The command Image – mode – grayscale used to convert a colored picture to sepia colors.
2. The magic wand tool is used to select a plain color with one click.
3. To change the size of a layer press on CTRL+T or click on edit – free- transform.
4. By changing the value of the feather, the softness of the edges can be changed.
5. To remove the selection, use the shortcut CTRL+D.
6. In Photoshop all the tools are shown and none of it hidden behind additional tools.
7. Even if a small part of the image is selected, the size will be equal to the one set by the crop tool.
8. By default, the canvas has exactly the same size as the image.
9. Rotating the image by 90 counterclockwise, will turn the image 90 degrees to the right.
10. Photoshop can be used for creating montage and correcting images.
11. Set the Measurement for width and height in Pixels If the image will be used in Web, PowerPoint or sent by email.



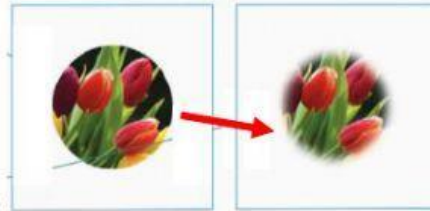
12. Those settings are used to change the brush tool properties.
13. Each time a new image pasted on the background picture will be placed in a new layer.
14. It's possible to open many pictures at the same time.
15. The Sepia colors effect gives the picture an old appearance and it's applied by clicking on image – adjustments – Hue/saturation.



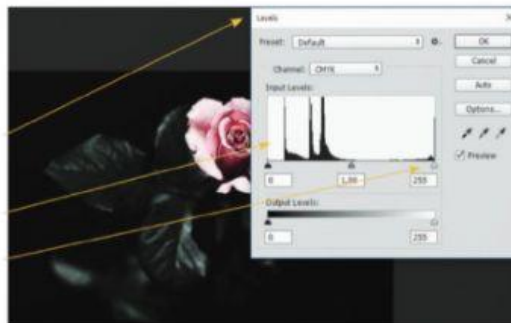
16. The color style of this picture is grayscale.



17. The changes applied to the following image are: more pixels added around canvas and a text inserted.



18. The edit that applied for the selected picture borders is , Auto select.



19. The following settings showing: Lighting an image.

20. To select the entire image press on, CTRL+C.

21. To select shapes manually the lasso tool can be used.