

## Elapsed Time: Whole Hour



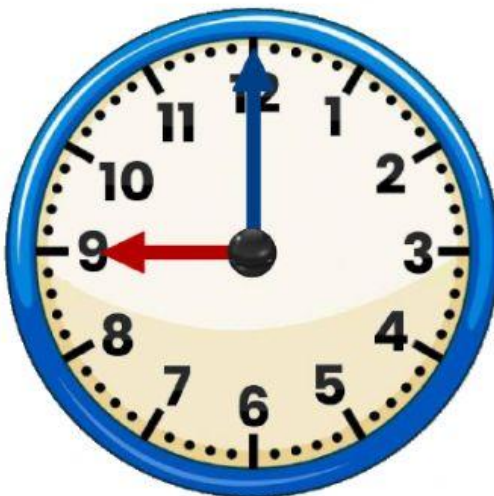
What time will it be in 1 hour and 0 minutes?

It will be \_\_\_\_\_ o'clock.



What time will it be in 3 hour and 0 minutes?

It will be \_\_\_\_\_ o'clock.



What time will it be in 2 hour and 0 minutes?

It will be \_\_\_\_\_ o'clock.



What time will it be in 2 hour and 0 minutes?

It will be \_\_\_\_\_ o'clock.



What time will it be in 3 hour and 0 minutes?

It will be \_\_\_\_\_ o'clock.



What time will it be in 2 hour and 0 minutes?

It will be \_\_\_\_\_ o'clock.



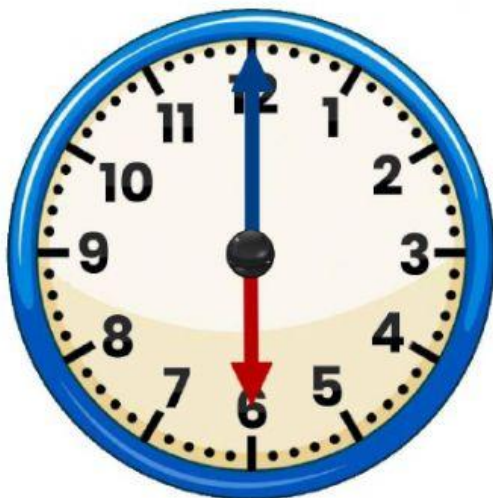
What time will it be in 4 hour and 0 minutes?

It will be \_\_\_\_\_ o'clock.



What time will it be in 2 hour and 0 minutes?

It will be \_\_\_\_\_ o'clock.



What time will it be in 3 hour and 0 minutes?

It will be \_\_\_\_\_ o'clock.