

Complete the following definitions:

a) They connect the ovaries and the uterus (2 words): _____

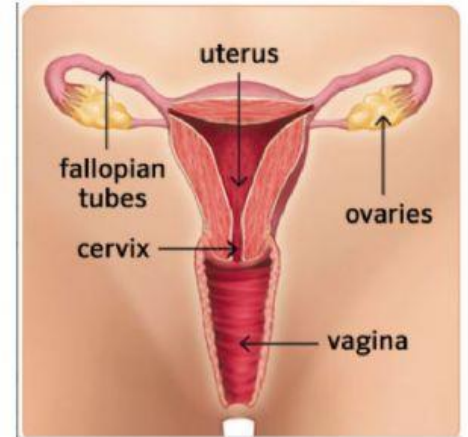
b) The narrow part of the uterus that connects it to the vagina: _____

c) A muscular canal that connects the cervix to the vulva: _____

d) Where a fertilised egg cell develops into a fetus: _____

e) The female gamete or ovum (2 words): _____

f) The external sex organs of the female reproductive system:



Are these sentences TRUE or FALSE? Correct the false ones:

The menstrual cycle is 38 days long.

Menstruation is blood and tissue from the uterus that pass out to the vagina.

An egg becomes mature in one of the fallopian tubes.

The egg cell stays in the vagina waiting to be fertilised.

If the egg cell is not fertilised, it leaves the body with blood and tissue.

Choose the correct option:

a) The female reproductive system has...

1. two ovaries.
2. one ovary.
3. three ovaries.

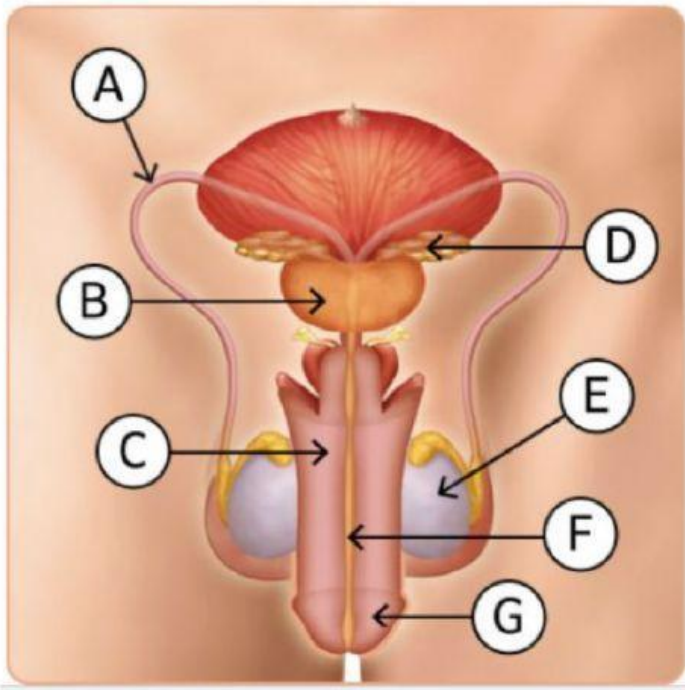
b) A mature egg cell is released every...

1. 15 days.
2. month.
3. 28 days.

c) Sperm cells are produced...

1. until a man is between 45 and 55 years old.
2. during man's whole life.
3. until puberty.

Complete the words:



A. v__s def__rens

B. pr__stat__

C. p__nis

D. sem__nal v__sic__es

E. t__sticl__s

F. ur__thra

G. f__resk__n

Complete the description of the male reproductive system:

The male reproductive system produces _____ and transports them out of the _____ and into _____. It consists of two _____ that produce the sperm cells. It also has
_____,
_____ and _____.

Match:

- | | |
|---------------------|--|
| a) foreskin | 1. large gland that produces a white liquid |
| b) prostate | 2. tubes which sperm cells travel through from the testicles |
| c) urethra | 3. a fold in the skin that covers the end of the penis |
| d) vas deferens | 4. small glands that produce a liquid that forms the semen |
| e) penis | 5. tube that goes out of the end of the penis |
| f) testicles | 6. elastic organ with a cylindrical shape |
| g) seminal vesicles | 7. two oval organs where sperm cells are produced |