

Student Name: **Class:**

VAS – Grade 6
Unit 4-Classifying &
Identifying Organisms
End of Unit Test

Time Allowed = 25 mins

INSTRUCTIONS:

Attempt all questions.

Make sure to click “Show right answers” after you have submitted.

Compare your answers to the right answers.

Total Marks = 19	Score =
Percentage =	%
Grade =	

Check your Progress

4.1 The list describes some of the features of a horse.

- It can move.
- It has a heart.
- It has hair.
- It feeds.
- It respire.
- It can sense changes in its environment.
- It has a brain.



a Write down each feature in the list that is a characteristic of **all** living things. [4]

b Write down **two** more characteristics of living things that are not included in part a. [2]

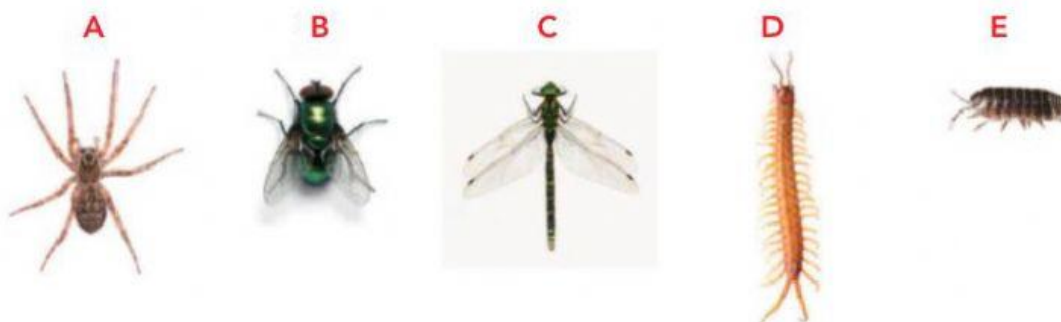
Answers:

a.

.....

b.

4.2 The pictures show some animals that belong to different groups.



Use the key to classify **each** animal into the correct class.

[5]

- | | | | |
|---|---|---|-----------------|
| 1 | a | has three pairs of legs..... | class insects |
| | b | has more than three pairs of legs..... | go to 2 |
| 2 | a | body has many segments (rings) with a pair of legs on each segment..... | class myriapods |
| | b | does not have a pair of legs on each segment..... | go to 3 |
| 3 | a | has eight legs..... | class arachnids |
| | b | has more than eight legs..... | class crustacea |

Write your answers here:

A.

D.

B.

E.

C.

- 4.3** A scientist studies birds in New Zealand. The photographs show two kinds of parakeet that live there.

The scientist wants to find out if these two kinds of parakeet belong to different species.



Yellow-crowned parakeet



Red-crowned parakeet

She searches in suitable habitats for pairs of parakeets that are making nests.

She never finds a yellow-crowned parakeet that has paired up with a red-crowned parakeet.

- a** The scientist concludes that the yellow-crowned parakeet and red-crowned parakeet belong to two different species.

What evidence does she have for making this conclusion?

[2]

.....
.....

- b** Suggest what the scientist should do to be even more certain that her conclusion is correct. Choose from:

- looking at stuffed specimens of parakeets in a museum
- checking more pairs of parakeets in the wild
- looking at other species of parakeets.

Explain your answer.

[2]

.....
.....

4.4 The photograph shows six flowers, **A** to **F**.

A is Limnanthes

B is Viola

C is Potentilla

D is Lunaria

E is Erodium

F is Silene



Here is part of a key that someone could use to identify each of the flowers.

Copy and complete the key.

[4]

- 1 **a** The flower has exactly four petals. **Lunaria**
 b The flower has more than four petals. go to 2
- 2 **a**
 b
- 3 **a**
 b
- 4 **a**
 b
- 5 **a**
 b