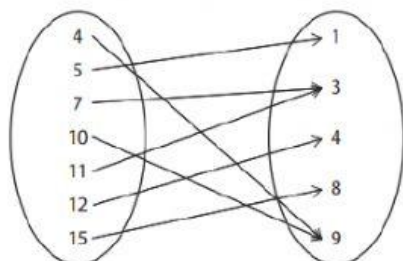
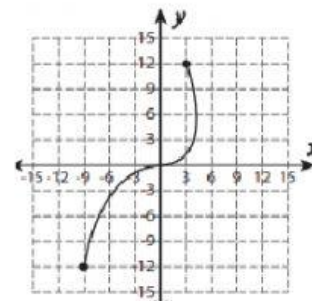


FUNCTION OR NONFUNCTION

DIRECTIONS: Use the drop down box to identify that the graph, table, or map is a function or not a function.

| x | y |
|-----|-----|
| -13 | -3 |
| -3 | 7 |
| 12 | -13 |
| 17 | 8 |
| -3 | 14 |
| 0 | -19 |

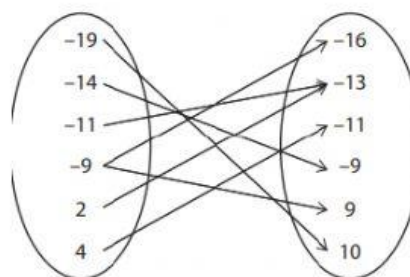
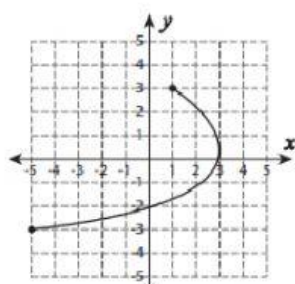
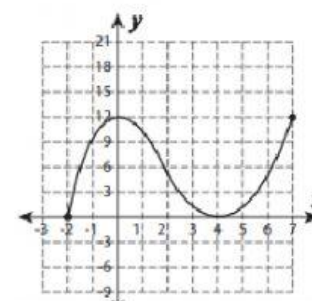


FUNCTION

| x | y |
|-----|-----|
| 4 | -20 |
| 1 | -17 |
| 4 | -14 |
| 16 | 5 |
| 10 | 0 |
| -19 | -16 |

| x | y |
|-----|-----|
| 2 | 15 |
| 3 | 12 |
| 6 | -4 |
| 7 | -1 |
| 18 | -4 |
| 20 | -8 |

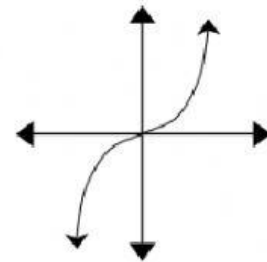
**NOT A
FUNCTION**



PROPORTION OR NONPROPORTION

DIRECTIONS: Use the drop down box to identify that the graph or table is proportional or nonproportional.

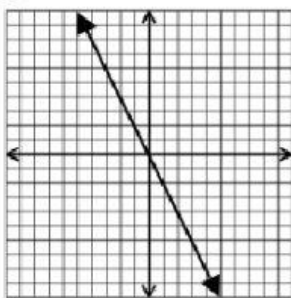
An object on Earth weighs 6 times more than it does on the Moon.



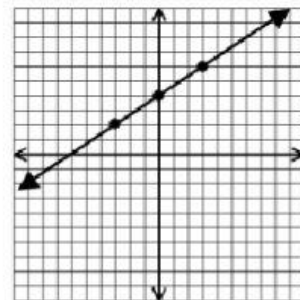
| x | y |
|-----|-----|
| -1 | -6 |
| 0 | -5 |
| 1 | -3 |
| 2 | 0 |
| 3 | 4 |

PROPORTION

| x | y |
|-----|-----|
| 1 | -3 |
| 2 | -6 |
| 3 | -9 |
| 4 | -12 |
| 5 | -15 |



NONPROPORTION



The entrance fee for Mountain World theme park is \$20. Visitors purchase additional \$2 tickets for rides, games, and food.

| x | y |
|-----|------|
| -1 | -1.5 |
| 1 | 1.5 |
| 3 | 4.5 |
| 5 | 7.5 |
| 7 | 10.5 |

WRITE EQUATIONS

DIRECTIONS: Fill in the boxes to write the equation from the given word problem, graph, or table.

Suppose that the water level of a river is 34 feet and that it is receding at a rate of 0.5 foot per day.

$$y = \text{---}x +$$

A canoe rental service charges a \$20 transportation fee and \$30 dollars an hour to rent a canoe.

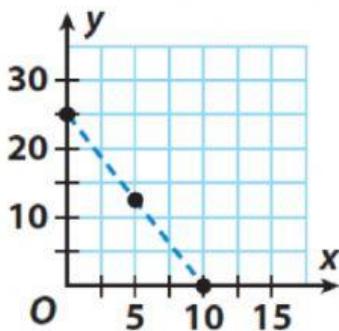
$$y = \text{---}x +$$

| X | Y |
|---|----|
| 0 | 3 |
| 1 | 7 |
| 2 | 11 |
| 3 | 15 |

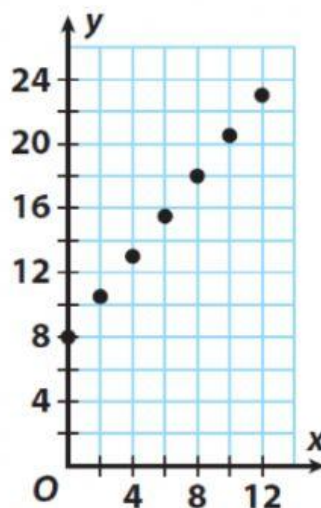
$$y = \text{---}x +$$

| x | y |
|----|----|
| -3 | 7 |
| -2 | 5 |
| -1 | 3 |
| 1 | -1 |

$$y = \text{---}x +$$



$$y = \text{---}x +$$



$$y = \text{---}x +$$