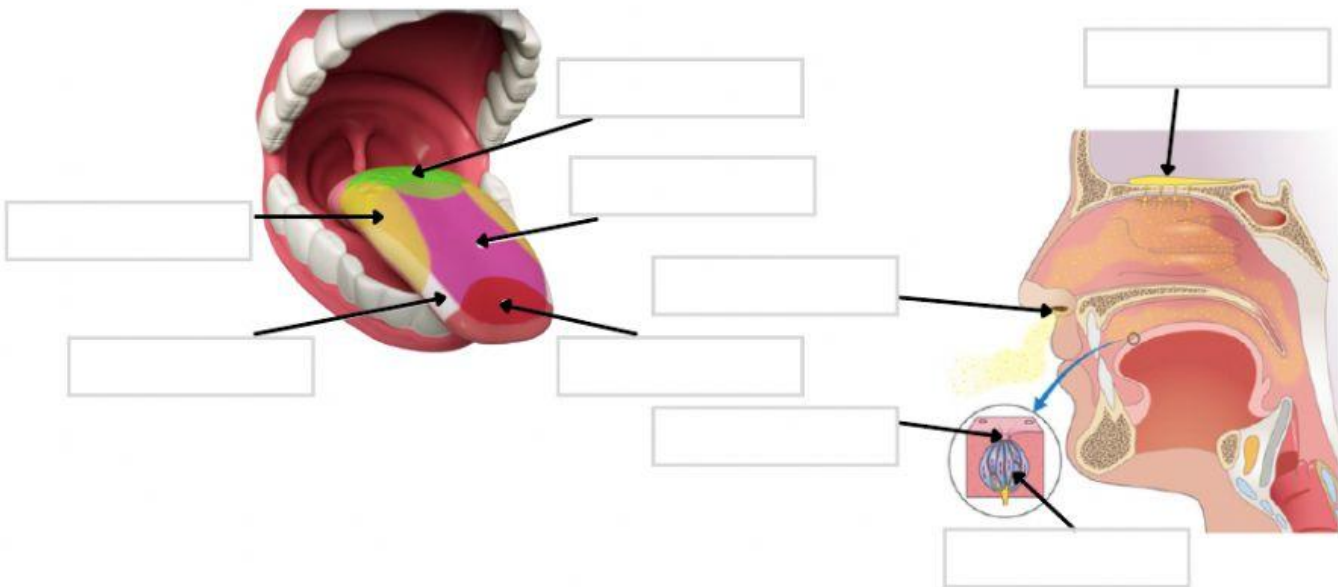


THE SENSES AND INFORMATION (2)

TASTE AND SMELL

- 1 Label the parts of the tongue and the nose, and the taste buds.

taste buds	bitter	sour	sweet	
umami	nerve receptors	salty	olfactory nerve	nostrils

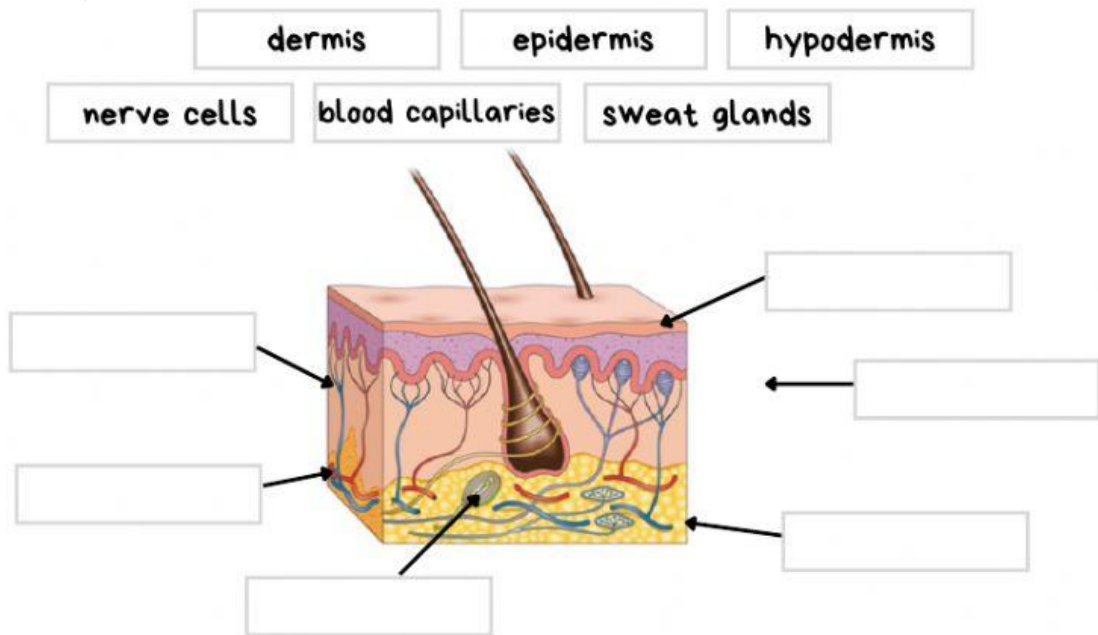


- 2 Join each part of the tongue and the nose with the correct function.

taste buds	It carries the information to the brain.
nostrils	They detect information.
nerve receptors	They collect information about tastes.
olfactory nerve	The air enters the nose through them.

TOUCH

3 Label the parts of the skin



4 Join each part with the correct function.

epidermis	regulates the body temperature
dermis	carry info (temperature, pain, textures) to the brain
nerve cells	protects from external factors (virus, bacteria...)
hypodermis	contains blood capillaries, nerve cells and sweat glands