

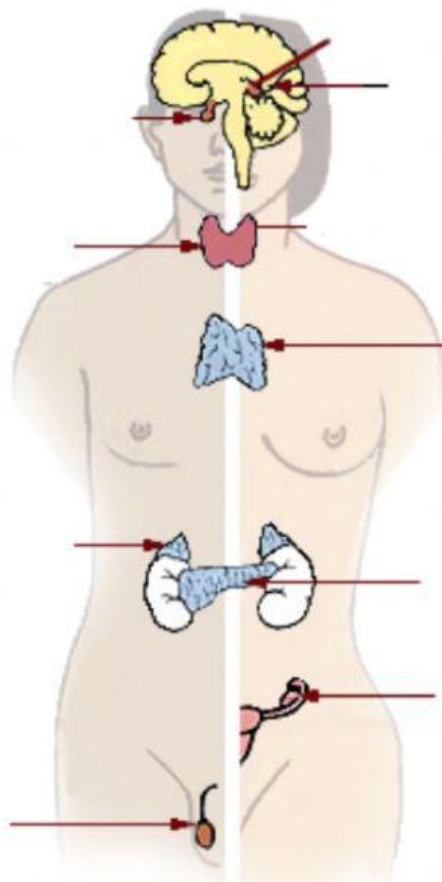
Endocrine System

Directions: Use your textbook p.896-901 and outside research to help you complete the Endocrine System study.

What is the Endocrine System?

On the human body below, label the major parts of the endocrine system:

Hypothalamus, pituitary gland, thymus, thyroid, parathyroid, adrenals, pancreas, ovaries (female), and testes (male)



Endocrine System (continued)

What is the function of the following major components of the endocrine system?

- **Hypothalamus**
- **Pituitary gland**
- **Thymus**
- **Thyroid**
- **Adrenals**
- **Pancreas**
- **Ovaries**
- **Testes**

Describe what hormones are and what they do

How does this system help maintain homeostasis in the body?

Name: _____

Biology (Spring)

LP 8, Day 7

Provide 2 examples of how this system works with other systems in the body.	
Example 1:	Example 2:
List 5 fun facts about this system.	Describe 2 diseases associated with this system.