

Evaluation Cycle 5 - Basica

1.- Look at the image and use the prepositions of place that are in the box to complete the sentences correctly (4pts). *Observa la imagen y usa las preposiciones de lugar que están en la caja para completar las oraciones correctamente (4pts).*



IN FRONT OF

IN

ON

BETWEEN

BEHIND

NEXT TO

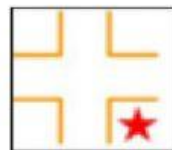
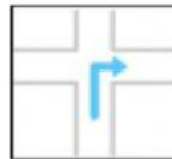
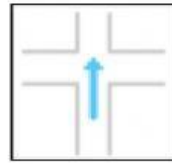
OVER

UNDER

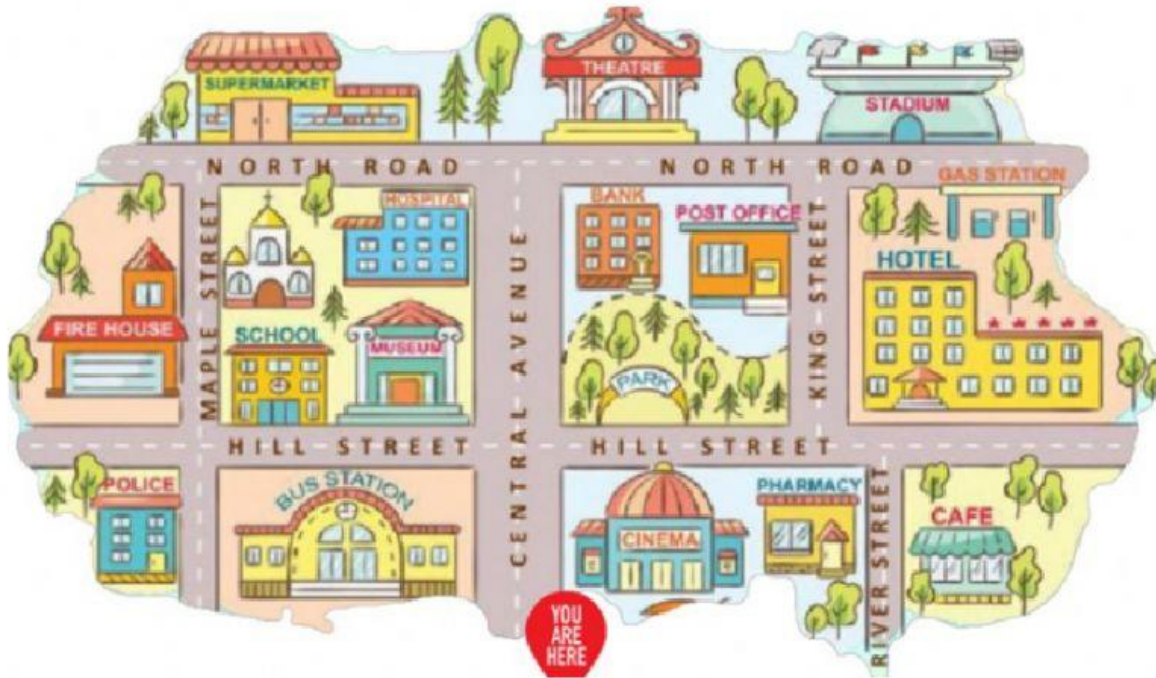
- 1.- The guitar is _____ the plant and the lamp.
- 2.- The window is _____ the sofa.
- 3.- The laptop is _____ the table.
- 4.- The dogs are _____ the sofa.
- 5.- The bird is flying _____ the tree.
- 6.- The rabbit and the plane are _____ the box.
- 7.- The bag is _____ the bag.
- 8.- The table is _____ the sofa.

2.- Drag and drop the image to their corresponding meaning (3pts). Arrastra y suelta la imagen a su significado correspondiente (3pts).

AT/ON THE CORNER OF	
GO STRAIGHT	
TURN LEFT	
TURN RIGHT	
ACROSS FROM / OPPOSITE	
GO PAST	



3.- Look at the map and select the correct answers for the following questions (start from the marked point in the map) 1.5pts. *Mira el mapa y selecciona las respuestas correctas para las siguientes preguntas (comienza desde el punto marcado en el mapa) 1.5pts.*



1.- How do I get to the park?

- A.- Go straight on Central Avenue, then turn right on Hill Street. The park is across from the cinema.
- B.- Go straight on Central Avenue, then turn right on North Road. The park is in front of the bank.
- C.- Go straight on Central Avenue, then turn left on Hill Street. The park is next to the museum.

2.- Can you tell me the way to the hospital?

- A. Go straight on Maple Street, go past the museum. The hospital is next to the church.
- B. Go straight on Central Avenue, go past the museum. The hospital is next to the church.
- C. Go straight on Central Avenue, go past the bank. The hospital is next to the post office.

3.- Can you show me the way to the theatre?

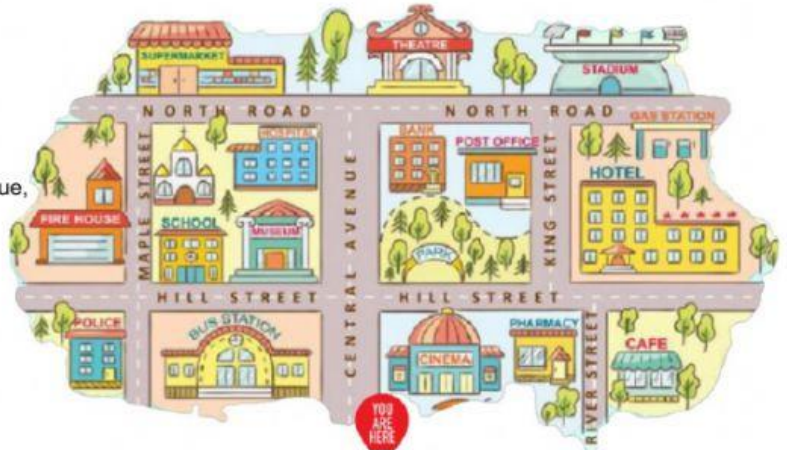
- A. Go straight on Central Avenue, go past the bank and then turn right on North Road. The theatre is between the stadium and the supermarket.
- B. Go straight on Central Avenue, go past the hospital and then turn left on North Road. The theatre is across from the supermarket.
- C. Go straight on Central Avenue, then turn right on Hill Street and go past the cinema. The theatre is on the corner of Hill Street and River Street.

4.- Read the following instructions and look at the map again then write the place where Anne wants to go (1.5pts). *Lee las siguientes instrucciones y mira el mapa de nuevo, luego escribe el lugar donde Anne quiere llegar (1.5pts)*

Anne: Hey Mark! I'm looking for... Could you help me?

Mark: Of course Anne. First, go straight on Central Avenue, then turn right on Hill Street and go past the park. It's on the corner of Hill Street and King Street.

Anne: Thank you!



The place where Anne wants to go is the _____