

## Health Science

### Skeletal System Test

**Instructions:** Circle the letter next to the correct answer. [10 points]

- Stephon fell out of a mango tree and broke his left collar bone. What is the scientific name for the bone that Barry broke?
  - Clavicle
  - Femur
  - Humerus
  - Radius
- In what part of the body would you find bones called carpals and meta-carpals?
  - The ankles and feet
  - The arms and legs
  - The fingers and toes
  - The wrists and hands
- What part of the skeleton protects the lungs?
  - Cranium
  - Mandible
  - Pelvis
  - Rib cage
- What kind of joint is found in the human skull?
  - Freely moveable joints
  - Immoveable joints
  - Slightly moveable joints
  - There are no joints in the skull
- Which chemicals are found in large amounts in human bones?
  - Carbon and iron
  - Fats and proteins
  - Phosphorous and calcium
  - Vitamins and carbohydrates
- What kind of tissue attaches bone to bone?
  - Cartilage
  - Ligaments
  - Muscles
  - Tendons
- What is the function of synovial fluid?
  - To cushion the fetus in the womb
  - To lubricate joints in the skeleton
  - To moisten the eyeball in the socket
  - To protect the brain in the cranium
- Devon was playing basketball and he sprained his ankle. Which structures in his ankle did he injure?
  - Bones
  - Ligaments
  - Muscles
  - Tendons
- Which statement below is correct?
  - The cranium is found between the shoulder and arm
  - The femur is the longest bone in the skeleton
  - The humerus protects the brain
  - The pelvis helps us to breathe in and out
- Which of these structures is connected by cartilage to the ribs?
  - Diaphragm
  - Epiglottis
  - Septum
  - Sternum

**Instructions:** In the spaces provided, write the common name for each bone. [10 points]

11. Femur \_\_\_\_\_

14. Sternum \_\_\_\_\_

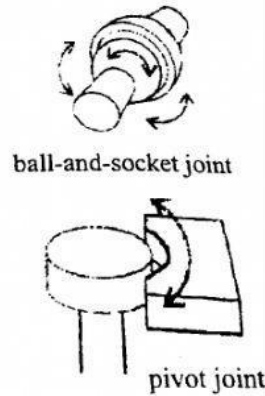
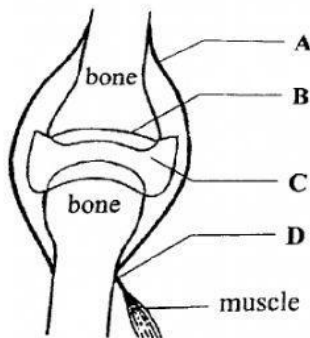
12. Patella \_\_\_\_\_

15. Cranium \_\_\_\_\_

13. Carpal \_\_\_\_\_

**Instructions:** Answer the following questions in the spaces provided. [10 points]

The diagram shows the joint found in the knee. The drawing show the rotation ability of two other types of joints found in the human body. Use the diagram to help you answer the questions that follow.



a. Which **LETTER** shows the part of the joint responsible for each of the following: [3]

- i. Lubricates the joint \_\_\_\_\_
- ii. Attaches muscles to the joint \_\_\_\_\_
- iii. Prevents friction between bones and absorbs shock \_\_\_\_\_

b. If a person is said to have a sprain, what part of the joint will be damaged? [1]

\_\_\_\_\_

c. Joints allow movement to occur. The drawings show two types of joints and the type of rotation or movement each allows. [3]

- i. Which joint allows for greater (most) movement? \_\_\_\_\_
- ii. Describe the types or range of movement allowed by each joint.  
 Ball-and-socket \_\_\_\_\_  
 Pivot \_\_\_\_\_

d. Where on the skeleton would you find an example of each type of joint? [2]

- i. Example of ball-and-socket joint \_\_\_\_\_
- ii. Example of pivot joint \_\_\_\_\_

e. Explain what a fracture is. [1]

\_\_\_\_\_